

Date: July 25, 2016 (Monday)
Time: 6:30 p.m.
Place: City Council Chambers
350 North Valencia Blvd.
Woodlake, CA 93286

In compliance with the Americans with Disabilities Act and the California Ralph M. Brown Act, if you need special assistance to participate in this meeting, including auxiliary aids, translation requests, or other accommodations, or to be able to access this agenda and documents in the agenda packet, please contact City Hall at 559-564-8055 at least 3 days prior to the meeting.

The full agenda including staff reports and supporting materials are available at City Hall.

I. CALL TO ORDER & WELCOME

II. PLEDGE OF ALLEGIANCE

III. PUBLIC COMMENTS

This portion of the meeting is reserved for persons wishing to address the Council on items within its jurisdiction but not on this agenda. NOTE: Prior to action by the Council on any item on this agenda, the public may comment on that item. Unscheduled comments may be limited to 3 minutes.

All items on the Consent Agenda are considered to be routine and non-controversial by City staff and will be approved by one motion if no member of the Council or public wishes to comment or ask questions. Items pulled from the Calendar will be considered separately.

IV. CONSENT CALENDAR –ACTION AND INFORMATION ITEMS

Request Approval of the Consent Calendar Action Items (IV. A-F)

- A. Action: Approval of Minutes of the regular meeting held on July 11, 2016 (Pages 1-20)
- B. Action: Approval of Warrants (Pages 21-44)
- C. Action: Adoption of Resolution: Continuation of the Proclamation of the Existence of a Local Drought Emergency for the City of Woodlake (Pages 45-49)
- D. Action: Adoption of Resolution: Reaffirm the Approval of Emergency Expenditures for the Development and Implementation of the City of Woodlake Well Project (Pages 50-53)
- E. Action: Adoption of Resolution: Approval of Right of Way Agreements, Grant Deeds, Temporary Construction Easement Deeds and Funds Disbursements for Those Properties Associated With the City of Woodlake South Valencia ADA Project (Pages 54-68)

- F. Action: Deny Claim for Damages from Sammy Medina Filed July 19, 2016
(Pages 69-71)

V. ACTION/DISCUSSION ITEMS

- A. Information: Recognition of Student Representative
- B. Action: Adoption of Resolution: Approval of the City Engineer's Reports for the Assessments at the Parkwood, Gentle Hills Estates, Olive Estates, Castle Rock Park, Olive Vista and Castle Rock Park Phase II Landscape and Lighting Districts
PUBLIC HEARING (Pages 72-121)
- C. Action: Adoption of Resolution: Approval of Variance 2016-01, Bredd Inc.
(Pages 122-126)
- D. Information: Nomination of a City of Woodlake Resident to Serve on the Measure R Citizens' Oversight Committee (Page 127)

VI. OTHER BUSINESS

- A. Information: Items from Staff
- B. Information: Items from Council Members
- C. Request from Council Members for Future Agenda Items

VII. CLOSED SESSION

- 1. **PENDING LITIGATION** (Government Code § 54956.9). It is the intention of this governing body to meet in closed-session concerning:
Conference with legal counsel – **EXISTING LITIGATION** (Government Code § 54956.9(d)(1)).
 - ☒ Parties, case/claim no. Sunset Waste
 - ☐ Case name unspecified because of jeopardy to settlement negotiations or service of process.
- 2. **PENDING LITIGATION** (Government Code § 54956.9). It is the intention of this governing body to meet in closed-session concerning:
Conference with legal counsel – **EXISTING LITIGATION** (Government Code § 54956.9(d)(1)).
 - ☒ Parties, case/claim no. Garibay vs. City of Woodlake
 - ☐ Case name unspecified because of jeopardy to settlement negotiations or service of process.

NOTICE TO THE PUBLIC

As provided in the Ralph M. Brown Act, Government Code sections 54950 et seq., the Governing Board may meet in closed session with members of its staff and its attorneys. These sessions are not open to the public and may not be attended by members of the public. The matters the Council will meet on in closed session are identified below or are those matters appropriately identified in open session as requiring immediate attention and arising after the posting of the agenda. Any public reports of action taken in the closed session will be made in accordance with Government Code sections 54957.1

“Documents: If distributed to the Council less than 72 hours before a regular meeting, any public records which are subject to public inspection and pertain to an open-session item on the regular meeting agenda shall be available at the following address at the time they are distributed to a majority of the Council: 350 North Valencia Boulevard, Woodlake, California 93286. Public records distributed to the Council at a public meeting will be available to the public at such meeting if they were prepared by the City.

Exemptions and details in Government Code§ 54957.5 (a) shall apply.”

II. ADJOURN

The next scheduled City Council meeting will be held on Monday, August 8, 2016 at 6:30 p.m. at City Council Chambers located at 350 North Valencia Boulevard, Woodlake, CA 93286.

City Council:

Rudy Mendoza - Mayor

Frances Ortiz - Vice Mayor

Louie Lopez - Councilmember

Greg Gonzalez Jr. - Councilmember

Jose L. Martinez - Councilmember

PRESENT: Councilmembers Mendoza, Martinez & Ortiz

OTHERS: Lara, Waters, Marquez, Diaz & Zacarias

ABSENT: Lopez & G. Gonzalez Jr.

FLAG SALUTE

PUBLIC COMMENT

Lino Moran, Woodlake – Mr. Moran thanked Council and everyone who helped purchase the flags for downtown. It looks beautiful. He asked how long flags will be displayed. City Administrator Lara stated normally flags will be displayed for every patriotic holiday and removed shortly after. The Woodlake Chamber of Commerce has asked if the flags could stay up throughout the upcoming weekend for the annual car show. City Administrator Lara stated yes.

City Administrator Lara introduced two new employees; Joaquin Bocanegra, our new building inspector and Gerardo Perez, maintenance worker. He also recognized two employees for their five years of service, Leticia Orozco, Account Clerk and Irene Zacarias, City Clerk.

Rita Razo, 100 E. Sierra, Woodlake – Ms. Razo stated she was concerned regarding the vandalism which had occurred at the parks and high school pool and wanted to know what our police department was doing about it and why the public never hears if anyone is ever caught. She suggested placing cameras in these locations. City Administrator Lara stated city staff is looking into the placement of cameras in some locations. Chief Marquez stated one reason the public may not hear about the outcomes of these situations is because the investigation is ongoing and also, if they are minors information cannot be released. Ms. Razo is also happy to see the flags downtown and thanked everyone involved in the project.

Rudy Garcia, 154 Pepper, Woodlake – Mr. Garcia stated the flags look beautiful downtown and thanked city staff to allow them to remain up for the car show which will take place this weekend.

IV. CONSENT CALENDAR –ACTION AND INFORMATION ITEMS

Request Approval of the Consent Calendar Action Items (IV. A-D)

- A. Action: Approval of Minutes of the regular meeting held on June 27, 2016
- B. Action: Approval of Warrants
- C. Action: Adoption of Resolution: Approval of the June 2016 Monthly Report of Investments
- D. Action: Proclamation from the City of Woodlake, Proclaiming August 7-13, 2016 as International Assistance Dog Week

ON A MOTION BY ORTIZ, SECOND BY MARTINEZ, IT WAS VOTED TO APPROVE THE CONSENT CALENDER. APPROVED UNANIMOUSLY.

V. ACTION/DISCUSSION ITEMS

A. Information: Presentation by LAFCO

See attached PowerPoint presentation by Ben Guliani

B. Action: Adoption of Resolution: Authorization to submit an Application, Accept the Allocation of Funds, and Execution of a Grant Agreement with the California Department of Transportation for an Airport Improvement Program (AIP) Matching Grant

City Employee Waters reported the following: the Federal Aviation Administration has grant funding available for airport planning and maintenance projects. The City of Woodlake must apply for these funds each year in order to receive the funding. The California Department of Transportation can provide a 5% grant for the match portion of the grant. The City of Woodlake would like to request permission from Council to apply for grant funding from the California Department of Transportation for a 5% grant to assist in covering the required match for the FAA AIP grant.

ON A MOTION BY ORTIZ, SECOND BY MARTINEZ IT WAS VOTED TO APPROVE THE RESOLUTION AND AUTHORIZE THE SUBMITTAL OF AN APPLICATION AND ACCEPTANCE OF THE ALLOCATION OF FUNDS FOR THE AIRPORT IMPROVEMENT PROGRAM. APPROVED UNANIMOUSLY.

C. Action: Adoption of Resolution: Approval of Exemption for the City of Woodlake Airport Layout Plan Update

City Employee Waters reported the following: the City of Woodlake has FAA funding available which will be spent on updating the Woodlake Airport Layout Plan. After review of the Woodlake Airport Layout Plan Update project it has been determined by City staff that the project qualifies for a Categorical Exemption under the California Environmental Quality Act (CEQA).

ON A MOTION BY MARTINEZ, SECOND BY ORTIZ IT WAS VOTED TO ADOPT THE RESOLUTION AND APPROVE THE EXEMPTION FOR THE CITY OF WOODLAKE AIRPORT LAYOUT PLAN UPDATE. APPROVED UNANIMOUSLY.

D. Action: Adoption of Resolution: Approval of Exemption for the City of Woodlake Airport Pavement Maintenance and Management Program

City Employee Waters reported the following: the City of Woodlake has FAA funding available which will be spent on updating the Woodlake Airport Layout Plan. After review of the Woodlake Airport Layout Plan Update project it has been determined by City staff that the project qualifies for a Categorical Exemption under the California Environmental Quality Act (CEQA).

ON A MOTION BY ORTIZ, SECOND BY MARTINEZ IT WAS VOTED TO ADOPT THE RESOLUTION AND APPROVE THE EXEMPTION FOR THE CITY OF WOODLAKE AIRPORT PAVEMENT MAINTENANE AND MANAGEMENT PROGRAM. APPROVED UNANIMOUSLY.

E. Action: Adoption of Resolution: Approval of the City Engineer's Reports for the Assessments at the Parkwood, Gentle Hills Estates, Olive Estates, Castle Rock Park, Olive Vista and Castle Rock Park Phase II Landscape and Lighting Districts and Set July 25, 2016, for a Public Hearing to set the Rates for Each District

City Administrator Lara reported the following: annually, as part of the Landscape and Lighting Act of 1972, Council sets a public hearing date for those wishing to comment on any of the individual assessment districts in the City of Woodlake. This year that date will be set as July 25, 2016. All assessment district property owners have been notified of the public hearing date and location. Prior to any action by the City Council, the City Engineer develops an engineer's report that breaks down the costs necessary to maintain each assessment district. Reports have been developed for the following districts: Parkwood, Gentle Hills, Olive Estates, Castle Rock Park, Olive Vista and Castle Rock Park Phase II. The costs have not changed from the previous year. The assessment allows for maintenance of grounds and lights plus incidental costs such as administration and engineering. Districts are maintained by City staff. A majority of the expenditures go towards basic maintenance. Currently, staff is revamping the sprinkler systems and will replant shrubs and trees as necessary in all the districts.

ON A MOTION BY ORTIZ, SECOND BY MARTINEZ IT WAS VOTED TO ADOPT THE RESOLUTION AND APPROVE THE CITY ENGINEER'S REPORT FOR THE ASSESSMENTS. APPROVED UNANIMOUSLY.

VI. OTHER BUSINESS

A. Information: Items from Staff

City Employee Waters – Reported large meters are being installed this week. Also, some of the residents that received the pink water leak notice have actually called city staff to try and resolve the problem. Councilmember Martinez asked if residents can call in to city hall and found out what their current water usage is. City Administrator Lara stated yes.

City Administrator Lara – Reported the landscaping around the roundabout is going well. Painting will begin at the plaza tomorrow. Self-Help will soon begin construction on the Valencia Heights project.

Delta Vector Representative Belen Gomez – Ms. Gomez reported the West Nile virus has been detected in Tulare County, although it is not a problem in our city. The cities of Visalia, Exeter and Dinuba are the ones more at risk.

B. Information: Items from Council

Councilmember Ortiz – Reported she has been asked by a local political group to assist in voter registration and asked City Attorney Diaz if there would be any conflict. City Attorney Diaz asked Councilmember Ortiz to send him the information so that he may review the information.

Councilmember Martinez – Asked if city staff could find out who would be interested in painting the addresses on the curbs throughout Woodlake. City Administrator Lara stated staff will research and report to council at the next council meeting.

C. Request from Council Members for Future Agenda Items

VII. CLOSED SESSION

1. **PENDING LITIGATION** (Government Code § 54956.9). It is the intention of this governing body to meet in closed-session concerning:

Conference with legal counsel – **EXISTING LITIGATION** (Government Code § 54956.9(d)(1)).

☒ Parties, case/claim no. Sunset Waste

☐ Case name unspecified because of jeopardy to settlement negotiations or service of process.

2. **PENDING LITIGATION** (Government Code § 54956.9). It is the intention of this governing body to meet in closed-session concerning:

Conference with legal counsel – **EXISTING LITIGATION** (Government Code § 54956.9(d) (1)).

- ☒ Parties, case/claim no. Garibay vs. City of Woodlake
☐ Case name unspecified because of jeopardy to settlement negotiations or service of process.

MEETING MOVED TO CLOSED SESSION AT 7:18 PM

MEETING RECONVENED AT 7:39 PM

Mayor Mendoza stated no action was taken and there is nothing to report.

NOTICE TO THE PUBLIC

As provided in the Ralph M. Brown Act, Government Code sections 54950 et seq., the Governing Board may meet in closed session with members of its staff and its attorneys. These sessions are not open to the public and may not be attended by members of the public. The matters the Council will meet on in closed session are identified below or are those matters appropriately identified in open session as requiring immediate attention and arising after the posting of the agenda. Any public reports of action taken in the closed session will be made in accordance with Government Code sections 54957.1

“Documents: If distributed to the Council less than 72 hours before a regular meeting, any public records which are subject to public inspection and pertain to an open-session item on the regular meeting agenda shall be available at the following address at the time they are distributed to a majority of the Council: 350 North Valencia Boulevard, Woodlake, California 93286. Public records distributed to the Council at a public meeting will be available to the public at such meeting if they were prepared by the City. Exemptions and details in Government Code § 54957.5 (a) shall apply.”

VIII. ADJOURN

The next scheduled City Council meeting will be held on Monday, July 25, 2016 at 6:30 p.m. at City Council Chambers located at 350 North Valencia Boulevard, Woodlake, CA 93286.

City Council:

Rudy Mendoza - Mayor

Frances Ortiz - Vice Mayor

Louie Lopez - Councilmember

Greg Gonzalez Jr. - Councilmember

Jose L. Martinez - Councilmember

Meeting adjourned at 7:39 PM

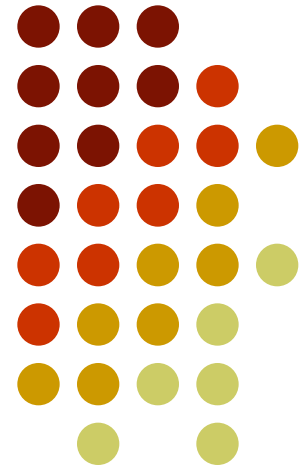
Submitted by,

Irene Zacarias
City Clerk

Municipal Service Reviews

Helping to Shape
Local Agency Growth

City of Woodlake, 7/11/16



Purpose of Presentation



- To inform and receive feedback from the City Council and the public regarding the Municipal Service Review (MSR) and Sphere of Influence (SOI) update process for the City of Exeter
- Your comments will assist LAFCO to create an MSR that will help:
 - orderly growth,
 - protect the region's resources,
 - efficient service delivery,
 - and address access of basic services to previously underserved territories.



What is LAFCO?

- No, its not a comedy club
- LAFCO = Local Agency Formation Commission
- LAFCO is an independent agency charged with promoting orderly growth, discouraging urban sprawl, preserving natural resources, and ensuring efficient governmental services.
- Each County is required to have a Local Agency Formation Commission.



What does LAFCO do?

The Commission reviews and approves or disapproves:

- Annexations (expansion of boundaries) and Detachments (reduction of boundaries)
- City Incorporations and Special District Formations
- Consolidations and Mergers of cities and/or special districts
- Municipal Service Reviews
- Spheres of Influence



Who is on LAFCO?

Our Commission Members:

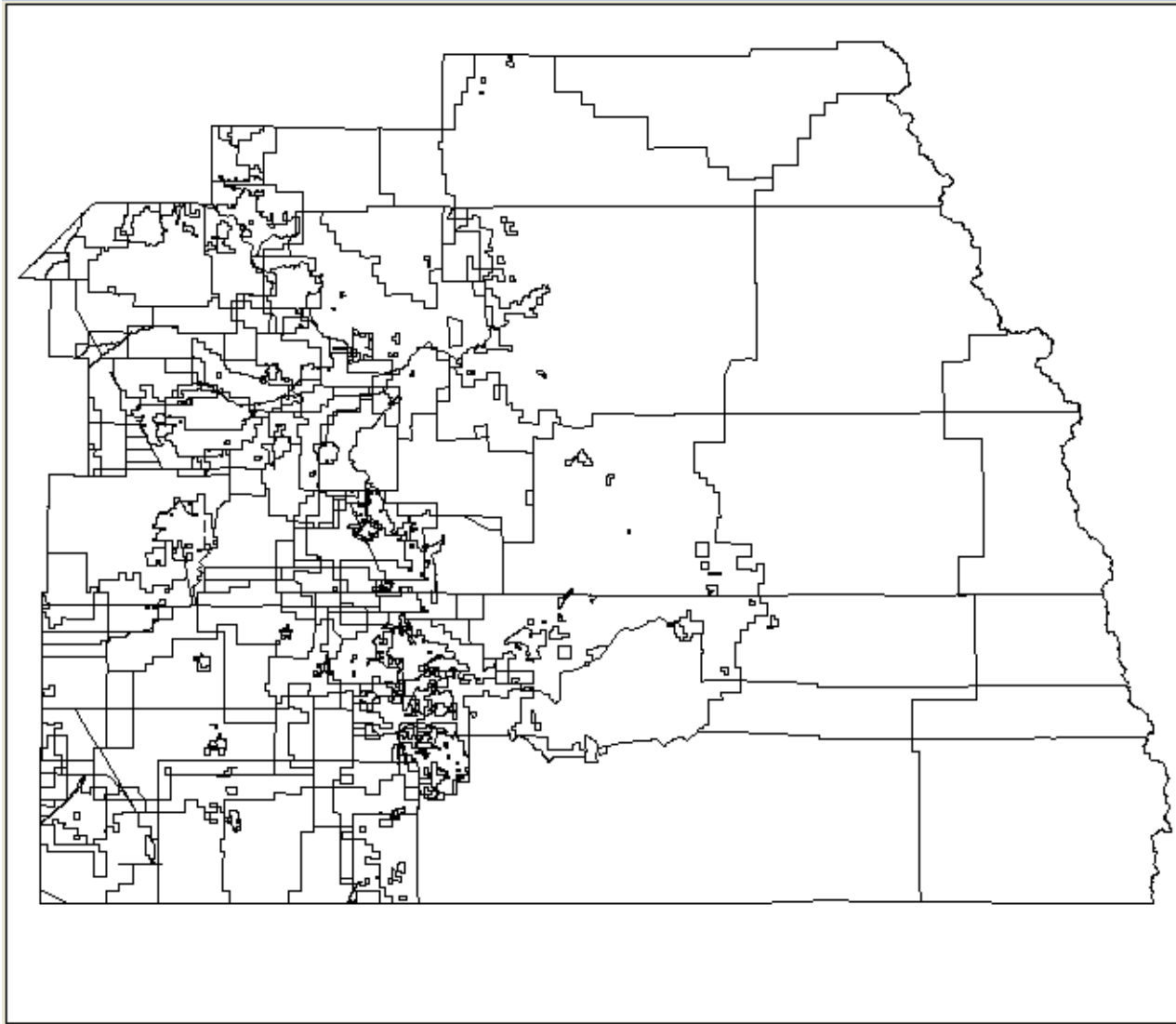
- County – Steve Worthley, Allen Ishida
- City – Cam Hamilton, Rudy Mendoza
- Public – Julie Allen
- Alternates – Pete Vander Poel, Craig Vejvoda,
Dennis Mederos

Our County



- 8 Incorporated Cities
- 94 Special Districts
 - Includes Irrigation, Community Services, Public Utility, Memorial, Cemetery, Hospital, etc.
 - Does not include School Districts, Air Districts and Financing Districts such as landscape and lighting districts

Boundaries





MSR Purpose

- A Municipal Service Review (MSR) serves as the analytical basis used to develop the Sphere of Influence SOI for a city or special district.
- An MSR must be prepared at the time or prior to consideration of a SOI Amendment or Update.

MSR Contents



An MSR must contain written determinations with respect to seven factors:

1. Growth and population projections for the affected area
2. The location and characteristics of any disadvantaged unincorporated communities within or contiguous to the SOI
3. Present and planned capacity of public facilities and adequacy of public services, including infrastructure needs and deficiencies
4. Financial ability of agency to provide service
5. Status of, and opportunities for, shared facilities
6. Accountability for community service needs, including governmental structure and operational efficiencies.
7. Any other matter related to effective or efficient service delivery, as required by Commission policy.



MSR Process

- Collection of data from the City and other agencies.
- Organize the data collected into one of the 7 factors.
- Look at data in totality for each factor and make determinations.
- Focus on efficiency, quality and long-term viability.



Services Subject to Review

- Police Protection
- Fire Protection
- Water and Wastewater
- Solid Waste Collection and Disposal
- Streets and Traffic Circulation
- Power Generation and Distribution
- Health Care

SOI Purpose



- LAFCO is charged with ensuring and enforcing orderly and logical growth and uses SOIs (Spheres of Influence) to do this.
- A SOI is LAFCO's determination of the probable growth and future physical boundary and service area of a local agency over a 20-year period.
- A SOI guides growth because a City or District can only annex land that is within the established SOI and adjacent to the city's boundaries.
- An established SOI can be amended; however, approval of an SOI amendment must undergo a detailed analysis (with a focus on why a deviation from the established SOI is necessary) and should only be approved in extraordinary situations.

SOI Determinations



In determining the SOI, the Commission must prepare a written statement of determinations with respect to the following:

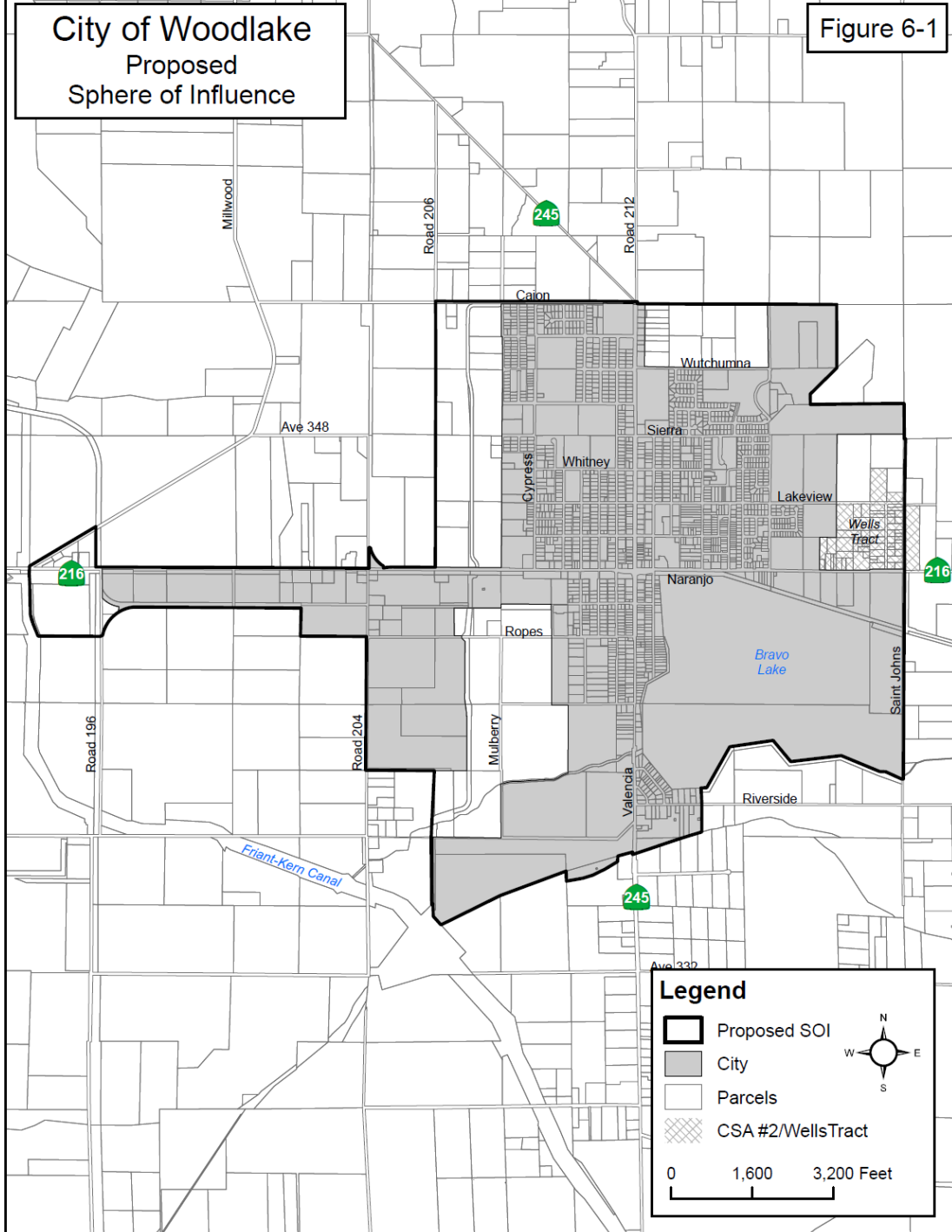
- Present & planned land uses within area, including ag & open-space
- Present & probable need for public facilities & services in the area
- Present capacity of public facilities and adequacy of public services that the agency is provides
- The existence of any social or economic communities of interest in the area if the Commission determines they are relevant to the agency
- The present & probable need for sewer, water and fire services for disadvantaged unincorporated communities within the SOI

City of Woodlake Proposed Sphere of Influence

Figure 6-1



The proposed SOI matches
The existing City UDB





Providing Comments

- The Draft Woodlake MSR has been placed on the Tulare LAFCO website for public review with Commission action anticipated for the August 3rd meeting
- Written comments to LAFCO at 210 N. Church St, Visalia, CA. 93274
- Email comments to: bgiuliani@tularecog.org or singoldsby@tularecog.org
- You can find more information on our webpage www.co.tulare.ca.us/lafco/ or call us at 623-0450

Questions?



City of Woodlake
Summary of Disbursements and Payroll
City Council Meeting : July 25, 2016

PAYROLL

| | |
|------------------|-------------|
| 6/24/2016 (City) | \$47,576.87 |
| 6/24/2016 (Fire) | \$4,771.49 |

| | |
|----------------------|--------------------|
| Gross Payroll | \$52,348.36 |
|----------------------|--------------------|

DISBURSMENTS / WARRANTS

| | |
|--------------------|--------------|
| 7/20/2016 FY 15/16 | \$198,640.59 |
| 7/20/2016 FY 16/17 | \$56,576.59 |

| | |
|----------------------------|---------------------|
| Total Disbursements | \$255,217.18 |
|----------------------------|---------------------|

WIRES

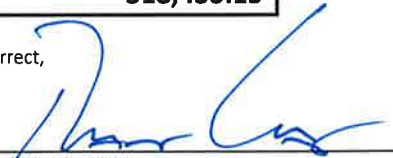
| | | | |
|------------------|------|----|----------|
| PAYROLL TAX WIRE | CITY | \$ | 9,429.30 |
| | FIRE | \$ | 1,438.31 |

USDA - Water Loan
USDA - Sewer Loan
USDA - Airport Loan
USDA - Fire Truck Loan

| | | |
|-----------------------------------|-----------|------------------|
| Total Wire Amount Sent Out | \$ | 10,867.61 |
|-----------------------------------|-----------|------------------|

| | | |
|------------------------------|-----------|-------------------|
| Amount to be Approved | \$ | 318,433.15 |
|------------------------------|-----------|-------------------|

I, Ramon Lara, certify under penalty of perjury that the above listed accounts are correct,
due and payable to the best of my knowledge.



City Administrator, Ramon Lara

Passed and adopted at a regular meeting of the City Council of the
City of Woodlake on the 25th day of July 2016.
by the following vote:

Ayes:
Noes:
Absent:
Abstain:

Mayor, Rudy Mendoza

City Clerk, Irene Zacarias

PERIOD 2 DATING 6/05/2016- 6/18/2016 CHECK DATE 6/24/2016
DIRECT DEPOSIT IS TURNED ON

| CHECK NUMBER | CHECK AMOUNT | CODE | CHECK SEQ |
|-----------------|-----------------|------|--------------|
| 21790 | 3,675.06 | 208 | 1 STUB ONLY |
| 21791 | 1,918.90 | 210 | 1 STUB ONLY |
| 21792 | 1,008.65 | 206 | 1 STUB ONLY |
| 21793 | 2,101.77 | 212 | 1 STUB ONLY |
| 21794 | 1,735.75 | 207 | 1 STUB ONLY |
| 21795 | 1,237.88 | 173 | 1 STUB ONLY |
| 21796 | 2,510.33 | 511 | 1 STUB ONLY |
| 21797 | 1,862.63 | 556 | 1 STUB ONLY |
| 21798 | 2,667.08 | 539 | 1 STUB ONLY |
| 21799 | 1,546.20 | 561 | 1 STUB ONLY |
| 21800 | 414.65 | 560 | 1 STUB ONLY |
| 21801 | 1,708.94 | 557 | 1 STUB ONLY |
| 21802 | 2,578.70 | 549 | 1 STUB ONLY |
| 21803 | 1,832.25 | 554 | 1 STUB ONLY |
| 21804 | 3,386.57 | 552 | 1 STUB ONLY |
| 21805 | 1,004.14 | 555 | 1 STUB ONLY |
| 21806 | 1,673.13 | 553 | 1 STUB ONLY |
| 21807 | 1,701.43 | 551 | 1 STUB ONLY |
| 21808 | 1,398.22 | 107 | 1 STUB ONLY |
| 21809 | 633.67 | 213 | 1 STUB ONLY |
| 21810 | 1,380.85 | 134 | 1 STUB ONLY |
| 21811 | 1,154.14 | 205 | 1 STUB ONLY |
| 21812 | 1,342.09 | 187 | 1 STUB ONLY |
| 21813 | 1,164.45 | 159 | 1 STUB ONLY |
| 21814 | 2,043.49 | 209 | 1 STUB ONLY |
| 21815 | 1,943.66 | 211 | 1 STUB ONLY |
| 21816 | 607.49 | 214 | 1 STUB ONLY |
| 21817 | 1,344.75 | 188 | 1 STUB ONLY |

.

PERIOD 2 DATING 6/05/2016- 6/18/2016 CHECK DATE 6/24/2016

| EMPLOYER CODE | FUND CODE | HOME TOTALS | WORKED TOTALS | WORKED DIR DEP |
|------------------|--------------|----------------|------------------|-------------------|
|------------------|--------------|----------------|------------------|-------------------|

GRAND TOTALS

| NEGOTIABLE CHECKS | | COUNTS |
|-------------------|---------------------------|--------|
| 0.00 | *EMPLOYEE CHECKS | 0 |
| 0.00 | *VENDOR CHECKS | 0 |
| 0.00 | *BANK CHECKS | 0 |
| 0.00 | **TOTAL NEGOTIABLE CHECKS | 0 |

OTHER CHECKS

| | | |
|------|-------------------|---|
| 0.00 | *MANUAL CHECKS | 0 |
| 0.00 | *CANCELLED CHECKS | 0 |
| 0.00 | ***GRAND TOTAL | |

NON-NEGOTIABLE CHECKS

| | | |
|-----------|-----------------------|----|
| 47,576.87 | *DIRECT DEPOSIT STUBS | 28 |
| 0.00 | *VENDOR DIR DEP STUBS | 0 |

| | | |
|-----------|-------------------------------|----|
| 47,576.87 | **TOTAL NON-NEGOTIABLE CHECKS | 28 |
|-----------|-------------------------------|----|

NEGOTIABLE CHECKS/NON-NEGOTIABLE CHECKS

| | | |
|-----------|-----------------------|----|
| 0.00 | *EMPLOYEE CHECKS | 0 |
| 0.00 | *VENDOR CHECKS | 0 |
| 0.00 | *BANK CHECKS | 0 |
| 47,576.87 | *DIRECT DEPOSIT STUBS | 28 |
| 0.00 | *VENDOR DIR DEP STUBS | 0 |

| | | |
|-----------|---------------------------------|----|
| 47,576.87 | ***TOTAL NEGOTIABLE & NON-NEGOT | 28 |
|-----------|---------------------------------|----|

| | | |
|------|---------------|---|
| 0.00 | *OTHER CHECKS | 0 |
|------|---------------|---|

| | | |
|-----------|-------------------------------------|--|
| 47,576.87 | ***TOTAL NEG, NON-NEG, OTHER CHECKS | |
|-----------|-------------------------------------|--|

| | |
|---------------------|---|
| TOTAL SEQ 1 FEMALES | 6 |
|---------------------|---|

| EMP # | CUR AMT | CUR HRS |
|------------------|----------|---------|
| 159 | 33.04 | 1.17 |
| 539 | 1,038.81 | 20.00 |
| 561 | 420.00 | 14.00 |
| 557 | 313.10 | 10.00 |
| 554 | 381.66 | 11.50 |
| 552 | 1,593.00 | 48.00 |
| 553 | 497.81 | 15.00 |
| 187 | 42.65 | 1.50 |
| 551 | 796.50 | 24.00 |
| 9 EMPLOYEES | 5,116.57 | 145.17 |
| PAGE TOTALS *** | 5,116.57 | 145.17 |
| FEATURE TOTALS * | | |

| EMP # | CUR AMT | CUR HRS |
|------------------|--------------|----------|
| 511 | 3,435.92 | 80.00 |
| 213 | 756.00 | 63.00 |
| 556 | 2,779.08 | 80.00 |
| 214 | 1,826.39 | 80.00 |
| 159 | 1,539.04 | 81.17 |
| 539 | 4,308.96 | 100.00 |
| 188 | 2,023.47 | 80.00 |
| 561 | 2,020.00 | 94.00 |
| 209 | 2,474.39 | 80.00 |
| 560 | 474.09 | 32.00 |
| 557 | 2,399.61 | 90.00 |
| 208 | 5,211.85 | 80.00 |
| 173 | 1,692.00 | 80.00 |
| 549 | 3,920.77 | 80.00 |
| 554 | 2,651.66 | 91.50 |
| 210 | 2,669.08 | 80.00 |
| 211 | 2,449.40 | 80.00 |
| 206 | 1,444.62 | 80.00 |
| 205 | 1,516.62 | 80.00 |
| 552 | 4,163.00 | 128.00 |
| 555 | 1,306.62 | 80.00 |
| 134 | 2,029.08 | 80.00 |
| 553 | 2,419.27 | 95.00 |
| 107 | 2,166.18 | 81.50 |
| 212 | 2,718.45 | 80.00 |
| 187 | 1,709.26 | 81.50 |
| 207 | 2,657.08 | 80.00 |
| 551 | 3,066.50 | 104.00 |
| | 67,828.39 | 2,321.67 |
| PAGE TOTALS *** | | |
| | 28 EMPLOYEES | |
| FEATURE TOTALS * | 67,828.39 | 2,321.67 |
| | 28 EMPLOYEES | |

PERIOD 2 DATING 6/05/2016- 6/18/2016 CHECK DATE 6/24/2016
DIRECT DEPOSIT IS TURNED ON

| CHECK NUMBER | CHECK AMOUNT | CODE | CHECK SEQ |
|-----------------|-----------------|------|--------------|
| 21818 | 221.64 | 4033 | 1 STUB ONLY |
| 21819 | 206.29 | 4036 | 1 STUB ONLY |
| 21820 | 1,546.40 | 4018 | 1 STUB ONLY |
| 21821 | 1,568.54 | 4022 | 1 STUB ONLY |
| 21822 | 1,228.62 | 4035 | 1 STUB ONLY |

TOTALS FOR CHECK FORM: STUB

| NEGOTIABLE CHECKS | COUNTS |
|--------------------------------|--------|
| 0.00 *EMPLOYEE CHECKS | 0 |
| 0.00 *VENDOR CHECKS | 0 |
| 0.00 *BANK CHECKS | 0 |
| 0.00 **TOTAL NEGOTIABLE CHECKS | 0 |

OTHER CHECKS

| | |
|-----------------------------|---|
| 0.00 *MANUAL CHECKS | 0 |
| 0.00 *CANCELLED CHECKS | 0 |
| 0.00 **TOTAL FOR CHECK FORM | |

NON-NEGOTIABLE CHECKS

| | |
|--------------------------------|---|
| 4,771.49 *DIRECT DEPOSIT STUBS | 5 |
| 0.00 *VENDOR DIR DEP STUBS | 0 |

PERIOD 2 DATING 6/05/2016- 6/18/2016 CHECK DATE 6/24/2016

| EMPLOYER CODE | FUND CODE | HOME TOTALS | WORKED TOTALS | WORKED DIR DEP |
|------------------|--------------|----------------|------------------|-------------------|
|------------------|--------------|----------------|------------------|-------------------|

GRAND TOTALS

| NEGOTIABLE CHECKS | | COUNTS |
|-------------------|---------------------------|--------|
| 0.00 | *EMPLOYEE CHECKS | 0 |
| 0.00 | *VENDOR CHECKS | 0 |
| 0.00 | *BANK CHECKS | 0 |
| 0.00 | **TOTAL NEGOTIABLE CHECKS | 0 |

OTHER CHECKS

| | | |
|------|-------------------|---|
| 0.00 | *MANUAL CHECKS | 0 |
| 0.00 | *CANCELLED CHECKS | 0 |
| 0.00 | ***GRAND TOTAL | |

NON-NEGOTIABLE CHECKS

| | | |
|----------|-------------------------------|---|
| 4,771.49 | *DIRECT DEPOSIT STUBS | 5 |
| 0.00 | *VENDOR DIR DEP STUBS | 0 |
| 4,771.49 | **TOTAL NON-NEGOTIABLE CHECKS | 5 |

NEGOTIABLE CHECKS/NON-NEGOTIABLE CHECKS

| | | |
|----------|-----------------------|---|
| 0.00 | *EMPLOYEE CHECKS | 0 |
| 0.00 | *VENDOR CHECKS | 0 |
| 0.00 | *BANK CHECKS | 0 |
| 4,771.49 | *DIRECT DEPOSIT STUBS | 5 |
| 0.00 | *VENDOR DIR DEP STUBS | 0 |

| | | |
|----------|---------------------------------|---|
| 4,771.49 | ***TOTAL NEGOTIABLE & NON-NEGOT | 5 |
|----------|---------------------------------|---|

| | | |
|----------|-------------------------------------|---|
| 0.00 | *OTHER CHECKS | 0 |
| 4,771.49 | ***TOTAL NEG, NON-NEG, OTHER CHECKS | |

| | |
|---------------------|---|
| TOTAL SEQ 1 FEMALES | 0 |
|---------------------|---|

| EMP # | CUR AMT | CUR HRS |
|------------------|----------|---------|
| 4033 | 240.00 | 24.00 |
| 4036 | 240.00 | 24.00 |
| 4018 | 1,983.92 | 80.00 |
| 4022 | 1,864.13 | 144.00 |
| 4035 | 1,650.94 | 144.00 |
| 5 EMPLOYEES | 5,978.99 | 416.00 |
| PAGE TOTALS *** | | |
| FEATURE TOTALS * | 5,978.99 | 416.00 |

OLD FY 15/16

ACS FINANCIAL SYSTEM 07/20/2016 16: Check Register GL540R-V08.03 PAGE 1 CITY OF WOODLAKE

| BANK | VENDOR | CHECK# | DATE | AMOUNT |
|----------------------|--------------------------|--------|----------|------------|
| BANK BANK OF VISALIA | | | | |
| 001244 | VOYAGER FLEET SYSTEMS IN | 62133 | 07/14/16 | 8,249.51 |
| 001351 | A-C ELECTRIC COMPANY | 62135 | 07/22/16 | 230.00 |
| 000944 | AMERIPRIDE UNIFORM SERVI | 62136 | 07/22/16 | 446.88 |
| 001212 | AT&T | 62137 | 07/22/16 | 20.51 |
| 001310 | AT&T (INTERNET) | 62138 | 07/22/16 | 65.81 |
| 000334 | BANK OF AMERICA | 62139 | 07/22/16 | 5,993.87 |
| 001296 | BERNARD PROFESSIONAL T.S | 62140 | 07/22/16 | 1,157.50 |
| 000351 | BSK ASSOCIATES | 62141 | 07/22/16 | 5,869.00 |
| 000124 | COLLINS & SCHOETTLER | 62142 | 07/22/16 | 1,200.00 |
| 000753 | DEPARTMENT OF JUSTICE | 62143 | 07/22/16 | 175.00 |
| 000283 | FRUIT GROWERS SUPPLY CO. | 62144 | 07/22/16 | 1,510.68 |
| 000025 | GAS COMPANY/THE | 62145 | 07/22/16 | 137.45 |
| 001343 | HEALTH WISE SERVICES | 62146 | 07/22/16 | 150.00 |
| 001010 | LOUIE'S AUTO PARTS | 62147 | 07/22/16 | 755.26 |
| 001340 | MCMILLAN, JEREMY | 62148 | 07/22/16 | 47.95 |
| 001362 | MIDVALLEY DISPOSAL | 62149 | 07/22/16 | 44,357.69 |
| 001154 | PORTERVILLE/ CITY OF | 62150 | 07/22/16 | 980.00 |
| 001087 | PROTECTION ONE | 62151 | 07/22/16 | 52.48 |
| 000023 | SELF HELP ENTERPRISES IN | 62152 | 07/22/16 | 93,749.32 |
| 000024 | SOUTHERN CALIF EDISON CO | 62153 | 07/22/16 | 579.03 |
| 001158 | TULARE REGIONAL MEDICAL | 62154 | 07/22/16 | 1,183.00 |
| 000141 | VALLEY IND & FAM MED GRP | 62155 | 07/22/16 | 350.00 |
| 001322 | VSCE INC. | 62156 | 07/22/16 | 25,502.58 |
| 000897 | WILLITTS EQUIPMENT CO., | 62157 | 07/22/16 | 4,506.13 |
| 000027 | WOODLAKE GROWERS SUPPLY | 62158 | 07/22/16 | 215.94 |
| 000083 | WOODLAKE/CITY OF | 62159 | 07/22/16 | 1,155.00 |
| BANK OF VISALIA | | | | 198,640.59 |
| | | | | *** |

ACS FINANCIAL SYSTEM
07/20/2016 16:

BANK VENDOR

REPORT TOTALS:

Check Register GL540R-V08.03 PAGE 2 CITY OF WOODLAKE

CHECK# DATE AMOUNT

198,640.59

RECORDS PRINTED 000117

Schedule of Bills

| VENDOR NAME DESCRIPTION | AMOUNT | ACCOUNT NAME | FUND & ACCOUNT | CLAIM INVOICE | PO# | F/P ID LINE |
|--|----------|--------------------------|------------------|---------------|-----|-------------|
| A-C ELECTRIC COMPANY TRB SHOOT MTR 06/2016 | 230.00 | SPECIAL DEPARTMENT EXPEN | 062.0462.060.029 | 34814 | | 008 00046 |
| AMERIPRIDE UNIFORM SERVI UNIFORM SERV 06/2016 | 15.36 | UNIFORM ALLOWANCE | 001.0418.050.011 | JUNE 2016 | | 008 00014 |
| UNIFORM SERVICE 06/2016 | 246.64 | SPECIAL DEPARTMENT EXPEN | 001.0418.060.029 | JUNE 2016 | | 008 00015 |
| UNIFORM SERVICE 06/2016 | 1.92 | UNIFORM ALLOWANCE | 021.0424.050.011 | JUNE 2016 | | 008 00016 |
| UNIFORM SERV 06/2016 | 145.79 | UNIFORM ALLOWANCE | 062.0462.050.011 | JUNE 2016 | | 008 00017 |
| UNIFORM SERV. 06/2016 | 37.17 | UNIFORM ALLOWANCE | 063.0463.050.011 | JUNE 2016 | | 008 00018 |
| | 446.88 | *VENDOR TOTAL | | | | |
| AT&T EMMETT'S 06/2016 | 20.51 | TELEPHONE | 001.0422.060.020 | | | 008 00108 |
| AT&T (INTERNET) EMMETT'S 06/2016 | 65.81 | TELEPHONE | 001.0422.060.020 | | | 008 00109 |
| BANK OF AMERICA SUPPLIES 06/2016 | 10.55 | SPECIAL DEPARTMENT EXPEN | 062.0462.060.029 | | | 008 00070 |
| FAMILY DOLLAR 06/2016 | 15.89 | SPECIAL DEPARTMENT EXPEN | 063.0463.060.029 | | | 008 00071 |
| ANNUAL CRD FEES 06/2016 | 12.50 | SPECIAL DEPARTMENT EXPEN | 062.0462.060.029 | | | 008 00072 |
| ANNUAL CARD FEES 06/2016 | 12.50 | SPECIAL DEPARTMENT EXPEN | 063.0463.060.029 | | | 008 00073 |
| M. VILLEGAS LUNCH 6/16 | 7.77 | SPECIAL DEPARTMENT EXPEN | 001.0411.060.029 | | | 008 00074 |
| WDLK PIZZA FACTORY 6/16 | 47.59 | SPECIAL DEPARTMENT EXPEN | 001.0411.060.029 | | | 008 00075 |
| USPS 06/2016 | 23.30 | POSTAGE | 001.0411.060.022 | | | 008 00076 |
| BHVIOR ANALYSIS TRNG 6/16 | 481.00 | TRAVEL, CONFERENCES & ME | 001.0411.060.030 | | | 008 00077 |
| ANNUAL CRD FEES 06/2016 | 25.00 | SPECIAL DEPARTMENT EXPEN | 001.0411.060.029 | | | 008 00078 |
| M. VILLEGAS LNCH 06/2016 | 9.83 | SPECIAL DEPARTMENT EXPEN | 001.0411.060.029 | | | 008 00079 |
| SMART N FINAL 06/2016 | 241.26 | CONTRACTUAL SERVICES | 001.0403.060.028 | | | 008 00080 |
| EARTHLINK 06/2016 | 12.90 | SPECIAL DEPARTMENT EXPEN | 001.0410.060.029 | | | 008 00081 |
| DOLLAR TREE 06/2016 | 119.35 | CONTRACTUAL SERVICES | 001.0403.060.028 | | | 008 00082 |
| RICKS VENDING 06/2016 | 54.13 | CONTRACTUAL SERVICES | 001.0403.060.028 | | | 008 00083 |
| AMAZON 06/2016 | 127.49 | OFFICE SUPPLIES | 062.0462.060.023 | | | 008 00084 |
| CARROT TOP INDSTRS 06/16 | 2,600.08 | COMMUNITY PROMOTION FUND | 001.0409.060.066 | | | 008 00085 |
| AMAZON 06/2016 | 50.68 | OFFICE SUPPLIES | 062.0462.060.023 | | | 008 00086 |
| TRAINING LUNCH 06/2016 | 8.83 | TRAINING (POST REIMBURSE | 001.0411.060.036 | | | 008 00087 |
| MEALS FOR TRNING 06/16 | 20.16 | TRAINING (POST REIMBURSE | 001.0411.060.036 | | | 008 00088 |
| MEALS FOR TRNING 06/16 | 9.09 | TRAINING (POST REIMBURSE | 001.0411.060.036 | | | 008 00089 |
| MEALS FOR TRNING 06/16 | 14.68 | TRAINING (POST REIMBURSE | 001.0411.060.036 | | | 008 00090 |
| MEALS FOR TRNING 06/16 | 16.04 | TRAINING (POST REIMBURSE | 001.0411.060.036 | | | 008 00091 |
| MEALS FOR TRNING 06/16 | 8.77 | TRAINING (POST REIMBURSE | 001.0411.060.036 | | | 008 00092 |
| MEALS FOR TRNING 06/16 | 11.32 | TRAINING (POST REIMBURSE | 001.0411.060.036 | | | 008 00093 |
| MEALS FOR TRNING 06/16 | 4.79 | TRAINING (POST REIMBURSE | 001.0411.060.036 | | | 008 00094 |
| MEALS FOR TRNING 06/16 | 11.95 | TRAINING (POST REIMBURSE | 001.0411.060.036 | | | 008 00095 |
| ANNUAL CARD FEES 07/16 | 25.00 | TRAINING (POST REIMBURSE | 001.0411.060.036 | | | 008 00096 |
| SANTOS RETRMNT GFT 06/16 | 118.00 | CONTRACTUAL SERVICES | 001.0403.060.028 | | | 008 00097 |
| CARROT TOP INDSTRI 06/16 | 623.11 | COMMUNITY PROMOTION FUND | 001.0409.060.066 | | | 008 00098 |
| RITE AID 06/2016 | 3.99 | SPECIAL DEPARTMENT EXPEN | 001.0403.060.029 | | | 008 00099 |
| LUNCH M VILLEGAS 06/16 | 11.98 | SPECIAL DEPARTMENT EXPEN | 001.0411.060.029 | | | 008 00100 |
| STATE FOODS 06/2016 | 34.99 | SPECIAL DEPARTMENT EXPEN | 001.0403.060.029 | | | 008 00101 |
| JASON NEW COMETR 06/16 | 557.19 | OFFICE SUPPLIES | 063.0463.060.023 | | | 008 00102 |

| VENDOR NAME DESCRIPTION | AMOUNT | ACCOUNT NAME | FUND & ACCOUNT | CLAIM | INVOICE | PO# | F/P | ID | LINE |
|---|--|---|--|--|--|-----|---|----|--|
| BANK OF AMERICA JASON NEW COMPUTER 06/16 ADOBE 06/2016 ANNUAL CRD FEES 06/16 ANNUAL CARD FEES 06/16 5,993.87 | 557.18 79.98 12.50 12.50 5,993.87 | OFFICE SUPPLIES SPECIAL DEPARTMENT EXPEN OFFICE SUPPLIES OFFICE SUPPLIES *VENDOR TOTAL | 062.0462.060.023 001.0410.060.029 062.0462.060.023 063.0463.060.023 | | | | | | 008 00103 008 00104 008 00105 008 00106 |
| BERNARD PROFESSIONAL T.S TRANSCRIPT SERVICES 6/16 | 1,157.50 | CONTRACTURAL SERVICES | 001.0411.060.028 | | WPD 16-0367 | | | | 008 00107 |
| BSK ASSOCIATES WEEKLY EFFLUENT 06/2016 BACTI 06/2016 WDLK PLAZA 07/2016 WDLK PLAZA 06/2016 5,869.00 | 102.00 210.00 2,316.75 3,240.25 5,869.00 | CONTRACTURAL SERVICES CONTRACTURAL SERVICES CONTRACTURAL SERVICES CONTRACTURAL SERVICES *VENDOR TOTAL | 062.0462.060.028 063.0463.060.028 020.0590.739.028 020.0590.739.028 | | A614676 A614751 0077022 0077208 | | | | 008 00013 008 00012 008 00005 008 00006 |
| COLLINS & SCHOETTLER PLANNING CNSLTNT 06/2016 | 1,200.00 | CONTRACTURAL SERVICES | 001.0405.060.028 | | JUNE 2016 | | | | 008 00003 |
| DEPARTMENT OF JUSTICE BLD ALCHL ANALYSIS 6/16 | 175.00 | CONTRACTURAL SERVICES | 001.0411.060.028 | | 172946 | | | | 008 00004 |
| FRUIT GROWERS SUPPLY CO. CEMNT/ELBW PVC 06/16 RETRN ITEM 06/2016 ELBOW PVC 06/2016 MTR WTR TRO GRPHT 06/16 SUPPLIES 06/16 PEST PCQ RDNT BAIT 6/16 COUPLER/CWNT 06/16 SAFETY GLASSES 06/30 WTR COOLER 06/2016 OIL BAR/CHAIN 06/2016 ROUNDUP/SUPPLIES 06/2016 SUPPLIES 06/2016 GLND OUTR SPN CLN 06/16 IGLOO CUP DSPNSR 06/16 BOOTS J.BOCANEGRA 6/16 STAKE BAMBOO 06/16 OIL/STRING TRMWR 06/16 BRACKET UNIVERSAL 6/16 BOOTS G. PEREZ 06/2016 BOOTS G. PEREZ 06/2016 STATION MAINT. 06/2016 1,510.68 | 28.89 5.48CR 6.84 15.94 17.74 192.13 43.42 4.61 414.92 21.57 292.53 49.22 15.40 7.48 132.75 9.31 50.14 60.02 71.81 71.81 19.63 1,510.68 | SPECIAL DEPARTMENT EXPEN SPECIAL DEPARTMENT EXPEN SPECIAL DEPARTMENT EXPEN SPECIAL DEPARTMENT EXPEN SPECIAL DEPARTMENT EXPEN SPECIAL DEPARTMENT EXPEN SPECIAL DEPARTMENT EXPEN SPECIAL DEPARTMENT EXPEN SPECIAL DEPARTMENT EXPEN SPECIAL DEPARTMENT EXPEN SPECIAL DEPARTMENT EXPEN SPECIAL DEPARTMENT EXPEN SPECIAL DEPARTMENT EXPEN SPECIAL DEPARTMENT EXPEN UNIFORM ALLOWANCE SPECIAL DEPARTMENT EXPEN SPECIAL DEPARTMENT EXPEN SPECIAL DEPARTMENT EXPEN SPECIAL DEPARTMENT EXPEN SPECIAL DEPARTMENT EXPEN FIRE STATION MAINTENANC *VENDOR TOTAL | 029.0429.060.029 029.0429.060.029 029.0429.060.029 001.0421.060.029 001.0421.060.029 001.0421.060.029 062.0462.060.029 062.0462.060.029 029.0429.060.029 062.0462.060.029 001.0421.060.029 062.0462.060.029 062.0462.060.029 062.0462.060.029 001.0415.050.011 029.0429.060.029 029.0429.060.029 062.0462.060.029 062.0462.060.029 062.0462.060.029 004.0414.060.034 | 91771127 91771210 91771213 91772029 91772906 91773881 91773899 91774845 91774990 91775366 91777035 91777478 91777575 91777779 91777965 91779388 91779745 91779795 91780111 91780111 91783503 | | | 008 00019 008 00020 008 00021 008 00022 008 00023 008 00024 008 00025 008 00027 008 00026 008 00028 008 00029 008 00031 008 00030 008 00033 008 00032 008 00034 008 00035 008 00036 008 00037 008 00038 008 00069 | | |
| GAS COMPANY/THE VLNTEER BLDNG 06/2016 | 137.45 | UTILITIES | 004.0414.060.021 | | | | | | 008 00066 |

ACS FINANCIAL SYSTEM
07/20/2016 16:25:16

VENDOR NAME
DESCRIPTION

Schedule of Bills

GL540R-V08.03 PAGE 3
CITY OF WOODLAKE

| VENDOR NAME DESCRIPTION | AMOUNT | ACCOUNT NAME | FUND & ACCOUNT | CLAIM | INVOICE | PO# | F/P ID LINE |
|---|-----------|--------------------------|------------------|-------|--------------|-----|-------------|
| HEALTH WISE SERVICES KIOSK MED WASTE 06/16 | 150.00 | SPECIAL DEPARTMENT EXPEN | 062.0462.060.029 | | 0000014459 | | 008 00011 |
| LOUIE'S AUTO PARTS GATES THERMOSTAT 06/2016 | 100.16 | VEHICLE MAINTENANCE/OPER | 001.0418.060.032 | | 365271 | | 008 00047 |
| SUPPLIES 06/2016 | 18.31 | VEHICLE MAINTENANCE/OPER | 001.0411.060.032 | | 365348 | | 008 00048 |
| DISC PADS 06/2016 | 58.26 | SPECIAL DEPARTMENT EXPEN | 062.0462.060.029 | | 365359 | | 008 00055 |
| SUPPLIES 06/2016 | 18.45 | SPECIAL DEPARTMENT EXPEN | 001.0418.060.029 | | 365405 | | 008 00049 |
| U-JOINT 06/2016 | 62.53 | SPECIAL DEPARTMENT EXPEN | 062.0462.060.029 | | 365420 | | 008 00050 |
| SUPPLIES 06/2016 | 333.91 | VEHICLE MAINTENANCE/OPER | 001.0411.060.032 | | 365475 | | 008 00051 |
| HEX BIT SOCKET 06/2016 | 4.68 | SPECIAL DEPARTMENT EXPEN | 001.0418.060.029 | | 365529 | | 008 00052 |
| ENGINE MAINT 06/2016 | 31.75 | VEHICLE MAINTENANCE/OPER | 004.0414.060.032 | | 365532 | | 008 00068 |
| SEAL/DISC PAD/FLUID 6/16 | 91.02 | SPECIAL DEPARTMENT EXPEN | 062.0462.060.029 | | 365556 | | 008 00053 |
| DEXCOOL ANTIFREEZE 6/16 | 36.19 | VEHICLE MAINTENANCE/OPER | 001.0411.060.032 | | 365565 | | 008 00054 |
| | 755.26 | *VENDOR TOTAL | | | | | |
| MC MILLIAN, JEREMY REIMBURSEMENT TRNG 06/16 | 47.95 | TRAINING (POST REIMBURSE | 001.0411.060.036 | | | | 008 00040 |
| MID VALLEY DISPOSAL REFUSE SERVICES 06/16 | 44,357.69 | CONTRACTURAL SERVICES | 061.0461.060.028 | | JUN-16 | | 008 00041 |
| PORTERVILLE/ CITY OF ANML CNTRL UNDRPMNT 6/16 | 980.00 | CONTRACTURAL SERVICES | 001.0411.060.028 | | 201606221462 | | 008 00039 |
| PROTECTION ONE ALARM SERVICE 06/2016 | 52.48 | CONTRACTURAL SERVICES | 063.0463.060.028 | | | | 008 00010 |
| SELF HELP ENTERPRISES IN GARCIA #C0572 06/2016 | 29,709.00 | HOUSING CONSTRUCTION | 027.0712.080.081 | | | | 008 00008 |
| MUNOZ #C0627 06/2016 | 43,142.22 | HOUSING REHABILITATION | 026.0480.081.081 | | | | 008 00009 |
| GARCIA ID#C0115 6/2016 | 20,898.10 | HOUSING | 073.0473.080.081 | | JUNE 2016 | | 008 00001 |
| | 93,749.32 | *VENDOR TOTAL | | | | | |
| SOUTHERN CALIF EDISON CO FIRE STATION 06/2016 | 579.03 | UTILITIES | 004.0414.060.021 | | | | 008 00067 |
| TULARE REGIONAL MEDICAL LABS 06/2016 | 1,183.00 | CONTRACTURAL SERVICES | 001.0411.060.028 | | | | 008 00002 |
| VALLEY IND & FAM MED GRP PRE EMP. G. PEREZ 06/30 | 175.00 | SPECIAL DEPARTMENT EXPEN | 062.0462.060.029 | | 304526 | | 008 00044 |
| PRE EMP G. PEREZ 06/16 | 175.00 | SPECIAL DEPARTMENT EXPEN | 063.0463.060.029 | | 304526 | | 008 00045 |
| | 350.00 | *VENDOR TOTAL | | | | | |
| VOYAGER FLEET SYSTEMS IN PD FUEL 06/2016 | 4,459.38 | VEHICLE GASOLINE | 001.0411.060.035 | | | | 010 00001 |
| CITY FUEL 06/2016 | 59.42 | VEHICLE MAINTENANCE/OPER | 001.0415.060.032 | | | | 010 00002 |
| CITY FUEL 06/2016 | 831.91 | VEHICLE MAINTENANCE/OPER | 062.0462.060.032 | | | | 010 00002 |
| CITY FUEL 06/2016 | 831.91 | VEHICLE MAINTENANCE/OPER | 063.0463.060.032 | | | | 010 00002 |
| CITY FUEL 06/2016 | 59.42 | VEHICLE MAINTENANCE/OPER | 001.0421.060.032 | | | | 010 00002 |

| ACS FINANCIAL SYSTEM 07/20/2016 16:25:16 | | Schedule of Bills | | | CITY OF WOODLAKE GL540R-V08.03 PAGE 4 | | |
|--|--|--|--|-------|--|-----|---|
| VENDOR NAME DESCRIPTION | AMOUNT | ACCOUNT NAME | FUND & ACCOUNT | CLAIM | INVOICE | PO# | F/P ID LINE |
| VOYAGER FLEET SYSTEMS IN CITY FUEL 06/2016 TRANSIT FUEL 06/2016 FIRE DEPT. FUEL 06/16 | 594.23 887.42 525.82 8,249.51 | VEHICLE MAINTENANCE/OPER VEHICLE MAINT/OPERATIONS VEHICLE GASOLINE *VENDOR TOTAL | 001.0422.060.032 021.0424.060.032 004.0414.060.035 | | | | 010 00002 010 00003 010 00004 |
| VSCE INC. PLAZA PROJ. 06/2016 | 25,502.58 | CONTRACTURAL SERVICES | 020.0590.739.028 | | 6213 | | 008 00007 |
| WILLITTS EQUIPMENT CO. PRICE ADJUSTMT 06/16 MAINT YRD AIR CHRG 06/16 | 475.20CR 4,981.33 4,506.13 | CONTRACTURAL SERVICES CONTRACTURAL SERVICES *VENDOR TOTAL | 063.0463.060.028 063.0463.060.028 | | 27765CREDIT 29022 | | 008 00043 008 00042 |
| WOODLAKE GROWERS SUPPLY SUPPLIES 06/2016 FUSE 06/2016 CREDIT 06/2016 SUPPLIES 06/2016 SUPPLIES 06/2016 J. BOCANEGRA PNTS 06/2016 BRACKETS 06/2016 UNIFRM PNTS G PEREZ 6/16 | 16.55 9.45CR 23.64 23.64CR 23.64 49.14 53.98 28.19 53.89 215.94 | SPECIAL DEPARTMENT EXPEN SPECIAL DEPARTMENT EXPEN SPECIAL DEPARTMENT EXPEN SPECIAL DEPARTMENT EXPEN SPECIAL DEPARTMENT EXPEN SPECIAL DEPARTMENT EXPEN UNIFORM ALLOWANCE SPECIAL DEPARTMENT EXPEN SPECIAL DEPARTMENT EXPEN *VENDOR TOTAL | 001.0418.060.029 063.0463.060.029 063.0463.060.029 063.0463.060.029 063.0463.060.029 063.0463.060.029 001.0411.060.029 001.0415.050.011 001.0421.060.029 062.0462.060.029 | | 224038 224043 224044 224054 224055 224156 225053 225237 225246 | | 008 00058 008 00060 008 00057 008 00061 008 00059 008 00062 008 00063 008 00064 008 00056 |
| WOODLAKE/CITY OF UTILITIES 06/2016 | 1,155.00 | UTILITIES | 004.0414.060.021 | | | | 008 00065 |

VENDOR NAME
DESCRIPTION

REPORT TOTALS:

Schedule of Bills

| AMOUNT | ACCOUNT NAME | FUND & ACCOUNT | CLAIM | INVOICE | PO# | F/P | ID | LINE |
|------------|--------------|----------------|-------|---------|-----|-----|----|------|
| 198,640.59 | | | | | | | | |

RECORDS PRINTED - 000117

Schedule of Bills

CITY OF WOODLAKE
GL060S-V08.03 RECAPPAGE
GL540R

THE PRECEDING LIST OF BILLS PAYABLE WAS REVIEWED AND APPROVED FOR PAYMENT.

| DATE | APPROVED BY |
|-------|-------------|
| | |
| | |
| | |

New FY 16/17

ACS FINANCIAL SYSTEM
07/20/2016 16:

Check Register

GL540R-V08.03 PAGE 1

CITY OF WOODLAKE

AMOUNT

CHECK#

DATE

VENDOR

BANK BANK OF VISALIA

| | | | | |
|--------|--------------------------|-------|----------|-----------|
| 001598 | HINZ/CHRISTOPHER | 62066 | 07/08/16 | 210.00 |
| 001597 | LARA/ALAN | 62067 | 07/08/16 | 210.00 |
| 000494 | STATE OF CA-EDD | 62130 | 07/08/16 | 2,815.97 |
| 000799 | STATE OF CALIFORNIA | 62131 | 07/08/16 | 325.81 |
| 000585 | WOODLAKE CHAMBER | 62132 | 07/13/16 | 100.00 |
| -60701 | CASH (WOODLAKE FIRE) | 62134 | 07/15/16 | 300.00 |
| 000034 | A C S | 62161 | 07/22/16 | 3,087.74 |
| 001086 | ADSI | 62162 | 07/22/16 | 1,200.00 |
| 000783 | AFLAC | 62163 | 07/22/16 | 347.68 |
| 001227 | ANTHEM | 62164 | 07/22/16 | 1,307.31 |
| 001226 | BENELECT | 62165 | 07/22/16 | 685.00 |
| 001305 | BRAINARD INVESTIGATIONS | 62166 | 07/22/16 | 634.20 |
| 000351 | BSK ASSOCIATES | 62167 | 07/22/16 | 90.00 |
| 000915 | CA STATE DISBURSEMENT UN | 62168 | 07/22/16 | 361.50 |
| 001089 | CA TURF EQUIPMENT & SUPP | 62169 | 07/22/16 | 127.11 |
| 001601 | CERVANTES/KASSANDRA | 62170 | 07/22/16 | 390.00 |
| 001338 | CHEM QUIP, INC. | 62171 | 07/22/16 | 681.60 |
| 001565 | CORVERA/ISMAEL S. | 62172 | 07/22/16 | 1,000.00 |
| 001564 | CORVERA/LIDIA M | 62173 | 07/22/16 | 1,000.00 |
| 000646 | DEARBORN NATIONAL LIFE I | 62174 | 07/22/16 | 264.50 |
| 000898 | FOOTHILLS SUN-GAZETTE/TH | 62175 | 07/22/16 | 83.50 |
| 000118 | GROSS & STEVENS | 62176 | 07/22/16 | 1,418.39 |
| 000497 | HAAKER EQUIPMENT COMPANY | 62177 | 07/22/16 | 83.40 |
| 000542 | K R C SAFETY CO., INC. | 62178 | 07/22/16 | 62.79 |
| 001603 | MOLINA/MARIA MAGDALENA | 62179 | 07/22/16 | 2,000.00 |
| 001600 | OROZCO/ALEJANDRA | 62180 | 07/22/16 | 390.00 |
| 001026 | QUINN RENTAL SVCICIES | 62181 | 07/22/16 | 11.72 |
| 001222 | RAY MORGAN COMPANY | 62182 | 07/22/16 | 559.92 |
| 001602 | RENTERIA/DANIELLA | 62183 | 07/22/16 | 390.00 |
| 000024 | SOUTHERN CALIF EDISON CO | 62184 | 07/22/16 | 21,050.93 |
| -40718 | ST JOHNS RIVER MUTUAL | 62185 | 07/22/16 | 330.00 |
| 001098 | STILLWELL/DAVID | 62186 | 07/22/16 | 6,904.31 |
| 001599 | TAYLOR GROUP ARCHITECTS | 62187 | 07/22/16 | 7,550.00 |
| 001284 | TEAMSTERS LOCAL UNION NO | 62188 | 07/22/16 | 176.00 |
| 000910 | TRANSACT TECHNOLOGIES, I | 62189 | 07/22/16 | 228.21 |
| 001327 | WIRELESS INTERNET SERVIC | 62190 | 07/22/16 | 199.00 |

BANK OF VISALIA

56,576.59 ***

ACS FINANCIAL SYSTEM
07/20/2016 16:

BANK VENDOR

REPORT TOTALS:

Check Register CITY OF WOODLAKE
GL540R-V08.03 PAGE 2

CHECK# DATE AMOUNT

56,576.59

RECORDS PRINTED - 000104

Schedule of Bills

| VENDOR NAME DESCRIPTION | AMOUNT | ACCOUNT NAME | FUND & ACCOUNT | CLAIM | INVOICE | PO# | F/P ID LINE |
|---------------------------------------|----------|--------------------------|------------------|-------|-------------|-----|-------------|
| A C S MNTHLY TECHNOLOGY 06/16 | 3,087.74 | SPECIAL DEPARTMENT EXPEN | 001.0410.060.029 | | 1280860 | | 009 00005 |
| ADSI RCRDS MNGMNT 07/2016 | 1,200.00 | CONTRACTURAL SERVICES | 001.0411.060.028 | | 6784 | | 009 00032 |
| AFLAC SUPPLMNTL INS. 07/2016 | 347.68 | ACCIDENT & DIS INS WITHH | 001.0000.200.038 | | 062173 | | 009 00031 |
| ANTHEM BILLS INSURANCE 07/2016 | 51.02 | HEALTH INSURANCE | 001.0403.050.008 | | AUG. 2016 | | 009 00001 |
| BILLS INSURANCE 07/2016 | 49.71 | HEALTH INSURANCE | 001.0404.050.008 | | AUG. 2016 | | 009 00001 |
| BILLS INSURANCE 07/2016 | 25.51 | HEALTH INSURANCE | 001.0405.050.008 | | AUG. 2016 | | 009 00001 |
| BILLS INSURANCE 07/2016 | 53.51 | HEALTH INSURANCE | 001.0415.050.008 | | AUG. 2016 | | 009 00001 |
| BILLS INSURANCE 07/2016 | 22.74 | HEALTH INSURANCE | 001.0416.050.008 | | AUG. 2016 | | 009 00001 |
| BILLS INSURANCE 07/2016 | 86.51 | HEALTH INSURANCE | 001.0418.050.008 | | AUG. 2016 | | 009 00001 |
| BILLS INSURANCE 07/2016 | 36.06 | HEALTH INSURANCE | 001.0421.050.008 | | AUG. 2016 | | 009 00001 |
| BILLS INSURANCE 07/2016 | 120.80 | HEALTH INSURANCE | 001.0422.050.008 | | AUG. 2016 | | 009 00001 |
| BILLS INSURANCE 07/2016 | 70.14 | HEALTH INSURANCE | 061.0461.050.008 | | AUG. 2016 | | 009 00001 |
| BILLS INSURANCE 07/2016 | 312.30 | HEALTH INSURANCE | 062.0462.050.008 | | AUG. 2016 | | 009 00001 |
| BILLS INSURANCE 07/2016 | 287.60 | HEALTH INSURANCE | 063.0463.050.008 | | AUG. 2016 | | 009 00001 |
| BILLS INSURANCE 07/2016 | 109.41 | HEALTH INSURANCE | 021.0424.050.008 | | AUG. 2016 | | 009 00001 |
| BILLS INSURANCE 07/2016 | 47.97 | HEALTH INSURANCE | 029.0429.050.008 | | AUG. 2016 | | 009 00001 |
| BILLS INSURANCE 07/2016 | 24.81 | HEALTH INSURANCE | 032.0440.050.008 | | AUG. 2016 | | 009 00001 |
| BILLS INSURANCE 07/2016 | 9.22 | HEALTH INSURANCE | 001.0402.050.008 | | AUG. 2016 | | 009 00001 |
| | 1,307.31 | *VENDOR TOTAL | | | | | |
| BENELECT EMPLOYEES &RTREES 07/2016 | 16.39 | HEALTH INSURANCE | 001.0403.050.008 | | AUGUST 2016 | | 009 00016 |
| EMPLOYEES &RTREES 07/2016 | 15.97 | HEALTH INSURANCE | 001.0404.050.008 | | AUGUST 2016 | | 009 00016 |
| EMPLOYEES &RTREES 07/2016 | 8.19 | HEALTH INSURANCE | 001.0405.050.008 | | AUGUST 2016 | | 009 00016 |
| EMPLOYEES &RTREES 07/2016 | 17.19 | HEALTH INSURANCE | 001.0415.050.008 | | AUGUST 2016 | | 009 00016 |
| EMPLOYEES &RTREES 07/2016 | 7.30 | HEALTH INSURANCE | 001.0416.050.008 | | AUGUST 2016 | | 009 00016 |
| EMPLOYEES &RTREES 07/2016 | 27.79 | HEALTH INSURANCE | 001.0418.050.008 | | AUGUST 2016 | | 009 00016 |
| EMPLOYEES &RTREES 07/2016 | 11.58 | HEALTH INSURANCE | 001.0421.050.008 | | AUGUST 2016 | | 009 00016 |
| EMPLOYEES &RTREES 07/2016 | 38.81 | HEALTH INSURANCE | 001.0422.050.008 | | AUGUST 2016 | | 009 00016 |
| EMPLOYEES &RTREES 07/2016 | 22.53 | HEALTH INSURANCE | 061.0461.050.008 | | AUGUST 2016 | | 009 00016 |
| EMPLOYEES &RTREES 07/2016 | 100.33 | HEALTH INSURANCE | 062.0462.050.008 | | AUGUST 2016 | | 009 00016 |
| EMPLOYEES &RTREES 07/2016 | 92.39 | HEALTH INSURANCE | 063.0463.050.008 | | AUGUST 2016 | | 009 00016 |
| EMPLOYEES &RTREES 07/2016 | 35.15 | HEALTH INSURANCE | 021.0424.050.008 | | AUGUST 2016 | | 009 00016 |
| EMPLOYEES &RTREES 07/2016 | 15.41 | HEALTH INSURANCE | 029.0429.050.008 | | AUGUST 2016 | | 009 00016 |
| EMPLOYEES &RTREES 07/2016 | 7.97 | HEALTH INSURANCE | 032.0440.050.008 | | AUGUST 2016 | | 009 00016 |
| EMPLOYEES &RTREES 07/2016 | 3.00 | HEALTH INSURANCE | 001.0402.050.008 | | AUGUST 2016 | | 009 00016 |
| PD EXPENSE 07/2016 | 150.00 | HEALTH INSURANCE | 001.0411.050.008 | | AUGUST 2016 | | 009 00017 |
| FIRE DEPT. 07/2016 | 90.00 | HEALTH INSURANCE | 004.0414.050.008 | | AUGUST 2016 | | 009 00018 |
| ADMIN. FEES 07/2016 | 0.97 | HEALTH INSURANCE | 001.0403.050.008 | | AUGUST 2016 | | 009 00019 |
| ADMIN. FEES 07/2016 | 0.95 | HEALTH INSURANCE | 001.0404.050.008 | | AUGUST 2016 | | 009 00019 |
| ADMIN. FEES 07/2016 | 0.48 | HEALTH INSURANCE | 001.0405.050.008 | | AUGUST 2016 | | 009 00019 |
| ADMIN. FEES 07/2016 | 1.02 | HEALTH INSURANCE | 001.0415.050.008 | | AUGUST 2016 | | 009 00019 |
| ADMIN. FEES 07/2016 | 0.43 | HEALTH INSURANCE | 001.0416.050.008 | | AUGUST 2016 | | 009 00019 |
| ADMIN. FEES 07/2016 | 1.65 | HEALTH INSURANCE | 001.0418.050.008 | | AUGUST 2016 | | 009 00019 |

| VENDOR NAME DESCRIPTION | AMOUNT | ACCOUNT NAME | FUND & ACCOUNT | CLAIM | INVOICE | PO# | F/P ID LINE |
|--|----------|--------------------------|------------------|-------|---------------|-----|-------------|
| BENELECT ADMIN. FEES 07/2016 | 0.68 | HEALTH INSURANCE | 001.0421.050.008 | | AUGUST 2016 | | 009 00019 |
| ADMIN. FEES 07/2016 | 2.31 | HEALTH INSURANCE | 001.0422.050.008 | | AUGUST 2016 | | 009 00019 |
| ADMIN. FEES 07/2016 | 1.34 | HEALTH INSURANCE | 061.0461.050.008 | | AUGUST 2016 | | 009 00019 |
| ADMIN. FEES 07/2016 | 5.97 | HEALTH INSURANCE | 062.0462.050.008 | | AUGUST 2016 | | 009 00019 |
| ADMIN. FEES 07/2016 | 5.49 | HEALTH INSURANCE | 063.0463.050.008 | | AUGUST 2016 | | 009 00019 |
| ADMIN. FEES 07/2016 | 2.09 | HEALTH INSURANCE | 021.0424.050.008 | | AUGUST 2016 | | 009 00019 |
| ADMIN. FEES 07/2016 | 0.91 | HEALTH INSURANCE | 029.0429.050.008 | | AUGUST 2016 | | 009 00019 |
| ADMIN. FEES 07/2016 | 0.47 | HEALTH INSURANCE | 032.0440.050.008 | | AUGUST 2016 | | 009 00019 |
| ADMIN. FEES 07/2016 | 0.24 | HEALTH INSURANCE | 001.0402.050.008 | | AUGUST 2016 | | 009 00019 |
| | 685.00 | *VENDOR TOTAL | | | | | |
| BRAINARD INVESTIGATIONS BCKGRND E.FELIX 07/2016 | 634.20 | CONTRACTURAL SERVICES | 001.0411.060.028 | | 5067B | | 009 00014 |
| BSK ASSOCIATES BACTI 07/2016 | 90.00 | CONTRACTURAL SERVICES | 063.0463.060.028 | | A615031 | | 009 00002 |
| CA STATE DISBURSEMENT UN EMPLOYEE W/HLDNG 07/2016 | 361.50 | GARNISHMENT OF WAGES WIT | 001.0000.200.033 | | JULY 22, 2016 | | 009 00020 |
| CA TURF EQUIPMENT & SUPP EXMARK BLADE 07/2016 | 127.11 | SPECIAL DEPARTMENT EXPEN | 001.0421.060.029 | | 301990 | | 009 00025 |
| CASH (WOODLAKE FIRE) PETTY CASH FOR FD 7/16 | 300.00 | FIRE STATION MAINTENANC | 004.0414.060.034 | | | | 011 00006 |
| CERVANTES/KASSANDRA SNL LIFEGUARD 07/2016 | 390.00 | CONTRACTURAL SERVICES | 001.0403.060.028 | | | | 009 00040 |
| CHEM QUIP, INC. 30 GLN CHLRN 07/2016 | 681.60 | SPECIAL DEPARTMENT EXPEN | 063.0463.060.029 | | 5471149 | | 009 00030 |
| CORVERA/ISMAEL S. PRPTY AQUISTN 07/16 | 1,000.00 | CONTRACTURAL SERVICES | 023.0590.734.028 | | 060-250-035 | | 009 00042 |
| CORVERA/LIDIA M PROPERTY AQSTN 07/2016 | 1,000.00 | CONTRACTURAL SERVICES | 023.0590.734.028 | | 060-250-035 | | 009 00043 |
| DEARBORN NATIONAL LIFE I CITY EMPLOYEES 07/2016 | 6.73 | HEALTH INSURANCE | 001.0403.050.008 | | AUG. 2016 | | 009 00035 |
| CITY EMPLOYEES 07/2016 | 6.55 | HEALTH INSURANCE | 001.0404.050.008 | | AUG. 2016 | | 009 00035 |
| CITY EMPLOYEES 07/2016 | 3.36 | HEALTH INSURANCE | 001.0405.050.008 | | AUG. 2016 | | 009 00035 |
| CITY EMPLOYEES 07/2016 | 7.06 | HEALTH INSURANCE | 001.0415.050.008 | | AUG. 2016 | | 009 00035 |
| CITY EMPLOYEES 07/2016 | 3.00 | HEALTH INSURANCE | 001.0416.050.008 | | AUG. 2016 | | 009 00035 |
| CITY EMPLOYEES 07/2016 | 11.41 | HEALTH INSURANCE | 001.0418.050.008 | | AUG. 2016 | | 009 00035 |
| CITY EMPLOYEES 07/2016 | 4.75 | HEALTH INSURANCE | 001.0421.050.008 | | AUG. 2016 | | 009 00035 |
| CITY EMPLOYEES 07/2016 | 15.94 | HEALTH INSURANCE | 001.0422.050.008 | | AUG. 2016 | | 009 00035 |
| CITY EMPLOYEES 07/2016 | 9.25 | HEALTH INSURANCE | 061.0461.050.008 | | AUG. 2016 | | 009 00035 |
| CITY EMPLOYEES 07/2016 | 41.20 | HEALTH INSURANCE | 062.0462.050.008 | | AUG. 2016 | | 009 00035 |
| CITY EMPLOYEES 07/2016 | 37.94 | HEALTH INSURANCE | 063.0463.050.008 | | AUG. 2016 | | 009 00035 |

Schedule of Bills

| VENDOR NAME DESCRIPTION | AMOUNT | ACCOUNT NAME | FUND & ACCOUNT | CLAIM | INVOICE | PO# | F/P ID LINE |
|--|-----------|--------------------------|------------------|-------|-------------|-----|-------------|
| DEARBORN NATIONAL LIFE I CITY EMPLOYEES 07/2016 | 14.43 | HEALTH INSURANCE | 021.0424.050.008 | | AUG. 2016 | | 009 00035 |
| CITY EMPLOYEES 07/2016 | 6.33 | HEALTH INSURANCE | 029.0429.050.008 | | AUG. 2016 | | 009 00035 |
| CITY EMPLOYEES 07/2016 | 3.27 | HEALTH INSURANCE | 032.0440.050.008 | | AUG. 2016 | | 009 00035 |
| CITY EMPLOYEES 07/2016 | 1.28 | HEALTH INSURANCE | 001.0402.050.008 | | AUG. 2016 | | 009 00035 |
| PD EMPLOYEES 07/2016 | 92.00 | HEALTH INSURANCE | 001.0411.050.008 | | AUG. 2016 | | 009 00036 |
| | 264.50 | *VENDOR TOTAL | | | | | |
| FOOTHILLS SUN-GAZETTE/TH PUBLIC NOTICE 07/2016 | 83.50 | SPECIAL DEPARTMENT EXPEN | 029.0429.060.029 | | 50113 | | 009 00038 |
| GROSS & STEVENS SERVICES 07/2016 | 1,418.39 | VEHICLE MAINTENANCE/OPER | 001.0411.060.032 | | 87478 | | 009 00024 |
| HAAKER EQUIPMENT COMPANY LATCH SIDE DOOR 07/16 | 83.40 | SPECIAL DEPARTMENT EXPEN | 001.0422.060.029 | | C23205 | | 009 00027 |
| HINZ/CHRISTOPHER TRAINING 07/2016 | 210.00 | TRAINING (POST REIMBURSE | 001.0411.060.036 | | | | 011 00004 |
| K R C SAFETY CO., INC. NO PARKING PAPER 07/2016 | 62.79 | SPECIAL DEPARTMENT EXPEN | 063.0463.060.029 | | 27477 | | 009 00026 |
| LARA/ALAN A. LARA TRNING 07/16 | 210.00 | TRAINING (POST REIMBURSE | 001.0411.060.036 | | | | 011 00005 |
| MOLINA/MARIA MAGDALENA PROPRTY AQSTN 07/2016 | 2,000.00 | CONTRACTURAL SERVICES | 023.0590.734.028 | | 060-250-035 | | 009 00044 |
| OROZCO/ALEJANDRA SNL LIFEGUARD 07/2016 | 390.00 | CONTRACTURAL SERVICES | 001.0403.060.028 | | | | 009 00039 |
| QUINN RENTAL SERVCIES KEY 07/2016 | 11.72 | SPECIAL DEPARTMENT EXPEN | 062.0462.060.029 | | PC000361685 | | 009 00023 |
| RAY MORGAN COMPANY CITY MAINT. CNTRCT 7/16 | 559.92 | SPECIAL DEPARTMENT EXPEN | 001.0411.060.029 | | 1289370 | | 009 00033 |
| RENTERIA/DANIELLA SNL LIFEGUARD 07/2016 | 390.00 | CONTRACTURAL SERVICES | 001.0403.060.028 | | | | 009 00041 |
| SOUTHERN CALIF EDISON CO CITY ADMN BLDG 07/2016 | 1,361.81 | UTILITIES | 001.0410.060.021 | | | | 009 00006 |
| WATER DEPT. 07/2016 | 9,843.02 | UTILITIES | 063.0463.060.021 | | | | 009 00007 |
| MAINT. DEPT 07/2016 | 324.61 | UTILITIES | 001.0418.060.021 | | | | 009 00008 |
| PARKS DEPT. 07/2016 | 40.16 | UTILITIES | 001.0421.060.021 | | | | 009 00009 |
| SEWER UTILITY 07/2016 | 6,300.80 | UTILITIES | 062.0462.060.021 | | | | 009 00010 |
| AIRPORT DEPT. 07/2016 | 107.29 | UTILITIES | 041.0441.060.021 | | | | 009 00011 |
| SUBDVSION LIGHTS 07/2016 | 179.97 | UTILITIES | 029.0429.060.021 | | | | 009 00012 |
| STREETS DEPT. 07/2016 | 2,893.27 | UTILITIES | 001.0422.060.021 | | | | 009 00013 |
| | 21,050.93 | *VENDOR TOTAL | | | | | |

| ACS FINANCIAL SYSTEM 07/20/2016 16:32:20 | | Schedule of Bills | | CITY OF WOODLAKE GL540R-V08.03 PAGE 4 | |
|--|----------------------------------|---|--------------------------------------|--|------------------------|
| VENDOR NAME DESCRIPTION | AMOUNT | ACCOUNT NAME | FUND & ACCOUNT | CLAIM INVOICE | PO# F/P ID LINE |
| ST JOHNS RIVER MUTUAL ASSESSMNT 688 07/2016 | 330.00 | UTILITIES | 001.0421.060.021 | 215 | 009 00004 |
| STATE OF CA-EDD CITY ST TAX DEP 07/16 | 2,815.97 | WITHHOLDING TAX-STATE | 001.0000.200.028 | | 011 00001 |
| STATE OF CALIFORNIA FIRE ST TAX DEP 07/16 | 325.81 | WITHHOLDING TAX-STATE | 004.0000.200.028 | | 011 00002 |
| STILLWELL/DAVID INTEREST 07/2016 PRINCIPAL 07/2016 | 3,312.49 3,591.82 6,904.31 | INTEREST EXPENSE SEWER LOAN 240K D STILLW *VENDOR TOTAL | 062.0462.060.065 062.0000.200.064 | AUGUST 2016 AUGUST 2016 | 009 00021 009 00022 |
| TAYLOR GROUP ARCHITECTS WDLK COMMUNITY CNTR 7/16 | 7,550.00 | SPECIAL DEPARTMENT EXPEN | 001.0421.060.029 | 6091 | 009 00037 |
| TEAMSTERS LOCAL UNION NO WPD UNION DUES 07/2016 | 176.00 | POLICE ASS'N DUES WITHHE | 001.0000.200.030 | AUG. 2016 | 009 00034 |
| TRANSACT TECHNOLOGIES, I PAPER REGISTER 07/2016 | 228.21 | OFFICE SUPPLIES | 001.0410.060.023 | 1264828 | 009 00003 |
| WIRELESS INTERNET SERVIC WRELESS INTRNT 07/2016 | 199.00 | TELEPHONE | 001.0410.060.020 | 1163364 | 009 00015 |
| WOODLAKE CHAMBER CAR SHOW DONATION 07/16 | 100.00 | SPECIAL DEPARTMENT EXPEN | 001.0401.060.029 | | 011 00003 |

VENDOR NAME
DESCRIPTION

REPORT TOTALS:

Schedule of Bills

AMOUNT
56,576.59

ACCOUNT NAME

FUND & ACCOUNT

CLAIM INVOICE

PO# F/P ID LINE

RECORDS PRINTED - 000104

Schedule of Bills

CITY OF WOODLAKE
GL060S-V08.03 RECAPPAGE
GL540R

THE PRECEDING LIST OF BILLS PAYABLE WAS REVIEWED AND APPROVED FOR PAYMENT.

| | |
|------------|-------------------|
| DATE | APPROVED BY |
| | |
| | |

City of Woodlake

AGENDA ITEM IV-C

July 25, 2016

Prepared by Ramon Lara, City Staff

SUBJECT:

Action: Adoption of Resolution: Continuation of the Proclamation of the Existence of a Local Drought Emergency for the City of Woodlake

BACKGROUND:

The California Government Code section 8630 empowers the City Council of the City of Woodlake to proclaim the existence of a local drought emergency when the City of Woodlake is threatened or likely to be threatened by the conditions of extreme peril to the safety of persons and property that are or are likely to be beyond the control of the services, personnel, equipment, and facilities of this City. The City of Woodlake declared a drought emergency on the 26th day of May 2015 by Resolution No. 15-45.

On January 17, 2014, the Governor of the State of California proclaimed a state of emergency in the State of California due to current drought conditions in the State. The Governor's proclamation acknowledged that the State of California is experiencing record dry conditions that have persisted since 2012, with 2014 projected to become the driest year on record and called upon all Californians to reduce their water usage by 20 percent.

DISCUSSION:

The City of Woodlake water system is made up of five wells that are used as the only source to provide potable water to its residents. The wells have seen a consistent drop in groundwater level due to the drought and diversion of water, which has increased ground water pumping in the area. These conditions have created a situation where City wells will need to be updated or replaced. Due to the low water table, the wells have also become very inefficient. All these factors have created a burden on the City's water system.

The City requested informal bids for the construction of a test well along the St. Johns River. Well contractors are in large demand and soliciting bids was a challenge. The City was able to secure the services of Western Strata Exploration, Inc., who drilled Well #13. The City has now procured the services of Zim Industries, Inc. to begin the drilling of Well #14. The well drilling has been completed and testing has begun to get production numbers for the well. Both wells will then be engineered and connected to the current system.

RECOMMENDATIONS:

Staff recommends that the City Council continue the proclamation by the City Council of the City of Woodlake, State of California, proclaiming existence of a local drought emergency for the City of Woodlake. The City Council would review the need for continuing the local drought emergency at least once every 30 days until the Council terminates the local drought emergency.

FISCAL IMPACT:

The City Water Fund has been largely depleted by the inefficiency, need of updating and replacement of City wells. City staff will continue to look for other funding sources to construct future wells.

ATTACHMENTS:

1. Resolution: Continuation of the Proclamation of the Existence of a Local Drought Emergency for the City of Woodlake

BEFORE THE CITY COUNCIL
OF THE CITY OF WOODLAKE
STATE OF CALIFORNIA

In the matter of:

CONTINUATION OF THE PROCLAMATION OF) Resolution No.
OF THE EXISTENCE OF A LOCAL DROUGHT)
EMERGENCY FOR THE CITY OF WOODLAKE)

WHEREAS, California Government Code section 8630 empowers the City Council of the City of Woodlake to proclaim the existence of a local drought emergency when the City of Woodlake is threatened or likely to be threatened by the conditions of extreme peril to the safety of persons and property that are or are likely to be beyond the control of the services, personnel, equipment, and facilities of this City; and

WHEREAS, the City Council of the City of Woodlake declared a drought emergency on the 26th day of May 2015 by Resolution No. 15-45; and

WHEREAS, California Government Code section 8558(c) states that a “local emergency” means the duly proclaimed existence of conditions of extreme peril to the safety of persons and property within the territorial limits of the City caused by the drought; and

WHEREAS, pursuant to City Charter, the City Administrator has requested the City Council to proclaim the existence of a local emergency; and

WHEREAS, on January 17, 2014, the Governor of the State of California proclaimed a state of emergency in the State of California due to current drought conditions in the state; and

WHEREAS, the Governor’s proclamation acknowledged that the State of California is experiencing record dry conditions that have persisted since 2012; and

WHEREAS, the Governor’s proclamation also noted that the snowpack in California’s mountains is alarmingly below the normal average level for this date; and

WHEREAS, the Governor’s proclamation called upon all Californians to reduce their water usage by 20 percent; and

WHEREAS, the Governor’s proclamation called upon local water suppliers and municipalities to implement water shortage contingency plans immediately in order to avoid or forestall outright restrictions that could become necessary later in the drought season; and

WHEREAS, the current drought has negatively impacted local business, especially agricultural based business, of which City residents largely depend on; and

WHEREAS, the City of Woodlake depends on ground water to provide potable water to its residents; and,

WHEREAS, the City’s domestic wells have seen a consistent drop in groundwater levels, requiring that wells be updated and replaced, causing an economic burden on the City; and

WHEREAS, persistent drought conditions have negatively impacted and continue to threaten the City’s economy; and

WHEREAS, conditions of drought exacerbate already perilous fire conditions in the City; and

WHEREAS, on January 15, 2014, the Secretary of the United States Department of Agriculture designated 27 California counties, [*including Alameda, Alpine, Amador, Calaveras, Contra Costa, El Dorado, Fresno, Inyo, Kings, Kern, Los Angeles, Madera, Mariposa, Merced, Mono, Monterey, Sacramento, San Benito, San Bernardino, San Joaquin, San Luis Obispo, Santa Clara, Santa Barbara, Stanislaus, Tulare, Tuolumne, and Ventura*] as natural disaster areas due to drought which makes farm operators in the designated counties eligible to be considered for certain assistance including emergency loans from the U.S. Farm Service Agency for production losses; and

WHEREAS, on January 17, 2014, the California State Resources Control Board notified all water rights holders in California that, in the coming months, if dry weather conditions persist, the State

Water Board will notify water right holders in critically dry watersheds of the requirement to limit or stop diversions of water under their water right, based upon the priority of their right; and **WHEREAS**, these conditions are likely to be beyond the services, equipment, personnel and fiscal resources of the City of Woodlake.

NOW, THEREFORE, BE IT RESOLVED AND PROCLAIMED by the City Council of the City of Woodlake that for reasons set forth herein, wishes to extend the proclamation of the existence of a local drought emergency in the City of Woodlake; and

BE IT FURTHER RESOLVED that federal and state agencies are requested to provide financial and other assistance to residents, water suppliers, water rights holders, ranchers, farmers, business owners and local governments in the City of Woodlake to help them mitigate the persistent drought conditions; and

BE IT FURTHER RESOLVED that the City's water users heed the Governor's request to reduce water usage by 20 percent.

BE IT FURTHER RESOLVED that water suppliers and municipalities in the City of Woodlake heed the Governor's request to implement water shortage contingency plans immediately in order to avoid or forestall outright restrictions that could become necessary later in the drought season.

BE IT FURTHER RESOLVED that all city water associates, power companies, other involved agencies, utilities, and individuals do whatever they can to equitably allocate the available water to mitigate to the extent possible the hardships resulting from the lack of water during this extended drought period of recovery.

BE IT FURTHER RESOLVED, PROCLAIMED AND ORDERED that during the existence of this local drought emergency the powers, functions, and duties of the emergency organization of this City shall be those prescribed by state law, ordinances, and resolutions existing and passed in conjunction with this emergency, and that this emergency shall be deemed to continue to exist until the City Council of the City of Woodlake, State of California, proclaims its termination. Further, it is directed that this emergency proclamation be forwarded to the Director of the Governor's Office of Emergency Services and the Governor of the State of California.

BE IT FURTHER RESOLVED, PROCLAIMED AND ORDERED that the City Council of the City of Woodlake hereby authorizes the undertaking of all extraordinary police and planning powers in response to this local drought emergency including but not limited to the ability to modify, amend, or issue planning codes, building or safety codes, environmental health codes, and such other codes, orders, and regulations as determined necessary for the duration of the emergency.

BE IT FURTHER RESOLVED, PROCLAIMED AND ORDERED that public employees, officers, and governing bodies within the City are hereby granted full immunity to the extent allowed by law for actions undertaken in compliance with this proclamation.

BE IT FURTHER RESOLVED, PROCLAIMED AND ORDERED that during the existence of this local drought emergency, the City Administrator may request the City Council to amend this proclamation of a local drought emergency and, if this Council is not in session to amend this proclamation as necessary and, if this proclamation is amended by the City Administrator the Council shall take action to ratify the amendment within 30 days thereafter or the amendment shall have no further force or effect.

BE IT FURTHER RESOLVED, PROCLAIMED AND ORDERED that this City Council will review the need for continuing the local drought emergency at least once every 30 days until this Council terminates the local drought emergency. [Note: Government Code section 8630(c) requires the governing board to review the local emergency **at least once every 30 days** until the governing body terminates the local emergency.] **EXTENDED** this 25th day of July 2016.

The foregoing resolution was adopted upon a motion of Councilmember _____, and seconded by Councilmember _____, and carried by the following vote at the City Council meeting held on July 25, 2016.

AYES:
NOES:
ABSTAIN
ABSENT:

Rudy Mendoza, Mayor

ATTEST:

Irene Zacarias, City Clerk

City of Woodlake

AGENDA ITEM IV-D

July 25, 2016

Prepared by Ramon Lara, City Staff

SUBJECT:

Action: Adoption of Resolution: Reaffirm the Approval of Emergency Expenditures for the Development and Implementation of the City of Woodlake Well Project

BACKGROUND:

The California Government Code section 8630 empowers the City Council of the City of Woodlake to proclaim the existence of a local drought emergency when the City of Woodlake is threatened or likely to be threatened by the conditions of extreme peril to the safety of persons and property that are or are likely to be beyond the control of the services, personnel, equipment, and facilities of this City. The Council declared a drought emergency on the 26th day of May 2015 by Resolution No. 15-45 and by Resolution No. 15-46 the Council approved an exemption pursuant to the California Environmental Quality Act (CEQA), and State CEQA Guidelines relating to the environmental evaluation of the City of Woodlake Water Well Project. On June 22, 2015 by Resolution No. 15-59 Council approved emergency expenditures for the development and implementation of the City of Woodlake Well Project and has continued to reaffirm them at every Council meeting.

The City of Woodlake water system is made up of five wells that are used as the only source to provide potable water to its residents. The wells have seen a consistent drop in groundwater level due to the drought and diversion of water, which has increased ground water pumping in the area. These conditions have created a situation where City wells will need to be updated or replaced. Due to the low water table, the wells have also become very inefficient. All these factors have created a burden on the City's water system.

DISCUSSION:

With the continued drought and pumping of groundwater in the area, the City water system has begun to struggle to meet the demand of its customers. Water tables continue to fall and wells continue to become more inefficient. In an effort to protect the City's water resources, the City has taken the necessary steps towards drilling new City wells and is looking at options to make their current wells more efficient. Pervasive drought conditions have also significantly increased demand for well contractors, who now have very long waiting lists to drill wells and no incentive to engage a bidding process, thereby creating procurement challenges for local public agencies. The City has also implemented its Stage 4 water regulations and has made major cuts in the use of water at City facilities.

At this time the City has begun the drilling of a well along the St. John's River within the City Airport Property. The well sixteen inch casing and gravel pack are in. The seal of the well has been completed with the development and testing of the well now in progress. City staff believes that if a new, deeper well is not added to the current water system immediately, then the City may not have the ability to meet its customers' demands in the near future.

The declaration of an emergency, when passed by four-fifths votes of its members, allows the expenditure of public money for a new City well, which will allow the City to meet its consumers' demands. The declaration has helped streamline the construction of the well by allowing the City to forego a competitive bid process as per the Public Contract Code. When the Council approves such action then the declaration of emergency will have to be re-approved by a four-fifths vote at every regularly scheduled meeting until the action is terminated.

Currently the City has spent \$136,000.00 for the drilling of Well #13 and \$19,995.00 for the development of the well. The well is currently producing approximately 250 GPM. The City expected this well to produce over 500 GPM. Currently tests are being run to obtain a better understanding of why the well is not producing at the estimated level.

The City has procured Zim Industries Inc. to begin the drilling of Well #14. The City believes it will cost approximately \$215,000 to drill the well. Drilling is expected to begin in two weeks.

RECOMMENDATIONS:

Staff recommends that the City Council approve the emergency expenditures of public money for the construction of a new City well to meet the demands of its customers and to safeguard the health of City residents. At this time staff is requesting that Council reaffirm the approval of \$156,000 in expenditures for the drilling and development of Well #13. Staff also recommends that Council approve a \$215,000 budget for the drilling of Well #14. The City Council will review the need for continuing emergency expenditures at every scheduled Council meeting until the action is terminated.

FISCAL IMPACT:

The development and implementation of two new City wells will be paid out of the Water Fund. Staff has currently allocated \$750,000 to the project.

ATTACHMENTS:

1. Resolution: Reaffirm the Approval of Emergency Expenditures for the Development and Implementation of the City of Woodlake Well Project

BEFORE THE CITY COUNCIL
OF THE CITY OF WOODLAKE
STATE OF CALIFORNIA

In the matter of:

| | |
|--|----------------|
| REAFFIRM THE APPROVAL OF EMERGENCY) | Resolution No. |
| EXPENDITURES FOR THE DEVELOPMENT AND) | |
| IMPLEMENTATION OF THE CITY OF WOODLAKE) | |
| WELL PROJECT) | |

WHEREAS, California Government Code section 8630 empowers the City Council of the City of Woodlake to proclaim the existence of a local drought emergency when the City of Woodlake is threatened or likely to be threatened by the conditions of extreme peril to the safety of persons and property that are or are likely to be beyond the control of the services, personnel, equipment, and facilities of this City; and

WHEREAS, California Government Code section 8558(c) states that a “local emergency” means the duly proclaimed existence of conditions of extreme peril to the safety of persons and property within the territorial limits of the City caused by the drought; and

WHEREAS, the City Council of the City of Woodlake declared a drought emergency in the City of Woodlake on the 26th of May 2015 by Resolution No. 15-45; and

WHEREAS, on January 17, 2014, the Governor of the State of California proclaimed a state of emergency in the State of California due to current drought conditions in the state and said state of emergency remains in effect; and

WHEREAS, the Governor’s proclamation acknowledged that the State of California is experiencing record dry conditions that have persisted since 2012, with 2014 projected to become the driest year on record; and

WHEREAS, the Governor’s proclamation called upon local water suppliers and municipalities to implement water shortage contingency plans immediately in order to avoid or forestall outright restrictions that could become necessary later in the drought season; and

WHEREAS, the current drought has negatively impacted local business, especially agricultural based business, of which City residents largely depend on; and

WHEREAS, the City has implemented Stage 4 of its water conservation regulations, which restricts water use in the city; and

WHEREAS, the City of Woodlake depends on ground water to provide potable water to its residents; and,

WHEREAS, the City’s domestic wells have seen a consistent drop in groundwater levels, requiring that wells be updated and replaced, causing an economic burden on the City; and

WHEREAS, persistent drought conditions have negatively impacted and continue to threaten the City’s economy; and

WHEREAS, conditions of drought exacerbate already perilous fire conditions in the City; and

WHEREAS, these conditions are likely to be beyond the services, equipment, personnel and fiscal resources of the City of Woodlake.

NOW, THEREFORE, BE IT RESOLVED AND PROCLAIMED by the City Council of the City of Woodlake that for reasons set forth herein, emergency expenditures may take place in order to safeguard the health of City residents by the construction of a new City well; and

BE IT FURTHER RESOLVED that in case of an emergency the Public Contract Code section 20168 allows for the legislative body to pass a resolution by at least a four-fifths vote of its members declaring that the public interest and necessity demand the immediate expenditure of public money to safeguard life, health, or property allowing the City to forego competitive solicitations for bids, as the action is necessary to respond to the emergency; and

BE IT FURTHER RESOLVED that on the 26th day of May 2015 by Resolution NO. 15-46 the Council approved an exemption pursuant to the California Environmental Quality Act (CEQA), and State CEQA Guidelines relating to the environmental evaluation of the City of Woodlake Water Well Project.

BE IT FURTHER RESOLVED that on the 22nd day of June 2015 by Resolution NO. 15-59 the Council approved emergency expenditures for the development and implementation of the City of Woodlake Water Well Project.

BE IT FURTHER RESOLVED that water suppliers and municipalities in the City of Woodlake heed the Governor's request to implement water shortage contingency plans immediately in order to avoid or forestall outright restrictions that could become necessary later in the drought season.

BE IT FURTHER RESOLVED that all city water associates, power companies, other involved agencies, utilities, and individuals do whatever they can to equitably allocate the available water to mitigate to the extent possible the hardships resulting from the lack of water during this extended drought period of recovery.

BE IT FURTHER RESOLVED, PROCLAIMED AND ORDERED that during the existence of this local drought emergency the powers, functions, and duties of the emergency organization of this City shall be those prescribed by state law, ordinances, and resolutions existing and passed in conjunction with this emergency, and that this emergency shall be deemed to continue to exist until the City Council of the City of Woodlake, State of California, proclaims its termination. Further, it is directed that this emergency proclamation be forwarded to the Director of the Governor's Office of Emergency Services and the Governor of the State of California.

BE IT FURTHER RESOLVED, PROCLAIMED AND ORDERED that the City Council of the City of Woodlake hereby authorizes the undertaking of all extraordinary police and planning powers in response to this local drought emergency including but not limited to the ability to modify, amend, or issue planning codes, building or safety codes, environmental health codes, and such other codes, orders, and regulations as determined necessary for the duration of the emergency.

BE IT FURTHER RESOLVED, PROCLAIMED AND ORDERED that public employees, officers, and governing bodies within the City are hereby granted full immunity to the extent allowed by law for actions undertaken in compliance with this emergency action.

BE IT FURTHER RESOLVED, PROCLAIMED AND ORDERED that this City Council reaffirm the approval of \$156,000 in expenditures for the drilling and development of Well #13, approves a \$215,000 budget for the drilling of Well #14 and that Council will review the need for continuing emergency expenditures at every regularly scheduled meeting hereafter until the drought emergency is terminated or no further emergency expenditures are necessary. [Note: Public Contract Code section 22050(c) requires the governing board to review the emergency expenditures at every regularly scheduled meeting until the governing body terminates the emergency expenditure or emergency no longer exists.] **DECLARED** this 25th day of July 2016.

The foregoing resolution was adopted upon a motion of Councilmember _____, and seconded by Councilmember _____, and carried by the following vote at the City Council meeting held on July 25, 2016.

AYES:

NOES:

ABSTAIN:

ABSENT:

Rudy Mendoza, Mayor

ATTEST:

Irene Zacarias, City Clerk

City of Woodlake

AGENDA ITEM IV-E

July 25, 2016

Prepared by Ramon Lara, City Staff

SUBJECT:

Action: Adoption of Resolution: Approval of Right of Way Agreements, Grant Deeds, Temporary Construction Easement Deeds and Funds Disbursements for Those Properties Associated With the City of Woodlake South Valencia ADA Project

BACKGROUND:

On April 30, 2012 the City of Woodlake entered into a Supplemental Agreement with the Tulare County Transportation Authority in the amount of one hundred and seventy-eight thousand dollars (\$178,000) for preliminary engineering. On December 14, 2015 the City entered into a secondary Supplemental Agreement in the amount of two hundred and forty-three thousand dollars (\$243,000) in Measure R funding for right-of-way and admin costs. Once right-of-way is completed the City will use SHOPP and local funds for the construction of the project.

DISCUSSION:

City staff has been working with their right-of-way consultant Hamner, Jewell & Associates to acquire the necessary forty-six parcels associated with the City of Woodlake South Valencia ADA Project. Valuations were done for all forty-six parcels and the valuations along with offers were presented to each individual owner. All property owners were offered three dollars a square foot. At this time the following owners have agreed to sell the necessary right-of-way for the construction of the City of Woodlake South Valencia ADA Project:

- | | |
|--------------------------------------|------------|
| 1. APN# 060-250-035 (Molina-Corvera) | \$4,000.00 |
|--------------------------------------|------------|

RECOMMENDATIONS:

City staff recommends that Council approve the Right of Way Agreements, Grant Deeds, Temporary Construction Easement Deeds and Funds Disbursements for those properties listed above that are associated with the City of Woodlake South Valencia ADA Project and authorize the City Administrator to execute all necessary documents (templates are attached as Attachment No. 2). All properties are being purchased with local and Measure R funds at their valuation amount (Attachment No. 1).

FISCAL IMPACT:

No fiscal impact to the General Fund. Right-of-way costs will be covered with local and Measure R funds.

ATTACHMENTS:

1. Resolution: Approval of Right of Way Agreements, Grant Deeds, Temporary Construction Easement Deeds and Funds Disbursements for Those Properties Associated With the City of Woodlake South Valencia ADA Project
2. Attachment No. 1 – South Valencia ADA Project Valuations
3. Attachment No. 2 – Template Right of Way Agreement, Grant Deed, Temporary Construction Easement Deed (Bautista)

BEFORE THE CITY COUNCIL
OF THE CITY OF WOODLAKE
COUNTY OF TULARE
STATE OF CALIFORNIA

In the matter of:

APPROVAL OF THE RIGHT OF WAY AGREEMENTS,)
GRANT DEEDS, TEMPORARY CONSTRUCTION)
EASEMENT DEEDS AND FUND DISBURSEMENTS)
FOR THOSE PROPERTIES ASSOCIATED WITH THE)
CITY OF WOODLAKE SOUTH VALENACIA ADA PROJECT)

Resolution No.

Councilmember Martinez, offered the following resolution and moved its adoption. Approve the Right of Way Agreements, Grant Deeds, Temporary Construction Easement Deeds and Funds Disbursements for those properties associated with the City of Woodlake South Valencia ADA Project.

WHEREAS, the City has secured funding for the development and implementation of the South Valencia ADA Project, which will consist of the construction of curb, gutter, sidewalk and storm drain improvements on South Valencia Blvd. from Bravo Avenue south to the Wutchumna Ditch; and,

WHEREAS, the City has hired a qualified firm to be responsible for: appraisals and “good faith negotiations” with property owners for the purchase of right-of-way; adherence to all professional standards and the Caltrans Right-of-Way Manual and all applicable laws and regulations; and,

WHEREAS, the following property owners have agreed to sell the necessary right-of-way at its valuation amount for the construction of the City of Woodlake South Valencia ADA Project:

1. APN# 060-250-035 (Molina-Corvera) \$4,000.00

NOW, THEREFORE, THE CITY OF WOODLAKE DOES RESOLVE to purchase the properties listed above for their valuation amount for the construction of the City of Woodlake South Valencia ADA Project and authorizes the City Administrator to execute all necessary documents.

The foregoing resolution was adopted upon a motion of Councilmember _____, and seconded by Councilmember _____, and carried by the following vote at the City Council meeting held on July 25, 2016.

AYES:
NOES:
ABSTAIN:
ABSENT:

Mayor, Rudy Mendoza

ATTEST:

Irene Zacarias, City Clerk

City of Woodlake / S. Valencia ADA Project / Valuations (41 owners, 46 parcels)

| Owner | Valuation Amount | |
|--|-------------------------|-----------------|
| Barajas (2 parcels) | (-027) | \$3,000 |
| | (-032) | \$2,150 |
| Bautista | | \$1,250 |
| Cabrera | | \$1,150 |
| Cano | | \$1,550 |
| Cazares | | \$2,850 |
| Chavez | | \$1,250 |
| Church of Christ | | \$1,850 |
| Cortes | | \$1,350 |
| Corvera | | \$1,900 |
| Estrada | | \$3,000 |
| Flores | | \$2,800 |
| Galvan | | \$3,550 |
| Gamble | | \$2,350 |
| Guijon | | \$1,150 |
| Hernandez-Aviles | | \$1,900 |
| Johnson | | \$2,650 |
| Johnson Trust | | \$2,500 |
| Lara | | \$500 |
| Marquez | | \$1,800 |
| Mendoza | | \$1,250 |
| Mendoza-Aguilar | | \$1,250 |
| Mendoza-Quiroz | | \$1,550 |
| Molina-Corvera | | \$4,000 |
| Muckleroy | | \$2,450 |
| Ortega | | \$1,150 |
| Ortega-Jimenez | | \$2,700 |
| Palafox | | \$2,050 |
| Pentecostal Church (2 parcels) TCE only | (-033) | \$65 |
| | (-034) | \$150 |
| Quezada | | \$1,800 |
| Ramos | | \$500 |
| Ray (4 parcels) | (-017) | \$2,850 |
| | (-018) | \$2,250 |
| | (-019) | \$1,600 |
| | (-028) | \$1,900 |
| Robinson | | \$1,250 |
| Ruiz | | \$1,150 |
| Sandoval – TCE only | | \$110 |
| Scott | | \$2,900 |
| Silva-Espinoza | | \$2,650 |
| Stockton | | \$1,350 |
| Terry | | \$1,350 |
| Torres | | \$1,700 |
| Tovar | | \$2,350 |
| Vidrio | | \$1,150 |
| Total | | \$83,975 |

PARCEL NO.: APN 061-181-009 (Bautista)

PROJECT: City of Woodlake – S. Valencia ADA Project

RIGHT OF WAY AGREEMENT

THIS AGREEMENT (“Agreement”) is made and entered into by and between

Ricardo Bautista, a single man,

hereinafter called “Grantor,” and

City of Woodlake, a Municipal Corporation

hereinafter called “City.”

Instruments in the form of a Grant Deed (“Deeds”) and Temporary Construction Easement Deed (“TCE Deed”) (collectively “Deeds”) covering the property particularly described therein, have been executed concurrently with this Agreement and delivered to City representatives.

In consideration of which, and other considerations hereinafter set forth, it is mutually agreed as follows:

1. The parties have herein set forth the whole of their agreement. The performance of this Agreement constitutes the entire consideration for said Deeds and shall relieve the City and the State of California of all further obligation or claims on this account, or on account of the location, grade or construction of the proposed road improvement, except as stated in Paragraphs 2.E. and 2.F. below.

2. The City shall:

A. PAYMENT. Pay to the order of the Grantor the sum of \$1,150 (Eleven Hundred Fifty Dollars) as consideration in full for the herein real property interests, for the loss, replacement and moving of any improvements, and for entering into this Agreement. Said sum shall be paid when title to said real property has vested in the entity as grantee under the Deeds free and clear of all liens, encumbrances, assessments, easements and leases recorded or unrecorded, except for recorded public utility easements, public right of way, taxes for the current year, and other encumbrances approved by City.

B. RECORDATION OF INSTRUMENT. Accept the Deeds herein referenced and cause the same to be recorded in the office of the Tulare County Recorder at such time as when clear title can be conveyed.

C. MISCELLANEOUS COSTS. Pay all title insurance and recording fees incurred in this transaction.

D. CLEARANCE OF BONDS, ASSESSMENTS, OR DELINQUENT TAXES. Have the authority to deduct and pay from the amount shown in Clause 2.A. above any amount necessary to satisfy any bond demands and delinquent taxes due in any year except the year in which this escrow closes, together with penalties and interest thereon, and/or delinquent and unpaid non-delinquent assessments which have become a lien at the close of escrow.

E. PROPERTY RESTORATION AND TEMPORARY CONSTRUCTION EASEMENT. Shall generally restore the property described in the TCE Deed to the condition that existed prior to City's project construction, to the extent reasonably practical, except for any trees. Permission is hereby granted to City or its authorized agent to enter on Grantor's land, where necessary, to conform and repair/replace any irrigation, landscaping and sloping disturbed by the project construction.

F. INDEMNIFICATION. Defend, indemnify, and hold harmless Grantor from any and all claims, damages, costs, judgments, or liability caused by City or its officers, employees or agents specifically arising from City construction and restoration work on Grantor's real property during the temporary easement period specified in the referenced TCE Deed.

3. The Grantor:

A. PAYMENT ON MORTGAGE OR DEED OF TRUST. Agrees that any or all monies payable under this Agreement up to and including the total amount of the unpaid principal and interest on the note(s) secured by mortgage(s) or deed(s) of trust, if any, and all other amounts due and payable in accordance with the terms and conditions of said mortgage(s) or deed(s) of trust, shall upon demand(s) be made payable to the mortgagee(s) or beneficiary(s) entitled thereunder.

B. LEASE INDEMNIFICATION. Warrants there are no oral or written leases on all or any portion of the herein referenced real property exceeding a period of one month, or if there are such leases, Grantor agrees to hold the City and State harmless and reimburse City and State for any and all of its losses and expenses occasioned by reason of any lease of said property held by tenant of Grantor for a period exceeding one month.

C. RECONNECTED DRIVEWAYS AND FENCES. At no expense to the Grantor and at the time of construction, City will reconnect Grantor's existing driveway/s to the adjacent public road at their present location and will relocate any impacted fences. Upon completion of construction of said driveway/s, it/they will be considered as an encroachment under permit onto the adjacent public road, and is/are to be maintained, repaired and operated as such by Grantor in accordance with and subject to the laws, rules, and regulations of the public entity controlling said road.

Permission is hereby granted to City or its authorized agent to enter on Grantor's land as described in the TCE Deed, to conform and reconnect Grantor's driveway/s and relocate any fences as described herein. Grantor understands and agrees that after completion of the work described, said driveway/s and fences will be considered as Grantor's sole property and Grantor will be responsible for its/their maintenance and repair.

D. POSSESSION. Except as provided herein, shall retain possession of the property conveyed up to and including December 31, 2015 or the date of recording of the Deeds conveying title to City and State, whichever occurs first, upon which date possessory rights shall pass to City and State.

E. HAZARDOUS MATERIAL. The acquisition price of the property being acquired in this transaction reflects the fair market value of the property without the presence of contamination. If the property being acquired is found to be contaminated by the presence of hazardous waste which requires mitigation under Federal or State law, the City and State may elect to recover its cleanup costs from those who caused or contributed to the contamination.

4. The Parties agree:

A. JUDGMENT IN LIEU OF DEED. In the event Grantor is unable to deliver title in a reasonable time under the terms of the Agreement, the City may file an action in eminent domain to pursue the acquisition of the real property interests described in the referenced Deeds, and this Agreement shall constitute a stipulation which may be filed in said proceedings as final and conclusive evidence of the total amount of damages for the taking, including all of the items listed in Section 1260.230 of the Code of Civil Procedure, regarding said property rights.

B. ARTICLE HEADINGS. Article headings in this Agreement are for convenience only and are not intended to be used in interpreting or construing the terms, covenants and conditions of this Agreement.

C. COMPLETE UNDERSTANDING. This Agreement constitutes the entire understanding between the parties with respect to the subject matter hereof, superseding all negotiations, prior discussions, and preliminary agreements or understandings, written or oral. This Agreement may not be amended except in writing by the parties hereto or their successors or assigns.

D. CITY COUNCIL APPROVAL. This Agreement is subject to and conditioned upon approval and ratification by the Woodlake City Council. This Agreement is not binding upon the City until executed by the appropriate City official(s) acting in their authorized capacity.

E. NO THIRD-PARTY BENEFICIARIES INTENDED. Unless specifically set forth, the parties to this Agreement do not intend to provide any other party with any benefit or enforceable legal or equitable right or remedy.

F. BINDING EFFECT. This Agreement shall inure to the benefit of and constitute a binding obligation upon the successors and assigns of the parties hereto.

G. COUNTERPARTS. This Agreement may be executed in counterparts, each of which so executed shall, irrespective of the date of its execution and delivery, be deemed an original, and all such counterparts together shall constitute one and the same document.

No Obligation Other Than Those Set Forth Herein Will Be Recognized.

Dated: _____

GRANTOR:

Ricardo Bautista, a single man

By _____
Ricardo Bautista

GRANTOR'S MAILING ADDRESS:

Richardo Bautista

3729 E. Duma Street

Compton, CA 90221-5125

APPROVED AS TO FORM:

By _____
Michael L. Farley
City Attorney

APPROVED AS TO CONTENT:

By _____
Jason Waters
Community Services Director

CITY OF WOODLAKE

By _____
Ramon Lara
City Administrator

MAILING ADDRESS OF CITY:

350 N. Valencia Blvd.

Woodlake, CA 93286

ATTEST:

By _____
Irene Zacarias, City Clerk

RECORDING REQUESTED BY AND WHEN
RECORDED MAIL TO:

California Department of Transportation
855 M Street, Suite 200
Fresno, CA 93721

State Business – No Recording Fee
(Gov. Code 27383)
DEPT. OF TRANSPORTATION

BY: _____
Right of Way Agent

Space above this line for Recorder's Use

Portion APN 061-181-009

GRANT DEED

| District | County | Route | Postmile | Number |
|----------|--------|-------|-------------|--------|
| 06 | TUL | 245 | P.M. 6.7 | |

RICARDO BAUTISTA, a single man,

hereinafter called GRANTOR, hereby grants to the State of California, Department of Transportation, hereinafter called STATE, all that real property in the City of Woodlake, County of Tulare, State of California, described as follows:

See "Exhibit A", attached.

The GRANTOR further understands that the present intention of the STATE is to construct and maintain a public highway on the lands hereby conveyed in fee and the GRANTOR, for itself and its successors and assigns, hereby waives any claims for any and all damages to GRANTOR's remaining property contiguous to the property hereby conveyed by reason of the location, construction, landscaping or maintenance of said highway.

Dated: _____

Ricardo Bautista

This is to certify that the State of California, acting by and through the Department of Transportation (according to Section 27281 of the Government Code), accepts for public purposes the real property described in this deed and consents to its recordation.

Dated _____

By _____
Director of Transportation

By _____
Attorney in Fact

ACKNOWLEDGMENT

| |
|--|
| A notary public or other officer completing this certificate verifies only the identity of the individual who signed the document to which this certificate is attached, and not the truthfulness, accuracy, or validity of that document. |
|--|

State of California
County of _____

On _____ before me, _____, Notary Public, personally appeared _____, who proved to me on the basis of satisfactory evidence to be the person(s) whose name(s) is/are subscribed to the within instrument and acknowledged to me that he/she/they executed the same in his/her/their authorized capacity(ies), and that by his/her/their signatures(s) on the instrument the person(s), or the entity upon behalf of which the person(s) acted, executed the instrument.

I certify under PENALTY OF PERJURY under the laws of the State of California that the foregoing paragraph is true and correct.

WITNESS my hand and official seal.

Signature _____ (Seal)

“Exhibit A”

The West 7.00 feet of that portion of Lot 181 of Woodlake, per map recorded in Volume 10 of Maps, at Page 27, Tulare County Records, situated in the Southwest quarter of the Northwest quarter of Section 31, Township 17 South, Range 27 East, Mount Diablo Base and Meridian, in the City of Woodlake, County of Tulare, State of California, according to the official plat thereof; more particularly described as follows;

Beginning at a point on the West line of said Lot 181, which is 750 feet South of the Northwest corner thereof;

Thence, East, 160 feet;

Thence, South, 50 feet;

Thence, West, 160 feet, to the West line of said Lot 181;

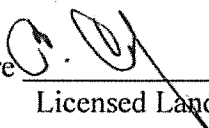
Thence, North, along said West line, 50 feet, to the Point of Beginning.

TOGETHER WITH underlying fee interest, if any, contiguous to the above-described property in and to State Route 245 (Valencia Boulevard).

Containing 350 square feet, more or less, in addition to those portions lying within State Route 245 (Valencia Boulevard).

This real property description has been prepared by me, or under my direction, in conformance with the Professional Land Surveyors Act.

Signature


Licensed Land Surveyor

Date

Aug. 17, 2015



8-17-15

Recording requested by:
Hamner, Jewell & Associates
Government Real Estate Services

When recorded, mail to:

City of Woodlake
Attn: City Clerk
350 N. Valencia Blvd.
Woodlake, CA 93286

APN: 061-181-009

No recording fee per Government Code § 6103
No Documentary Transfer Tax per Revenue and
Taxation Code § 11922

TEMPORARY CONSTRUCTION EASEMENT DEED
(To The City of Woodlake)

For a valuable consideration, receipt of which is hereby acknowledged,

Ricardo Bautista, a single man (hereinafter referred to as "Grantor"),

hereby grants to the City of Woodlake, a Municipal Corporation ("City"), the following described interest in real property located in the City of Woodlake, County of Tulare, State of California:

Temporary Construction Easement

A temporary easement for construction and related purposes, in, on, over, under, along, and across that certain parcel of land described in Exhibit "A," attached hereto and incorporated herein. Said Temporary Construction Easement shall commence thirty (30) days after issuance by City of a Notice of Commencement of Construction, which shall be issued to Grantor by U.S. Mail, and shall automatically terminate upon completion of City's construction of the road project or six (6) months after the commencement of construction, whichever occurs first.

City shall have the right to extend the Temporary Construction Easement term for non-exclusive use in six (6) additional one-month increments if City determines that additional time beyond the 6 month period is necessary for construction completion. In such case, City shall have the unilateral right to extend the Temporary Construction Easement period through construction completion and agrees to compensate Grantor \$15 (Fifteen Dollars) for each one month extension term exercised. Payment for any such extensions shall be paid by City to Grantor concurrent with City's written notice to Grantor of City's intent to exercise such extension provisions. In any event, this Temporary Construction Easement shall terminate on or before May 31, 2017.

At the conclusion of the project construction, City shall generally restore such property to the condition that existed immediately prior to the City's construction to the extent reasonably practical. However, City shall not be required to restore vegetation to the pre-existing condition.

Executed this _____ day of _____, 2015

GRANTOR:

Ricardo Bautista, a single man

By _____
Ricardo Bautista

ACKNOWLEDGMENT

A notary public or other officer completing this certificate verifies only the identity of the individual who signed the document to which this certificate is attached, and not the truthfulness, accuracy, or validity of that document.

State of California

County of _____

On _____ before me, _____, Notary Public, personally appeared Ricardo Bautista, who proved to me on the basis of satisfactory evidence to be the person(s) whose name(s) is/are subscribed to the within instrument and acknowledged to me that he/she/they executed the same in his/her/their authorized capacity(ies), and that by his/her/their signatures(s) on the instrument the person(s), or the entity upon behalf of which the person(s) acted, executed the instrument.

I certify under PENALTY OF PERJURY under the laws of the State of California that the foregoing paragraph is true and correct.

WITNESS my hand and official seal.

Signature _____ (Seal)

CERTIFICATE OF ACCEPTANCE

This is to certify that the City of Woodlake hereby accepts for public purposes the real property, or interest therein, described in that Temporary Construction Easement Deed dated _____, from Ricardo Bautista, a single man, Grantor therein, to the City of Woodlake, grantee therein, and consents to the recordation thereof.

In Witness Whereof, I have hereunto set my hand this _____ day of _____, 2015

CITY OF WOODLAKE

By _____
Ramon Lara
City Administrator

“Exhibit A”

The East 12.00 feet of the West 19.00 feet of that portion of Lot 181 of Woodlake, per map recorded in Volume 10 of Maps, at Page 27, Tulare County Records, situated in the Southwest quarter of the Northwest quarter of Section 31, Township 17 South, Range 27 East, Mount Diablo Base and Meridian, in the City of Woodlake, County of Tulare, State of California, according to the official plat thereof; more particularly described as follows;

Beginning at a point on the West line of said Lot 181, which is 750 feet South of the Northwest corner thereof;

Thence, East, 160 feet;

Thence, South, 50 feet;

Thence, West, 160 feet, to the West line of said Lot 181;

Thence, North, along said West line, 50 feet, to the Point of Beginning.

Containing 600 square feet, more or less



11-12-15

City of Woodlake

AGENDA ITEM IV-F

July 25, 2016

Prepared by Ramon Lara, City Staff

SUBJECT:

Action: Deny Claim for Damages from Sammy Medina Filed on July 19, 2016

BACKGROUND:

A claim can be filed by any person who believes he or she has been injured or damaged by a public entity or a public employee. The person must file a written claim with the public entity, and the entity must reject it before a lawsuit against the entity and/or employee may be filed in court.

DISCUSSION:

The City of Woodlake has received a claim for damages from Sammy Medina. The claim is attached for reference.

RECOMMENDATIONS:

Staff recommends that Council authorize the approval to Deny Claim for Damage from Sammy Medina.

FISCAL IMPACT:

There is no fiscal impact.

ATTACHMENTS:

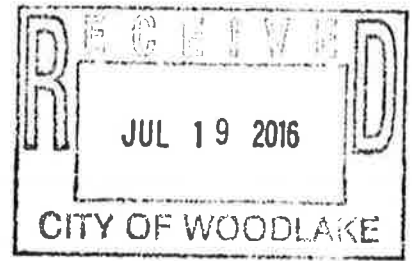
1. Claim Form B dated July 19, 2016

(NAME OF ENTITY)

CLAIM FORM

FORM B

(Please Type Or Print)



CLAIM AGAINST Officer Jeremy McMillan
(Name of Entity)
Claimant's name: Sammy Medina
SSN: [REDACTED] DOB: 6-30-69 Gender: Male M Female
Claimant's address: 384 Creswood apt B, Woodlake CA, 93286
Address where notices about claim are to be sent, if different from above: (same)

Date of incident/accident: 7-17-16
Date injuries, damages, or losses were discovered: 7-17-16
Location of incident/accident: Willow & Sierra
What did entity or employee do to cause this loss, damage, or injury? Broke my phone

(Use back of this form or separate sheet if necessary to answer this question in detail.)

What are the names of the entity's employees who caused this injury, damage, or loss (if known)? Jeremy McMillan

What specific injuries, damages, or losses did claimant receive? Broken phone

(Use back of this form or separate sheet if necessary to answer this question in detail.)

What amount of money is claimant seeking or, if the amount is in excess of \$10,000, which is the appropriate court of jurisdiction. Note: If Superior and Municipal Courts are consolidated, you must represent whether it is a "limited civil case" [see Government Code 910(f)]

\$100.00
How was this amount calculated (please itemize)? Sentimental values

(Use back of this form or separate sheet if necessary to answer this question in detail.)

Date Signed: 7-18-16 Signature: Sammy Medina

If signed by representative:

Representative's Name _____ Address _____

Telephone # _____

Relationship to Claimant _____



City of Woodlake

AGENDA ITEM V-B

July 25, 2016

Prepared by Ramon Lara, City Staff

SUBJECT:

Action: Adoption of Resolution: Approval of the Landscape and Lighting Assessment for Parkwood, Gentle Hills Estates, Olive Estates, Castle Rock Park, Olive Vista and Castle Rock Park Phase II Districts - **PUBLIC HEARING**

BACKGROUND:

At the July 11, 2016 City Council meeting, the City Council approved the City Engineer's report of costs needed to maintain the following assessment districts: Parkwood, Gentle Hills, Olive Estates, Castle Rock Park, Olive Vista and Castle Rock Park Phase II. As part of the Landscape and Lighting Act of 1972, council set July 25, 2016 as the public hearing date for those wishing to comment on each individual assessment district. All assessment district property owners were notified of the public hearing date and location.

DISCUSSION:

The costs have not changed from the previous year. The costs allow for maintenance of grounds and lights plus incidental costs such as administration and engineering.

The costs for each individual property owner are as follows:

Parkwood: \$197.50

Gentle Hill Estates: \$198.40

Olive Estates: \$172.44

Castle Rock Park: \$171.00

Olive Vista: \$200.00

Castle Rock Park Phase II: \$177.50

RECOMMENDATIONS:

That the City Council approves the assessed costs to all assessment district property owners and allow for the continuous maintenance of the above mentioned districts.

FISCAL IMPACT:

The assessed amounts should be sufficient to cover all expenditures by the City of Woodlake and should not affect the general fund.

ATTACHMENTS:

1. Resolutions: Landscape and Lighting Assessment of the Parkwood, Gentle Hills, Olive Estates, Castle Rock Park, Olive Vista and Castle Rock Park Phase II Districts
2. Engineers Reports of the Parkwood, Gentle Hills, Olive Estates, Castle Rock Park, Olive Vista and Castle Rock Park Phase II Districts

BEFORE THE CITY COUNCIL
OF THE CITY OF WOODLAKE
COUNTY OF TULARE
STATE OF CALIFORNIA

In the matter of:

ADOPTION OF ASSESMENT) Resolution No.
FEES FOR THE PARKWOOD)
ASSESMENT DISTRICT FOR)
FISCAL YEAR 2016/2017)

Councilmember _____, offered the following resolution and moved its adoption. Approval of the landscape and lighting assessment for the Parkwood Landscape and Lighting District.

WHEREAS, the City Council of the City of Woodlake, pursuant to the Landscaping and Lighting Act of the 1972, directed the City Engineer to prepare and file an annual report for Fiscal Year 2016/2017 for Assessment District 93-01; and

WHEREAS, the City Engineer filed an annual report and notice of public hearing was given in a time and manner required by law; and

WHEREAS, at the public hearing, the Council afforded to every interested person an opportunity to make a protest to the annual report either in writing or an oral report, and no majority protest either in writing or orally has been made; and

WHEREAS, it appears that the report of the engineer is correct and proper in every respect and the conclusions therein reflected are correct and proper; and

WHEREAS, all charges hereby imposed are in compliance with California Code, without regard to property valuation, in authority (Section 27-subsection 22594, Streets and Highway Code); and

NOW, THEREFORE, BE IT RESOLVED, the City Council hereby confirms the diagram and assessment as set forth in the annual report by the Engineer of Work and hereby levies the assessment set forth therein for Fiscal Year 2016/2017.

The foregoing resolution was adopted upon a motion of Councilmember _____, and seconded by Councilmember _____, and carried by the following vote at the City Council meeting held on July 25, 2016.

AYES:
NOES:
ABSTAIN:
ABSENT:

Rudy Mendoza, Mayor

ATTEST:

Irene Zacarias, City Clerk

BEFORE THE CITY COUNCIL
OF THE CITY OF WOODLAKE
COUNTY OF TULARE
STATE OF CALIFORNIA

In the matter of:

| | | |
|----------------------------|---|----------------|
| ADOPTION OF ASSESMENT |) | Resolution No. |
| FEES FOR THE GENTLE HILLS |) | |
| ESTATES ASSESMENT DISTRICT |) | |
| FOR FISCAL YEAR 2016/2017 |) | |

Councilmember _____, offered the following resolution and moved its adoption. Approval of the landscape and lighting assessment for the Gentle Hills Estates Landscape and Lighting District.

WHEREAS, the City Council of the City of Woodlake, pursuant to the Landscaping and Lighting Act of the 1972, directed the City Engineer to prepare and file an annual report for Fiscal Year 2016/2017 for Assessment District 97-01; and

WHEREAS, the City Engineer filed an annual report and notice of public hearing was given in a time and manner required by law; and

WHEREAS, at the public hearing, the Council afforded to every interested person an opportunity to make a protest to the annual report either in writing or an oral report, and no majority protest either in writing or orally has been made; and

WHEREAS, it appears that the report of the engineer is correct and proper in every respect and the conclusions therein reflected are correct and proper; and

WHEREAS, all charges hereby imposed are in compliance with California Code, without regard to property valuation, in authority (Section 27-subsection 22594, Streets and Highway Code); and

NOW, THEREFORE, BE IT RESOLVED, the City Council hereby confirms the diagram and assessment as set forth in the annual report by the Engineer of Work and hereby levies the assessment set forth therein for Fiscal Year 2016/2017.

The foregoing resolution was adopted upon a motion of Councilmember _____, and seconded by Councilmember _____, and carried by the following vote at the City Council meeting held on July 25, 2016.

AYES:
NOES:
ABSTAIN:
ABSENT:

Attest:

Rudy Mendoza, Mayor

Irene Zacarias, City Clerk

BEFORE THE CITY COUNCIL
OF THE CITY OF WOODLAKE
COUNTY OF TULARE
STATE OF CALIFORNIA

In the matter of:

| | | |
|----------------------------|---|----------------|
| ADOPTION OF ASSESMENT |) | Resolution No. |
| FEES FOR THE OLIVE ESTATES |) | |
| ASSESMENT DISTRICT FOR |) | |
| FISCAL YEAR 2016/2017 |) | |

Councilmember _____, offered the following resolution and moved its adoption. Approval of the landscape and lighting assessment for the Olive Estates Landscape and Lighting District.

WHEREAS, the City Council of the City of Woodlake, pursuant to the Landscaping and Lighting Act of the 1972, directed the City Engineer to prepare and file an annual report for Fiscal Year 2016/2017 for Assessment District 98-01; and

WHEREAS, the Engineer filed an annual report and notice of public hearing was given in a time and manner required by law; and

WHEREAS, at the public hearing, the Council afforded to every interested person an opportunity to make a protest to the annual report either in writing or an oral report, and no majority protest either in writing or orally has been made; and

WHEREAS, it appears that the report of the engineer is correct and proper in every respect and the conclusions therein reflected are correct and proper; and

WHEREAS, all charges hereby imposed are in compliance with California Code, without regard to property valuation, in authority (Section 27-subsection 22594, Streets and Highway Code); and

NOW, THEREFORE, BE IT RESOLVED, the City Council hereby confirms the diagram and assessment as set forth in the annual report by the Engineer of Work and hereby levies the assessment set forth therein for Fiscal Year 2016/2017.

The foregoing resolution was adopted upon a motion of Councilmember _____, and seconded by Councilmember _____, and carried by the following vote at the City Council meeting held on July 25, 2016.

AYES:
NOES:
ABSTAIN:
ABSENT:

Rudy Mendoza, Mayor

ATTEST:

Irene Zacarias, City Clerk

BEFORE THE CITY COUNCIL
OF THE CITY OF WOODLAKE
COUNTY OF TULARE
STATE OF CALIFORNIA

In the matter of:

| | | |
|--------------------------|---|----------------|
| ADOPTION OF ASSESMENT |) | Resolution No. |
| FEES FOR THE CASTLE ROCK |) | |
| ASSESMENT DISTRICT FOR |) | |
| FISCAL YEAR 2016/2017 |) | |

Councilmember _____, offered the following resolution and moved its adoption. Approval of the landscape and lighting assessment for the Castle Rock Landscape and Lighting District.

WHEREAS, the City Council of the City of Woodlake, pursuant to the Landscaping and Lighting Act of the 1972, directed the City Engineer to prepare and file an annual report for Fiscal Year 2016/2017 for Assessment District 00-01; and

WHEREAS, the City Engineer filed an annual report and notice of public hearing was given in a time and manner required by law; and

WHEREAS, at the public hearing the Council afforded to every interested person an opportunity to make a protest to the annual report either in writing or an oral report, and no majority protest either in writing or orally has been made; and

WHEREAS, it appears that the report of the engineer is correct and proper in every respect and the conclusions therein reflected are correct and proper; and

WHEREAS, all charges hereby imposed are in compliance with California Code, without regard to property valuation, in authority (Section 27-subsection 22594, Streets and Highway Code); and

NOW, THEREFORE, BE IT RESOLVED, the City Council hereby confirms the diagram and assessment as set forth in the annual report by the Engineer of Work and hereby levies the assessment set forth therein for Fiscal Year 2016/2017.

The foregoing resolution was adopted upon a motion of Councilmember _____, and seconded by Councilmember _____, and carried by the following vote at the City Council meeting held on July 25, 2016.

AYES:
NOES:
ABSTAIN:
ABSENT:

Rudy Mendoza, Mayor

ATTEST:

Irene Zacarias, City Clerk

BEFORE THE CITY COUNCIL
OF THE CITY OF WOODLAKE
COUNTY OF TULARE
STATE OF CALIFORNIA

In the matter of:

| | | |
|--------------------------|---|----------------|
| ADOPTION OF ASSESMENT |) | Resolution No. |
| FEES FOR THE OLIVE VISTA |) | |
| ASSESMENT DISTRICT FOR |) | |
| FISCAL YEAR 2016/2017 |) | |

Councilmember _____, offered the following resolution and moved its adoption. Approval of the landscape and lighting assessment for the Olive Vista Landscape and Lighting District.

WHEREAS, the City Council of the City of Woodlake, pursuant to the Landscaping and Lighting Act of the 1972, directed the City Engineer to prepare and file an annual report for Fiscal Year 2016/2017 for Assessment District 05-01; and

WHEREAS, the Engineer filed an annual report and notice of public hearing was given in a time and manner required by law; and

WHEREAS, at the public hearing, the Council afforded to every interested person an opportunity to make a protest to the annual report either in writing or an oral report, and no majority protest either in writing or orally has been made; and

WHEREAS, it appears that the report of the engineer is correct and proper in every respect and the conclusions therein reflected are correct and proper; and

WHEREAS, all charges hereby imposed are in compliance with California Code, without regard to property valuation, in authority (Section 27-subsection 22594, Streets and Highway Code); and

NOW, THEREFORE, BE IT RESOLVED, the City Council hereby confirms the diagram and assessment as set forth in the annual report by the Engineer of Work and hereby levies the assessment set forth therein for Fiscal Year 2016/2017.

The foregoing resolution was adopted upon a motion of Councilmember _____, and seconded by Councilmember _____, and carried by the following vote at the City Council meeting held on July 25, 2016.

AYES:
NOES:
ABSTAIN:
ABSENT:

Rudy Mendoza, Mayor

ATTEST:

Irene Zacarias, City Clerk

BEFORE THE CITY COUNCIL
OF THE CITY OF WOODLAKE
COUNTY OF TULARE
STATE OF CALIFORNIA

In the matter of:

| | | |
|-----------------------------|---|----------------|
| ADOPTION OF ASSESMENT |) | Resolution No. |
| FEES FOR THE CASTLE ROCK |) | |
| PHASE II ASSESMENT DISTRICT |) | |
| FOR FISCAL YEAR 2016/2017 |) | |

Councilmember _____, offered the following resolution and moved its adoption. Approval of the landscape and lighting assessment for the Castle Rock Phase II Landscape and Lighting District.

WHEREAS, the City Council of the City of Woodlake, pursuant to the Landscaping and Lighting Act of the 1972, directed the City Engineer to prepare and file an annual report for Fiscal Year 2016/2017 for Assessment District 12-01; and

WHEREAS, the City Engineer filed an annual report and notice of public hearing was given in a time and manner required by law; and

WHEREAS, at the public hearing, the Council afforded to every interested person, an opportunity to make a protest to the annual report either in writing or an oral report, and no majority protest either in writing or orally has been made; and

WHEREAS, it appears that the report of the engineer is correct and proper in every respect and the conclusions therein reflected are correct and proper; and

WHEREAS, all charges hereby imposed are in compliance with California Code, without regard to property valuation, in authority (Section 27-subsection 22594, Streets and Highway Code); and

NOW, THEREFORE, BE IT RESOLVED, the City Council hereby confirms the diagram and assessment as set forth in the annual report by the Engineer of Work and hereby levies the assessment set forth therein for Fiscal Year 2016/2017.

The foregoing resolution was adopted upon a motion of Councilmember _____, and seconded by Councilmember _____, and carried by the following vote at the City Council meeting held on July 25, 2016.

AYES:
NOES:
ABSTAIN:
ABSENT:

Rudy Mendoza, Mayor

ATTEST:

Irene Zacarias, City Clerk

**ENGINEER'S REPORT OF CITY OF WOODLAKE
PARKWOOD
LANDSCAPE AND LIGHTING
ASSESSMENT DISTRICT NO. 93-01
(Pursuant to the Landscaping and Lighting Act of 1972)**

FISCAL YEAR 2016-2017

Monique C. Mello, P.E., City Engineer for the City of Woodlake, Tulare County, California, and Engineer of Work for Assessment District 93-01, makes this report, as directed by the City Council, pursuant to Section 22585 of the Streets and Highways code (Landscaping and Lighting Act of 1972).

The improvements which are the subject of this report are briefly described as follows:

- Maintenance and operation of ponding basin, landscaping, and street lights.

This report consists of five exhibits, as follows:

EXHIBIT A Recording History

EXHIBIT B Recapitalization of Assessments

EXHIBIT C Estimated Assessments

EXHIBIT D Assessment Roll

EXHIBIT E Diagram Showing All Parcels of Real Property within the Assessment District

Respectfully submitted,



Monique C. Mello, P.E., City Engineer



MM/js
#92703A

**ENGINEER'S REPORT OF CITY OF WOODLAKE
LANDSCAPE AND LIGHTING
DISTRICT NO. 93-01
FISCAL YEAR 2016–2017**

**EXHIBIT A
RECORDING HISTORY**

| | |
|-----------------------------------|-----------------|
| INITIAL RECORDING | June 1995 |
| Subdivision included: PARKWOOD | |
| SECOND RECORDING | July 1, 1996 |
| PARKWOOD | |
| THIRD RECORDING | August 16, 1997 |
| PARKWOOD | |
| FOURTH RECORDING | 1998 |
| PARKWOOD | |
| FIFTH RECORDING | August 1999 |
| PARKWOOD | |
| SIXTH RECORDING | July 1, 2000 |
| PARKWOOD | |
| SEVENTH RECORDING | July 2001 |
| PARKWOOD | |
| EIGHTH RECORDING | July 2002 |
| PARKWOOD | |
| NINTH RECORDING | July 2003 |
| PARKWOOD | |

| | |
|-----------------------|-----------|
| TENTH RECORDING | July 2004 |
| PARKWOOD | |
| ELEVENTH RECORDING | July 2005 |
| PARKWOOD | |
| TWELFTH RECORDING | July 2006 |
| PARKWOOD | |
| THIRTEENTH RECORDING | July 2007 |
| PARKWOOD | |
| FOURTEENTH RECORDING | July 2008 |
| PARKWOOD | |
| FIFTEENTH RECORDING | July 2009 |
| PARKWOOD | |
| SIXTEENTH RECORDING | July 2010 |
| PARKWOOD | |
| SEVENTEENTH RECORDING | July 2011 |
| PARKWOOD | |
| EIGHTEENTH RECORDING | July 2012 |
| PARKWOOD | |
| NINETEENTH RECORDING | July 2013 |
| PARKWOOD | |
| TWENTIETH RECORDING | July 2014 |
| PARKWOOD | |

TWENTY-FIRST RECORDING
PARKWOOD

July 2015

**ENGINEER'S REPORT OF CITY OF WOODLAKE
LANDSCAPE AND LIGHTING
DISTRICT NO. 93-01
FISCAL YEAR 2016–2017**

**EXHIBIT B
RECAPITALIZATION OF ASSESSMENTS**

PARKWOOD

ACTUAL COST 2015–2016

| | | |
|----|---|------------|
| 1. | MAINTENANCE COSTS | |
| A. | Contractor (Landscaping) | \$3,500.00 |
| B. | Maintenance of Street Lights | 100.00 |
| C. | Miscellaneous | 0.00 |
| | Subtotal | \$3,600.00 |
| 2. | INCIDENTAL COSTS | |
| A. | Administration | \$444.00 |
| B. | Engineering (Annual Report) | 270.00 |
| C. | County Fees | 31.00 |
| D. | Cost Applied Non Departmental | 0.00 |
| E. | Miscellaneous | 0.00 |
| | Subtotal | \$745.00 |
| | TOTAL COST: | \$4,345.00 |
| | TOTAL ASSESSMENT RECEIVED 2015–2016 | \$4,345.00 |
| | ADJUSTMENT TO 2016–2017 (Deficit to be carried forward) | \$0.00 |

**ENGINEER'S REPORT OF CITY OF WOODLAKE
LANDSCAPING AND LIGHTING
DISTRICT NO. 93-01
FISCAL YEAR 2016-2017**

**EXHIBIT C
ESTIMATED ASSESSMENTS**

PARKWOOD

| | | |
|----|--|-------------------|
| 1. | MAINTENANCE COSTS | |
| A. | Contractor (Landscaping) | \$3,500.00 |
| B. | Electricity for Street Light | 100.00 |
| C. | Special Department Expense | 0.00 |
| | Subtotal | <u>\$3,600.00</u> |
| 2. | INCIDENTAL COSTS | |
| A. | Administration | \$444.00 |
| B. | Engineering (Annual Report) | 270.00 |
| C. | County Fees | 31.00 |
| D. | Costs Applied, Maintenance Shop | 0.00 |
| E. | Costs Applied, Non-Dept. | 0.00 |
| | Subtotal | <u>\$745.00</u> |
| | TOTAL | <u>\$4,345.00</u> |
| 3. | PRIOR YEAR ADJUSTMENT (See Exhibit B) | \$0.00 |
| | DISTRICT ASSESSMENT AMOUNT | <u>\$4,345.00</u> |

Each of the 22 equivalent units will continue to be assessed \$197.50.

**ENGINEER'S REPORT OF CITY OF WOODLAKE
LANDSCAPE AND LIGHTING
DISTRICT NO. 93-01
FISCAL YEAR 2016-2017**

**EXHIBIT D
ASSESSMENT ROLL**

PARKWOOD

| APN NUMBER | \$ AMOUNT | NAME | ASSESSMENT NUMBER | SUBDIV. DESCRIPTION |
|-----------------------|----------------------|---|------------------------------|--------------------------------|
| 061-110-016 | \$197.50 | Hernandez, David & Ana 668 Katelyn Ct. Woodlake, CA 93286 | 01 | Parkwood |
| 061-110-017 | \$197.50 | Salazar, Lidia 664 Katelyn Ct. Woodlake, CA 93286 | 02 | Parkwood |
| 061-110-018 | \$197.50 | Dimas, Mark A. & Azalia, Sally 662 Katelyn Ct. Woodlake, CA 93286 | 03 | Parkwood |
| 061-110-019 | \$197.50 | Martinez, Steven Alexander (SCSR TR) 22358 Ave. 340 Woodlake, CA 93286 | 04 | Parkwood |
| 061-110-020 | \$197.50 | Estrada, Eliazar & Jose L. 659 Katelyn Ct. Woodlake, CA 93286 | 05 | Parkwood |
| 061-110-021 | \$197.50 | Ramirez, Robert B & Amalia B 661 Katelyn Ct. Woodlake, CA 93286 | 06 | Parkwood |
| 061-110-022 | \$197.50 | Martinez, Manuel & Delilah D. 663 Katelyn Ct. Woodlake, CA 93286 | 07 | Parkwood |
| 061-110-023 | \$197.50 | Hernandez, Jose G. 667 Katelyn Ct. Woodlake, CA 93286 | 08 | Parkwood |
| 061-110-024 | \$197.50 | Perez, Perla Jasmine 668 Laurel Ln. Woodlake, CA 93286 | 09 | Parkwood |
| 061-110-025 | \$197.50 | Zumaya, Linda T. 664 Laurel Ln. Woodlake, CA 93286 | 10 | Parkwood |
| 061-110-026 | \$197.50 | Hernandez, Fermin N. & Carolina S. 662 Laurel Ln. Woodlake, CA 93286 | 11 | Parkwood |

| APN NUMBER | \$ AMOUNT | NAME | ASSESSMENT NUMBER | SUBDIV. DESCRIPTION |
|-----------------------|----------------------|---|------------------------------|--------------------------------|
| 061-110-027 | \$197.50 | Rubio, Antulio (TR) (REVOC TR) 660 Laurel Ln. Woodlake, CA 93286 | 12 | Parkwood |
| 061-110-028 | \$197.50 | Rios, Reyna 407 Holly St. Woodlake, CA 93286 | 13 | Parkwood |
| 061-110-029 | \$197.50 | Powell, S. Randall & Deborah F. 3943 Colma Ave. Merced, CA 95348 | 14 | Parkwood |
| 061-110-030 | \$197.50 | Cabrera, Aniceto & Silvia 403 Holly St. Woodlake, CA 93286 | 15 | Parkwood |
| 061-110-031 | \$197.50 | Benavides, Rosario 401 Holly St. Woodlake, CA 93286 | 16 | Parkwood |
| 061-110-032 | \$197.50 | Gonzalez, Alfredo & Maria I. 663 Laurel Ln. Woodlake, CA 93286 | 17 | Parkwood |
| 061-110-033 | \$197.50 | Rodriguez, Jesus L. & Angela I. 667 Laurel Ln. Woodlake, CA 93286 | 18 | Parkwood |
| 061-110-034 | \$197.50 | Lopez, Jacqueline G. 671 Laurel Ln. Woodlake, CA 93286 | 19 | Parkwood |
| 061-110-035 | \$197.50 | Caballero, Silvia 670 E. Whitney Ave. Woodlake, CA 93286 | 20 | Parkwood |
| 061-110-036 | \$197.50 | Luna, Jose & Florinda 668 E. Whitney Ave. Woodlake, CA 93286 | 21 | Parkwood |
| 061-110-037 | \$197.50 | Diaz, Martin & Sara 664 E. Whitney Ave. Woodlake, CA 93286 | 22 | Parkwood |

**ENGINEER'S REPORT OF CITY OF WOODLAKE
LANDSCAPE AND LIGHTING
DISTRICT NO. 93-01
FISCAL YEAR 2016-2017**

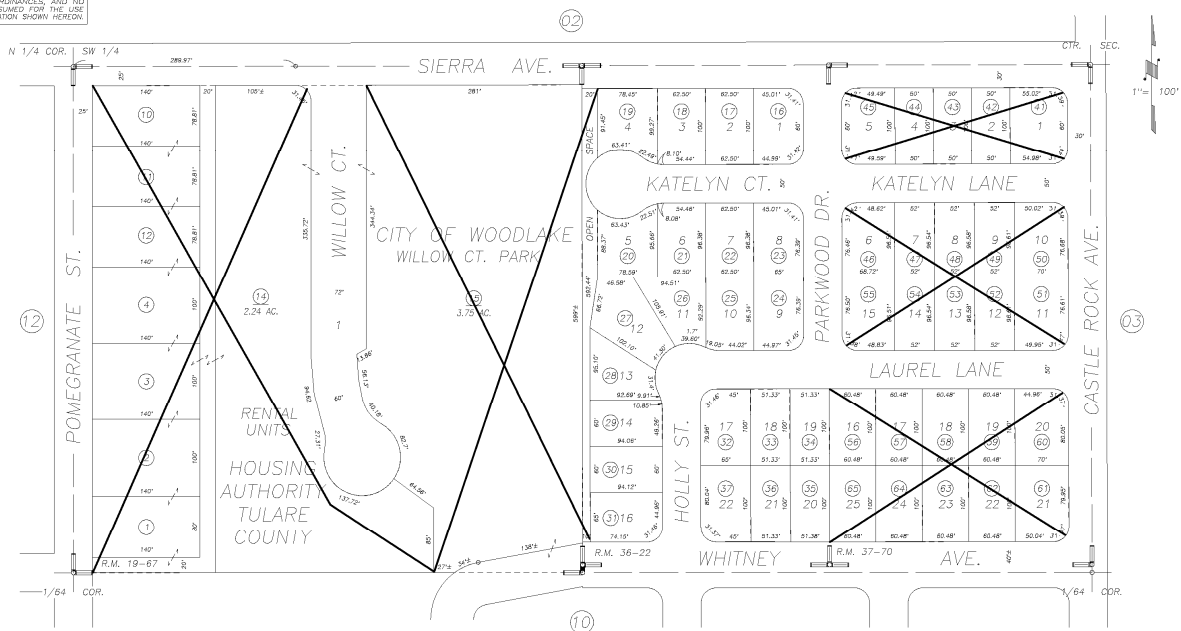
**EXHIBIT E
DIAGRAM SHOWING ALL PARCELS
OF REAL PROPERTY WITHIN
THE ASSESSMENT DISTRICT**

PARKWOOD

DISCLAIMER
THIS MAP WAS PREPARED FOR LOCAL
PROPERTY ASSESSMENT PURPOSES ONLY
AND THE PARCELS SHOWN HEREON MAY
NOT COMPLY WITH STATE AND LOCAL
SUBDIVISION ORDINANCES, AND NO
LIABILITY IS ASSURED FOR THE USE
OF THE INFORMATION SHOWN HEREON.

N 1/2 NE 1/4 OF SW 1/4 SEC. 30, T.17S., R.27E., M.D.B. & M.

Tax Area Code 061-11
007-006



POR. SHUCK ADDITION, R.M. 19-67
PARKWOOD, R.M. 36-22
GENTLE HILLS ESTATES, R.M. 37-70

CITY OF WOODLAKE
ASSESSOR'S MAPS BK.061 , PG.11
COUNTY OF TULARE, CALIFORNIA, U.S.A.

NOTE: Assessor's Parcel Numbers Shown in Circles ① 123 UPDATE WHITNEY AVE 10/20/2008 M.C.
Assessor's Block Numbers Shown in Ellipses ① 123 REVISION DATE TECH

**ENGINEER'S REPORT OF CITY OF WOODLAKE
GENTLE HILLS ESTATES
LANDSCAPE AND LIGHTING
ASSESSMENT DISTRICT NO. 97-01
(Pursuant to the Landscaping and Lighting Act of 1972)**

FISCAL YEAR 2016-2017

Monique C. Mello, P.E., City Engineer for the City of Woodlake, Tulare County, California, and Engineer of Work for Assessment District 97-01, makes this report, as directed by the City Council, pursuant to Section 22585 of the Streets and Highways code (Landscaping and Lighting Act of 1972).

The improvements which are the subject of this report are briefly described as follows:

- Maintenance and operation of ponding basin, landscaping, and street lights.

This report consists of five exhibits, as follows:

EXHIBIT A Recording History


EXHIBIT B Recapitalization of Assessments

EXHIBIT C Estimated Assessments

EXHIBIT D Assessment Roll

EXHIBIT E Diagram Showing All Parcels of Real Property Within the
Assessment District

Respectfully submitted,



Monique C. Mello, P.E., City Engineer



MM/js
#96703A

**ENGINEER'S REPORT OF CITY OF WOODLAKE
LANDSCAPE AND LIGHTING
DISTRICT NO. 97-01
FISCAL YEAR 2016–2017**

**EXHIBIT A
RECORDING HISTORY**

GENTLE HILLS ESTATES

| | |
|-----------------------|--------------|
| INITIAL RECORDING | January 1998 |
| Subdivision included: | |
| GENTLE HILLS ESTATES | |
| SECOND RECORDING | July 1, 1999 |
| GENTLE HILLS ESTATES | |
| THIRD RECORDING | July 1, 2000 |
| GENTLE HILLS ESTATES | |
| FOURTH RECORDING | July 1, 2001 |
| GENTLE HILLS ESTATES | |
| FIFTH RECORDING | July 1, 2002 |
| GENTLE HILLS ESTATES | |
| SIXTH RECORDING | July 2003 |
| GENTLE HILLS ESTATES | |
| SEVENTH RECORDING | July 2004 |
| GENTLE HILLS ESTATES | |
| EIGHTH RECORDING | July 2005 |
| GENTLE HILLS ESTATES | |
| NINTH RECORDING | July 2006 |
| GENTLE HILLS ESTATES | |
| TENTH RECORDING | July 2007 |
| GENTLE HILLS ESTATES | |
| ELEVENTH RECORDING | July 2008 |
| GENTLE HILLS ESTATES | |

| | |
|---|-----------|
| TWELFTH RECORDING GENTLE HILLS ESTATES | July 2009 |
| THIRTEENTH RECORDING GENTLE HILLS ESTATES | July 2010 |
| FOURTEENTH RECORDING GENTLE HILLS ESTATES | July 2011 |
| FIFTEENTH RECORDING GENTLE HILLS ESTATES | July 2012 |
| SIXTEENTH RECORDING GENTLE HILLS ESTATES | July 2013 |
| SEVENTEENTH RECORDING GENTLE HILLS ESTATES | July 2014 |
| EIGHTEENTH RECORDING GENTLE HILLS ESTATES | July 2015 |

**ENGINEER'S REPORT OF CITY OF WOODLAKE
LANDSCAPE AND LIGHTING
DISTRICT NO. 97-01
FISCAL YEAR 2016-2017**

EXHIBIT B

**RECAPITALIZATION OF ASSESSMENTS
GENTLE HILLS ESTATES**

ACTUAL COST 2015-2016

| | | |
|----|---|-------------------|
| 1. | MAINTENANCE COSTS | |
| A. | Contractor (Landscaping) | \$3,150.00 |
| B. | Maintenance of Street Lights | 360.00 |
| C. | Miscellaneous | 500.00 |
| | Subtotal | <u>\$4,010.00</u> |
| 2. | INCIDENTAL COSTS | |
| A. | Administration | \$650.00 |
| B. | Engineering (Annual Report) | 300.00 |
| C. | County Fees | 0.00 |
| D. | Cost Applied Non Departmental | 0.00 |
| E. | Miscellaneous | 0.00 |
| | Subtotal | <u>\$950.00</u> |
| | TOTAL COST: | <u>\$4,960.00</u> |
| | | \$4,960.00 |
| | TOTAL ASSESSMENT RECEIVED 2015-2016 | |
| | ADJUSTMENT TO 2016-2017 (Deficit to be carried forward) | \$0.00 |

**ENGINEER'S REPORT OF CITY OF WOODLAKE
LANDSCAPING AND LIGHTING
DISTRICT NO. 97-01
FISCAL YEAR 2016-2017**

**EXHIBIT C
ESTIMATED ASSESSMENTS**

GENTLE HILLS ESTATES

| | | | |
|----|---------------------------------|----------|-------------------|
| 1. | MAINTENANCE COSTS | | |
| | A. Contractor (Landscaping) | | \$3,150.00 |
| | B. Maintenance of Street Lights | | 360.00 |
| | C. Special Department Expense | | 500.00 |
| | | Subtotal | <u>\$4,010.00</u> |
| 2. | INCIDENTAL COSTS | | |
| | A. Administration | | \$451.60 |
| | B. Engineering (Annual Report) | | 300.00 |
| | C. County Fees | | 0.00 |
| | | Subtotal | <u>\$751.60</u> |
| | | TOTAL | <u>\$4,761.60</u> |
| 3. | PRIOR YEAR ADJUSTMENT | | |
| | (See Exhibit B) | | \$0.00 |
| | DISTRICT ASSESSMENT AMOUNT | | <u>\$4,761.60</u> |

Each of the 24 equivalent units will continue to be assessed \$198.40.

**ENGINEER'S REPORT OF CITY OF WOODLAKE
LANDSCAPE AND LIGHTING
DISTRICT NO. 97-01
FISCAL YEAR 2016-2017**

**EXHIBIT D
ASSESSMENT ROLL**

GENTLE HILLS ESTATES

| APN NUMBER | \$ AMOUNT | NAME | ASSESSMENT NUMBER | SUBDIV. DESCRIPTION |
|-----------------------|----------------------|--|------------------------------|--------------------------------|
| 061-110-041 | \$198.40 | Meza, Robert 684 Katelyn Ln. Woodlake, CA 93286 | 23 | Gentle Hills Estates |
| 061-110-042 | \$198.40 | Tello, Sigifredo Ortiz 682 Katelyn Ln. Woodlake, CA 93286 | 24 | Gentle Hills Estates |
| 061-110-043 | \$198.40 | Cabrera, Javier 678 Katelyn Ln. Woodlake, CA 93286 | 25 | Gentle Hills Estates |
| 061-110-044 | \$198.40 | Lopez, Juan & Elvira N. (TRS FAM TRST) P.O Box 667 Woodlake, CA 93286 | 26 | Gentle Hills Estates |
| 061-110-046 | \$198.40 | Gonzalez, Susana 671 Katelyn Ln. Woodlake, CA 93286 | 28 | Gentle Hills Estates |
| 061-110-047 | \$198.40 | Castillo, Brenda 673 Katelyn Ln. Woodlake, CA 93286 | 29 | Gentle Hills Estates |
| 061-110-048 | \$198.40 | Garzin, Alice I. 677 Katelyn Ln. Woodlake, CA 93286 | 30 | Gentle Hills Estates |
| 061-110-049 | \$198.40 | Munoz, Bobby 681 Katelyn Ln. Woodlake, CA 93286 | 31 | Gentle Hills Estates |
| 061-110-050 | \$198.40 | Cervantes, Martha 683 Katelyn Ln. Woodlake, CA 93286 | 32 | Gentle Hills Estates |
| 061-110-051 | \$198.40 | Flores, Eugenio & Maria D. 686 Laurel Ln. Woodlake, CA 93286 | 33 | Gentle Hills Estates |
| 061-110-052 | \$198.40 | Meza, Gustavo 680 Laurel Ln. Woodlake, CA 93286 | 34 | Gentle Hills Estates |

| APN NUMBER | \$ AMOUNT | NAME | ASSESSMENT NUMBER | SUBDIV. DESCRIPTION |
|-----------------------|----------------------|--|------------------------------|--------------------------------|
| 061-110-053 | \$198.40 | Chavez, Elizabeth S. 676 Laurel Ln. Woodlake, CA 93286 | 35 | Gentle Hills Estates |
| 061-110-054 | \$198.40 | Valenzuela, Josue A. 674 Laurel Ln. Woodlake, CA 93286 | 36 | Gentle Hills Estates |
| 061-110-055 | \$198.40 | Galvan, David M. & Janet 670 Laurel Ln. Woodlake, CA 93286 | 37 | Gentle Hills Estates |
| 061-110-056 | \$198.40 | Herrera, Victor & Illiana 673 Laurel Ln. Woodlake, CA 93286 | 38 | Gentle Hills Estates |
| 061-110-057 | \$198.40 | Varela, Benjamin & Maria 675 Laurel Ln. Woodlake, CA 93286 | 39 | Gentle Hills Estates |
| 061-110-058 | \$198.40 | Gong, Eugene & Minerva M 767 N. Pepper St. Woodlake, CA 93286 | 40 | Gentle Hills Estates |
| 061-110-059 | \$198.40 | Donate, Jesus & Rosalia P. 679 Laurel Ln. Woodlake, CA 93286 | 41 | Gentle Hills Estates |
| 061-110-060 | \$198.40 | Arceo, Racquel 683 Laurel Ln. Woodlake, CA 93286 | 42 | Gentle Hills Estates |
| 061-110-061 | \$198.40 | Salcedo, Juan 684 E. Whitney Ave. Woodlake, CA 93286 | 43 | Gentle Hills Estates |
| 061-110-062 | \$198.40 | Galvan, Jesus M. 680 E. Whitney Ave. Woodlake, CA 93286 | 44 | Gentle Hills Estates |
| 061-110-063 | \$198.40 | Rodriguez, Ricardo & Jessica 678 E. Whitney Ave. Woodlake, CA 93286 | 45 | Gentle Hills Estates |
| 061-110-064 | \$198.40 | Canizalez, Guadalupe & Reyna I. 676 E. Whitney Ave. Woodlake, CA 93286 | 46 | Gentle Hills Estates |
| 061-110-065 | \$198.40 | Silva, Marcelo & San Juana 672 E. Whitney Ave. Woodlake, CA 93286 | 47 | Gentle Hills Estates |

**ENGINEER'S REPORT OF CITY OF WOODLAKE
LANDSCAPE AND LIGHTING
DISTRICT NO. 97-01
FISCAL YEAR 2016-2017**

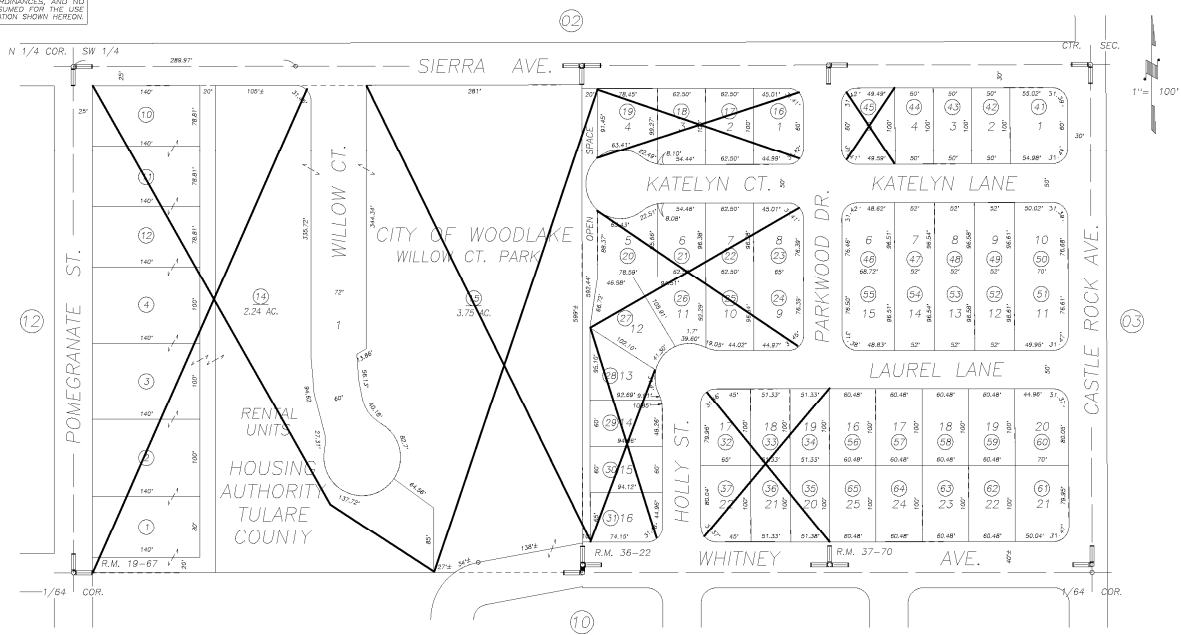
**EXHIBIT E
DIAGRAM SHOWING ALL PARCELS
OF REAL PROPERTY WITHIN
THE ASSESSMENT DISTRICT**

GENTLE HILLS ESTATES

DISCLAIMER
THIS MAP WAS PREPARED FOR LOCAL
PROPERTY ASSESSMENT PURPOSES ONLY
AND THE PARCELS SHOWN HEREON MAY
NOT COMPLY WITH STATE AND LOCAL
SUBDIVISION ORDINANCES, AND NO
LIABILITY IS ASSURED FOR THE USE
OF THE INFORMATION SHOWN HEREON.

N 1/2 NE 1/4 OF SW 1/4 SEC. 30, T.17S., R.27E., M.D.B. & M.

Tax Area Code 061-11
007-006



POR. SHUCK ADDITION, R.M. 19-67
PARKWOOD, R.M. 36-22
GENTLE HILLS ESTATES, R.M. 37-70

CITY OF WOODLAKE
ASSESSOR'S MAPS BK. 061, PG. 11
COUNTY OF TULARE, CALIFORNIA, U.S.A.

NOTE: Assessor's Parcel Numbers Shown in Circles ① 123 UPDATE WHITNEY AVE 10/20/2008 M.C.
Assessor's Block Numbers Shown in Ellipses ① 123 REVISION DATE TECH

**ENGINEER'S REPORT OF CITY OF WOODLAKE
OLIVE ESTATES
LANDSCAPE AND LIGHTING
ASSESSMENT DISTRICT NO. 98-01
(Pursuant to the Landscaping and Lighting Act of 1972)**

FISCAL YEAR 2016–2017

Monique C. Mello, P.E., City Engineer for the City of Woodlake, Tulare County, California, and Engineer of Work for Assessment District 98-01, makes this report, as directed by the City Council, pursuant to Section 22585 of the Streets and Highways code (Landscaping and Lighting Act of 1972).

The improvements which are the subject of this report are briefly described as follows:

- Maintenance and operation of ponding basin, landscaping, and street lights.

This report consists of five exhibits, as follows:

EXHIBIT A Recording History

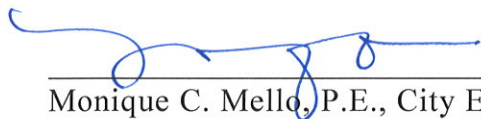
EXHIBIT B Recapitalization of Assessments

EXHIBIT C Estimated Assessments

EXHIBIT D Assessment Roll

EXHIBIT E Diagram Showing All Parcels of Real Property within the
Assessment District

Respectfully Submitted,



Monique C. Mello, P.E., City Engineer



MM/js
#95702A

**ENGINEER'S REPORT OF CITY OF WOODLAKE
LANDSCAPE AND LIGHTING
DISTRICT NO. 98-01
FISCAL YEAR 2016–2017**

**EXHIBIT A
RECORDING HISTORY**

OLIVE ESTATES

| | |
|-------------------|--------------|
| INITIAL RECORDING | June 1998 |
| OLIVE ESTATES | |
| SECOND RECORDING | July 1, 1999 |
| OLIVE ESTATES | |
| THIRD RECORDING | July 1, 2000 |
| OLIVE ESTATES | |
| FOURTH RECORDING | July 1, 2001 |
| OLIVE ESTATES | |
| FIFTH RECORDING | July 1, 2002 |
| OLIVE ESTATES | |
| SIXTH RECORDING | July 2003 |
| OLIVE ESTATES | |
| SEVENTH RECORDING | July 2004 |
| OLIVE ESTATES | |
| EIGHTH RECORDING | July 2005 |
| OLIVE ESTATES | |
| NINTH RECORDING | July 2006 |
| OLIVE ESTATES | |
| TENTH RECORDING | July 2007 |
| OLIVE ESTATES | |

| | |
|-----------------------|-----------|
| ELEVENTH RECORDING | July 2008 |
| OLIVE ESTATES | |
| TWELFTH RECORDING | July 2009 |
| OLIVE ESTATES | |
| THIRTEENTH RECORDING | July 2010 |
| OLIVE ESTATES | |
| FOURTEENTH RECORDING | July 2011 |
| OLIVE ESTATES | |
| FIFTEENTH RECORDING | July 2012 |
| OLIVE ESTATES | |
| SIXTEENTH RECORDING | July 2013 |
| OLIVE ESTATES | |
| SEVENTEENTH RECORDING | July 2014 |
| OLIVE ESTATES | |
| EIGHTEENTH RECORDING | July 2015 |
| OLIVE ESTATES | |

**ENGINEER'S REPORT OF CITY OF WOODLAKE
LANDSCAPE AND LIGHTING
DISTRICT NO. 98-01
FISCAL YEAR 2016–2017**

**EXHIBIT B
RECAPITALIZATION OF ASSESSMENTS**

OLIVE ESTATES

ACTUAL COST 2015–2016

| | | |
|----|---|-------------------|
| 1. | MAINTENANCE COSTS | |
| A. | Contractor (Landscaping) | \$3,950.00 |
| B. | Maintenance of Street Lights | 1,500.00 |
| C. | Slope Maintenance | 1,000.00 |
| D. | Special Department Expense | 577.12 |
| | Subtotal | <u>\$7,027.12</u> |
| 2. | INCIDENTAL COSTS | |
| A. | Administration | \$750.00 |
| B. | Engineering (Annual Report) | 500.00 |
| C. | County Fees | 0.00 |
| D. | Cost Applied Non Departmental | 0.00 |
| | Subtotal | <u>\$1,250.00</u> |
| | TOTAL COST: | <u>\$8,277.12</u> |
| | TOTAL ASSESSMENT RECEIVED 2015–2016 | \$8,277.12 |
| | ADJUSTMENT TO 2016–2017 (Deficit to be carried forward) | \$0.00 |

**ENGINEER'S REPORT OF CITY OF WOODLAKE
LANDSCAPING AND LIGHTING
DISTRICT NO. 98-01
FISCAL YEAR 2016-2017**

**EXHIBIT C
ESTIMATED ASSESSMENTS**

OLIVE ESTATES

| | | |
|----|--|-------------------|
| 1. | MAINTENANCE COSTS | |
| A. | Contractor (Landscaping) | \$3,950.00 |
| B. | Maintenance of Street Light | 1,500.00 |
| C. | Scope Maintenance | 1,000.00 |
| D. | Special Department Expense | 577.12 |
| | Subtotal | <u>\$7,027.12</u> |
| 2. | INCIDENTAL COSTS | |
| A. | Administration | \$750.00 |
| B. | Engineering (Annual Report) | 500.00 |
| C. | County Fees | 0.00 |
| D. | Costs Applied Non-Departmental | 0.00 |
| E. | Miscellaneous | 0.00 |
| | Subtotal | <u>\$1,250.00</u> |
| | TOTAL | <u>\$8,277.12</u> |
| 3. | PRIOR YEAR ADJUSTMENT (See Exhibit B) | \$0.00 |
| | DISTRICT ASSESSMENT AMOUNT | <u>\$8,277.12</u> |

Each of the 48 equivalent units will continue to be assessed \$172.44.

**ENGINEER'S REPORT OF CITY OF WOODLAKE
LANDSCAPE AND LIGHTING
DISTRICT NO. 98-01
FISCAL YEAR 2016-2017**

**EXHIBIT D
ASSESSMENT ROLL**

OLIVE ESTATES

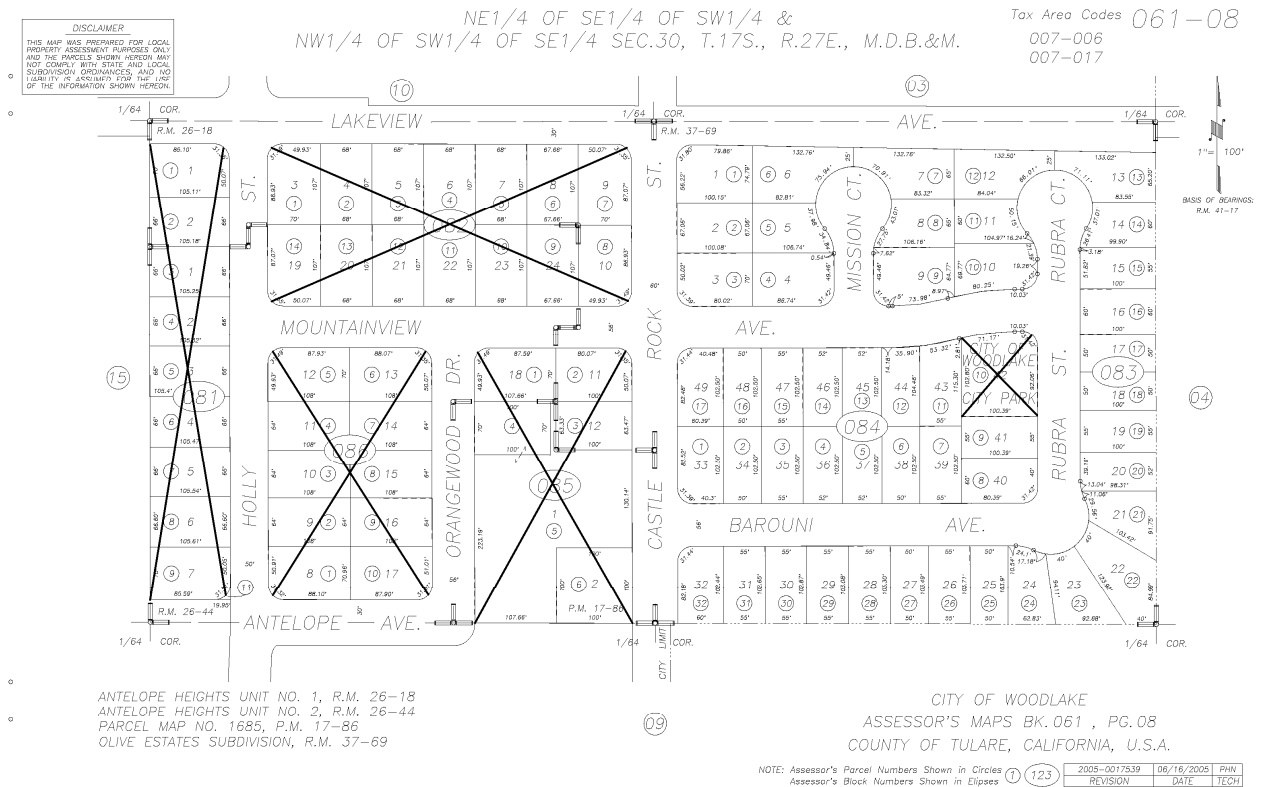
| APN NUMBER | \$ AMOUNT | NAME | ASSESSMENT NUMBER | SUBDIV. DESCRIPTION |
|-----------------------|----------------------|---|------------------------------|--------------------------------|
| 061-083-001 | \$172.44 | Haro, Sergio 290 N. Castle Rock St. Woodlake, CA 93286 | 48 | Olive Estates |
| 061-083-002 | \$172.44 | Martinez, Maria J. 288 N. Castle Rock St. Woodlake, CA 93286 | 49 | Olive Estates |
| 061-083-003 | \$172.44 | Martinez, Domingo & Raquel 720 E. Mountain View Ave. Woodlake, CA 93286 | 50 | Olive Estates |
| 061-083-004 | \$172.44 | Munoz, Abel & Araceli 738 E. Mountain View Ave. Woodlake, CA 93286 | 51 | Olive Estates |
| 061-083-005 | \$172.44 | Garcia, Laura Maria 285 Mission Ct. Woodlake, CA 93286 | 52 | Olive Estates |
| 061-083-006 | \$172.44 | Martinez, Phillip (Estate of) P.O. Box 147 Sultana, CA 93666 | 53 | Olive Estates |
| 061-083-007 | \$172.44 | Andrade, Arturo 292 Mission Ct. Woodlake, CA 93286 | 54 | Olive Estates |
| 061-083-008 | \$172.44 | Almaraz, Salvador & Margarita G. 286 Mission Ct. Woodlake, CA 93286 | 55 | Olive Estates |
| 061-083-009 | \$172.44 | Florez, Veronica 770 E. Mountain View Ave. Woodlake, CA 93286 | 56 | Olive Estates |
| 061-083-010 | \$172.44 | Rubalcava, Carlos & Silvia 790 E. Mountain View Ave. Woodlake, CA 93286 | 57 | Olive Estates |
| 061-083-011 | \$172.44 | Tafolla, Jorge L. 285 Rubra Ct. Woodlake, CA 93286 | 58 | Olive Estates |

| APN NUMBER | \$ AMOUNT | NAME | ASSESSMENT NUMBER | SUBDIV. DESCRIPTION |
|-----------------------|----------------------|---|------------------------------|--------------------------------|
| 061-083-012 | \$172.44 | Sandoval, Juan J. & Ana Maria 676 Redwood St. Woodlake, CA 93286 | 59 | Olive Estates |
| 061-083-013 | \$172.44 | Delgado, Arturo H. 294 Rubra Ct. Woodlake, CA 93286 | 60 | Olive Estates |
| 061-083-014 | \$172.44 | Sanchez, George & Iris A. 286 Rubra Ct. Woodlake, CA 93286 | 61 | Olive Estates |
| 061-083-015 | \$172.44 | Mendoza, Moises & Raquel 282 Rubra St. Woodlake, CA 93286 | 62 | Olive Estates |
| 061-083-016 | \$172.44 | Jimenez, Gaudencio & Esmeralda Aguillera DE 250 Lemona St., SP #7 Woodlake, CA 93286 | 63 | Olive Estates |
| 061-083-017 | \$172.44 | Gamez, Macedonio & Alicia P.O. Box 431 Woodlake, CA 93286 | 64 | Olive Estates |
| 061-083-018 | \$172.44 | Ruvalcaba, Veronica 215 Holly St. Woodlake, CA 93286 | 65 | Olive Estates |
| 061-083-019 | \$172.44 | Gonzalez, Porfirio 298 E. Whitney Ave. Woodlake, CA 93286 | 66 | Olive Estates |
| 061-083-020 | \$172.44 | Rodriguez, Fernando & Estela 252 Rubra St. Woodlake, CA 93286 | 67 | Olive Estates |
| 061-083-021 | \$172.44 | Estrada, Eduardo & Angela 568 N. Palm St. Woodlake, CA 93286 | 68 | Olive Estates |
| 061-083-022 | \$172.44 | Garcia, Jose M. 125 N. Walnut St. Woodlake, CA 93286 | 69 | Olive Estates |
| 061-083-023 | \$172.44 | Ceballos, Javier & Rosa M. 793 Barouni Ave. Woodlake, CA 93286 | 70 | Olive Estates |
| 061-083-024 | \$172.44 | Cazares, Gildardo 1425 S. Central Ave., Apt #16 Visalia, CA 93277 | 71 | Olive Estates |
| 061-083-025 | \$172.44 | Llamas, Joel M. 261 S. Pepper St. Woodlake, CA 93286 | 72 | Olive Estates |
| 061-083-026 | \$172.44 | Reynoso, Damien Noe 783 Barouni Ave. Woodlake, CA 93286 | 73 | Olive Estates |

| APN NUMBER | \$ AMOUNT | NAME | ASSESSMENT NUMBER | SUBDIV. DESCRIPTION |
|-----------------------|----------------------|--|------------------------------|--------------------------------|
| 061-083-027 | \$172.44 | Arreola, Rosa 777 Barouni Ave. Woodlake, CA 93286 | 74 | Olive Estates |
| 061-083-028 | \$172.44 | Valenzuela, Marco A. 343 Forest St. Woodlake, CA 93286 | 75 | Olive Estates |
| 061-083-029 | \$172.44 | Gonzalez, Juan & Rosa 753 Barouni Ave. Woodlake, CA 93286 | 76 | Olive Estates |
| 061-083-030 | \$172.44 | Rubio, Jesus 747 Barouni Ave. Woodlake, CA 93286 | 77 | Olive Estates |
| 061-083-031 | \$172.44 | Valencia, Jose M. & Maria E. P.O. Box 831 Alviso, CA 95002 | 78 | Olive Estates |
| 061-083-032 | \$172.44 | Torrez, Manuel M. & Viatrix 190 Castle Rock St. Woodlake, CA 93286 | 79 | Olive Estates |
| 061-084-001 | \$172.44 | Corona, Ramon 220 Castle Rock St. Woodlake, CA 93286 | 80 | Olive Estates |
| 061-084-002 | \$172.44 | Delgado, Mario A. & Juana 736 Barouni Ave. Woodlake, CA 93286 | 81 | Olive Estates |
| 061-084-003 | \$172.44 | Rodriguez, Alma Rosa Luna De 748 Barouni Ave. Woodlake, CA 93286 | 82 | Olive Estates |
| 061-084-004 | \$172.44 | Martinez, Jorge & Celina 754 Barouni Ave. Woodlake, CA 93286 | 83 | Olive Estates |
| 061-084-005 | \$172.44 | Villegas, Lorenzo Ornellas 762 Barouni Ave. Woodlake, CA 93286 | 84 | Olive Estates |
| 061-084-006 | \$172.44 | Cendejas, Reinaldo & Delia 776 Barouni Ave. Woodlake, CA 93286 | 85 | Olive Estates |
| 061-084-007 | \$172.44 | Montelongo, Felipe 784 Barouni Ave. Woodlake, CA 93286 | 86 | Olive Estates |
| 061-084-008 | \$172.44 | Rodriguez, Miguel O. 798 Barouni Ave. Woodlake, CA 93286 | 87 | Olive Estates |
| 061-084-009 | \$172.44 | Sanchez, Pablin & Maria 347 E. Whitney Ave. Woodlake, CA 93286 | 88 | Olive Estates |
| 061-084-010 | \$0.00 | City of Woodlake 350 N. Valencia Blvd. Woodlake, CA 93286 | 42 | Olive Estates |

| APN NUMBER | \$ AMOUNT | NAME | ASSESSMENT NUMBER | SUBDIV. DESCRIPTION |
|-----------------------|----------------------|---|------------------------------|--------------------------------|
| 061-084-011 | \$172.44 | Chavez, Candelario R. 453 S. Valencia Blvd. Woodlake, CA 93286 | 89 | Olive Estates |
| 061-084-012 | \$172.44 | Abrica, Juan M. 767 E. Mountain View Ave. Woodlake, CA 93286 | 90 | Olive Estates |
| 061-084-013 | \$172.44 | Hernandez, J. Bernadino & Maria L. 755 E. Mountain View Ave. Woodlake, CA 93286 | 91 | Olive Estates |
| 061-084-014 | \$172.44 | Garcia, Francisco C. 741 E. Mountain View Ave. Woodlake, CA 93286 | 92 | Olive Estates |
| 061-084-015 | \$172.44 | Robles, Adolfo Medina Sr. 737 E. Mountain View Ave. Woodlake, CA 93286 | 93 | Olive Estates |
| 061-084-016 | \$172.44 | Rodriguez, Victor 725 E. Mountain View Ave. Woodlake, CA 93286 | 94 | Olive Estates |
| 061-084-017 | \$172.44 | Franco Sr., Salvador & Carmen 260 Castle Rock St. Woodlake, CA 93286 | 95 | Olive Estates |

OLIVE ESTATES



**ENGINEER'S REPORT OF CITY OF WOODLAKE
CASTLE ROCK PARK PHASE 2
LANDSCAPE AND LIGHTING
ASSESSMENT DISTRICT NO. 12-01
(Pursuant to the Landscaping and Lighting Act of 1972)**

FISCAL YEAR 2016–2017

Monique C. Mello, P.E., City Engineer for the City of Woodlake, Tulare County, California, and Engineer of Work for Assessment District No. 12-01, makes this report, as directed by the City Council, pursuant to Section 22585 of the Streets and Highways code (Landscaping and Lighting Act of 1972).

The improvements which are the subject of this report are briefly described as follows:

- Maintenance and operation of ponding basin, landscaping, and street lights.

This report consists of five exhibits, as follows:

EXHIBIT A Recording History

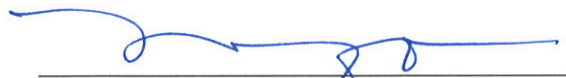
EXHIBIT B Recapitalization of Assessments

EXHIBIT C Estimated Assessments

EXHIBIT D Assessment Roll

EXHIBIT E Diagram Showing All Parcels of Real Property within the Assessment District

Respectfully submitted,



Monique C. Mello, P.E., City Engineer



**ENGINEER'S REPORT OF CITY OF WOODLAKE
LANDSCAPE AND LIGHTING
DISTRICT NO. 12-01
FISCAL YEAR 2016–2017**

**EXHIBIT A
RECORDING HISTORY**

CASTLE ROCK PARK PHASE 2

| | |
|--------------------------|-----------|
| INITIAL RECORDING | July 2012 |
| CASTLE ROCK PARK PHASE 2 | |
| SECOND RECORDING | July 2013 |
| CASTLE ROCK PARK PHASE 2 | |
| THIRD RECORDING | July 2014 |
| CASTLE ROCK PARK PHASE 2 | |
| FOURTH RECORDING | July 2015 |
| CASTLE ROCK PARK PHASE 2 | |

**ENGINEER'S REPORT OF CITY OF WOODLAKE
LANDSCAPE AND LIGHTING
DISTRICT NO. 12-01
FISCAL YEAR 2016–2017**

**EXHIBIT B
RECAPITALIZATION OF ASSESSMENTS**

CASTLE ROCK PARK PHASE 2

ACTUAL COST 2015–2016

| | | |
|----|---|-------------------|
| 1. | MAINTENANCE COSTS | |
| | A. Contractor (Landscaping) | \$3,150.00 |
| | B. Maintenance of Street Lights | 450.00 |
| | C. Miscellaneous | 500.00 |
| | Subtotal | <u>\$4,100.00</u> |
| 2. | INCIDENTAL COSTS | |
| | A. Administration | \$500.00 |
| | B. Engineering (Annual Report) | 300.00 |
| | C. County Fees | 70.00 |
| | D. Cost Applied Non Departmental | 0.00 |
| | Subtotal | <u>\$870.00</u> |
| | TOTAL COST: | <u>\$4,970.00</u> |
| | TOTAL ASSESSMENT RECEIVED 2015–2016 | \$4,970.00 |
| | ADJUSTMENT TO 2016–2017 (Deficit to be carried forward) | \$0.00 |

**ENGINEER'S REPORT OF CITY OF WOODLAKE
LANDSCAPING AND LIGHTING
DISTRICT NO. 12-01
FISCAL YEAR 2016-2017**

**EXHIBIT C
ESTIMATED ASSESSMENTS**

CASTLE ROCK PARK PHASE 2

| | | |
|----|--|-------------------|
| 1. | MAINTENANCE COSTS | |
| A. | Contractor (Landscaping) | \$3,150.00 |
| B. | Electricity for Street Light | 450.00 |
| C. | Special Department Expense | 500.00 |
| | Subtotal | <u>\$4,100.00</u> |
| 2. | INCIDENTAL COSTS | |
| A. | Administration | \$500.00 |
| B. | Engineering (Annual Report) | 300.00 |
| C. | County Fees | 70.00 |
| D. | Costs Applied, Maintenance Shop | 0.00 |
| E. | Costs Applied, Non-Dept. | 0.00 |
| | Subtotal | <u>\$870.00</u> |
| | TOTAL | <u>\$4,970.00</u> |
| 3. | PRIOR YEAR ADJUSTMENT (See Exhibit B) | \$0.00 |
| | DISTRICT ASSESSMENT AMOUNT | <u>\$4,970.00</u> |

Each of the 28 equivalent units will continue to be assessed \$177.50.

**ENGINEER'S REPORT OF CITY OF WOODLAKE
LANDSCAPE AND LIGHTING
DISTRICT NO. 12-01
FISCAL YEAR 2016-2017**

**EXHIBIT D
ASSESSMENT ROLL**

CASTLE ROCK PARK PHASE 2

| APN NUMBER | \$ AMOUNT | NAME | ASSESSMENT NUMBER | SUBDIV. DESCRIPTION |
|-----------------------|----------------------|---|------------------------------|--------------------------------|
| 061-240-043 | \$177.50 | Diaz, Nicholas & Elida 602 E. Sierra Ave. Woodlake, CA 93286 | 158 | Castle Rock Park Phase 2 |
| 061-240-044 | \$177.50 | Rodriguez, Jesus 612 E. Sierra Ave. Woodlake, CA 93286 | 159 | Castle Rock Park Phase 2 |
| 061-240-045 | \$177.50 | Vargas, Brenda 622 E. Sierra Ave. Woodlake, CA 93286 | 160 | Castle Rock Park Phase 2 |
| 061-240-046 | \$177.50 | Ortega, Jose L. Contreras 632 E. Sierra Ave. Woodlake, CA 93286 | 161 | Castle Rock Park Phase 2 |
| 061-240-047 | \$177.50 | Acosta, Fidel A. 642 E. Sierra Ave. Woodlake, CA 93286 | 162 | Castle Rock Park Phase 2 |
| 061-240-048 | \$177.50 | Wiersdorfer, Harold & Sherri 652 E. Sierra Ave. Woodlake, CA 93286 | 163 | Castle Rock Park Phase 2 |
| 061-240-049 | \$177.50 | CRD Construction c/o Robert Deochoa 1648-B W. Tulare Ave. Tulare, CA 93274 | 164 | Castle Rock Park Phase 2 |
| 061-240-050 | \$177.50 | Ramirez, Yuriana 672 E. Sierra Ave. Woodlake, CA 93286 | 165 | Castle Rock Park Phase 2 |
| 061-240-051 | \$177.50 | Mendez, Margarito Jr. 682 E. Sierra Ave. Woodlake, CA 93286 | 166 | Castle Rock Park Phase 2 |
| 061-240-052 | \$177.50 | Ramirez, Jasmine Elisa 692 E. Sierra Ave. Woodlake, CA 93286 | 167 | Castle Rock Park Phase 2 |

| APN NUMBER | \$ AMOUNT | NAME | ASSESSMENT NUMBER | SUBDIV. DESCRIPTION |
|-----------------------|----------------------|--|------------------------------|--------------------------------|
| 061-240-053 | \$177.50 | Gamez, Juan & Amanda 693 Crestwood Ct. Woodlake, CA 93286 | 168 | Castle Rock Park Phase 2 |
| 061-240-054 | \$177.50 | Ortega, Gabriel & Chelisa 683 Crestwood Ct. Woodlake, CA 93286 | 169 | Castle Rock Park Phase 2 |
| 061-240-055 | \$177.50 | Palafox, Alma & Gerardo 673 Crestwood Ct. Woodlake, CA 93286 | 170 | Castle Rock Park Phase 2 |
| 061-240-056 | \$177.50 | Zacarias, Luis Fernando Nunez & Lorena 663 Crestwood Ct. Woodlake, CA 93286 | 171 | Castle Rock Park Phase 2 |
| 061-240-057 | \$177.50 | Antunez, Jorge Luis & Benavides 653 Crestwood Ct. Woodlake, CA 93286 | 172 | Castle Rock Park Phase 2 |
| 061-240-058 | \$177.50 | Esparza, Federico & Martha 643 Crestwood Ct. Woodlake, CA 93286 | 173 | Castle Rock Park Phase 2 |
| 061-240-059 | \$177.50 | Valencia, Michelle 633 Crestwood Ct. Woodlake, CA 93286 | 174 | Castle Rock Park Phase 2 |
| 061-240-060 | \$177.50 | Mendez, Tomas Jr. 632 Crestwood Ct. Woodlake, CA 93286 | 175 | Castle Rock Park Phase 2 |
| 061-240-061 | \$177.50 | Topete, Lazaro Garcia 613 Crestwood Ct. Woodlake, CA 93286 | 176 | Castle Rock Park Phase 2 |
| 061-240-062 | \$177.50 | Lopez, Marco A. 603 Crestwood Ct. Woodlake, CA 93286 | 177 | Castle Rock Park Phase 2 |
| 061-240-063 | \$177.50 | Tejeda, Luis 604 Crestwood Ct. Woodlake, CA 93286 | 178 | Castle Rock Park Phase 2 |
| 061-240-064 | \$177.50 | Espinoza, Jose & Maria Del Carmen 614 Crestwood Ct. Woodlake, CA 93286 | 179 | Castle Rock Park Phase 2 |
| 061-240-065 | \$177.50 | Lopez, Antonio 624 Crestwood Ct. Woodlake, CA 93286 | 180 | Castle Rock Park Phase 2 |

| APN NUMBER | \$ AMOUNT | NAME | ASSESSMENT NUMBER | SUBDIV. DESCRIPTION |
|-----------------------|----------------------|--|------------------------------|--------------------------------|
| 061-240-066 | \$177.50 | Velasquez, Maria Luisa 634 Crestwood Ct. Woodlake, CA 93286 | 181 | Castle Rock Park Phase 2 |
| 061-240-067 | \$177.50 | Villegas, Marisol 644 Crestwood Ct. Woodlake, CA 93286 | 182 | Castle Rock Park Phase 2 |
| 061-240-068 | \$177.50 | Navarro, Ernesto & Maria E. 654 Crestwood Ct. Woodlake, CA 93286 | 183 | Castle Rock Park Phase 2 |
| 061-240-069 | \$177.50 | Matrix Financial Services Corp C/O Flagstar Bank 5151 Corporate Drive Troy, MI 48098-2639 | 184 | Castle Rock Park Phase 2 |
| 061-240-070 | \$177.50 | Galvan, Marina 674 Crestwood Ct. Woodlake, CA 93286 | 185 | Castle Rock Park Phase 2 |

**ENGINEER'S REPORT OF CITY OF WOODLAKE
LANDSCAPE AND LIGHTING
DISTRICT NO. 12-01
FISCAL YEAR 2016-2017**

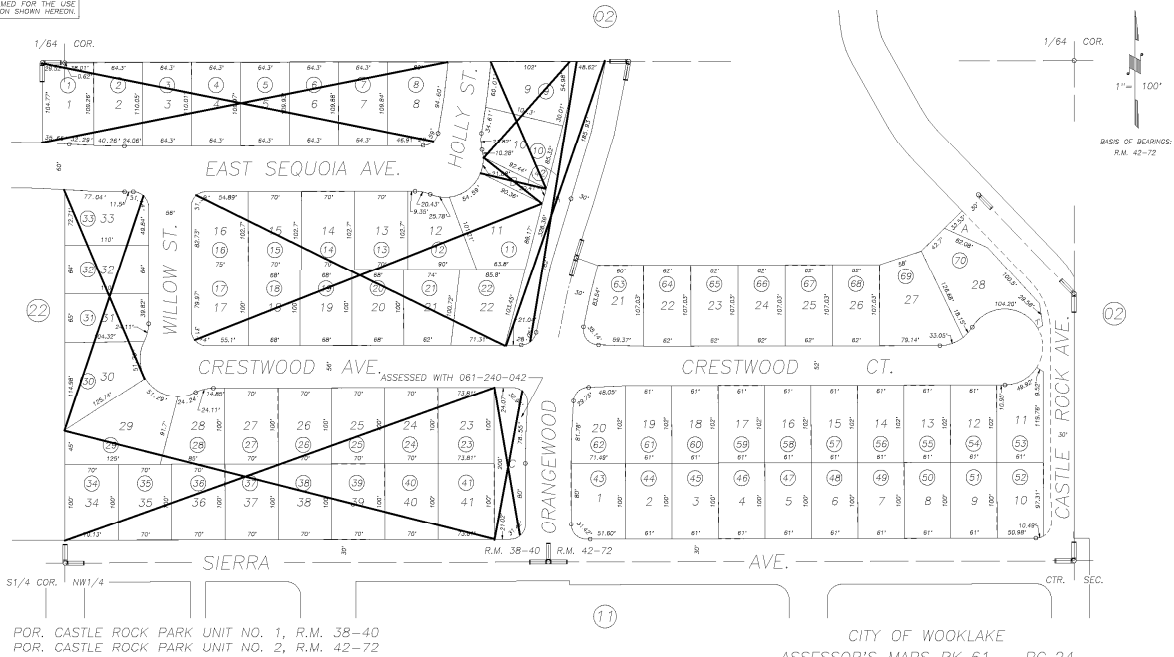
**EXHIBIT E
DIAGRAM SHOWING ALL PARCELS
OF REAL PROPERTY WITHIN
THE ASSESSMENT DISTRICT**

CASTLE ROCK PARK PHASE 2

DISCLAIMER
THIS MAP WAS PREPARED FOR LOCAL
PROPERTY ASSESSMENT PURPOSES ONLY
AND THE PARCELS SHOWN HEREON MAY
NOT COMPLY WITH STATE AND LOCAL
SUBDIVISION ORDINANCES, AND NO
LIABILITY IS ASSUMED FOR THE USE
OF THE INFORMATION SHOWN HEREON.

POR. S 1/2 OF NW 1/4 SECTION 30, T.17S., R.27E., M.D.B. & M.

Tax Area Code 061-24
007-006



NOTE: Assessor's Parcel Numbers Shown in Circles (123)
Assessor's Block Numbers Shown in Ellipses (123)

| | | |
|--------------|------------|------|
| 2007-0071040 | 01/21/2009 | CBT |
| REVISION | DATE | TECH |

**ENGINEER'S REPORT OF CITY OF WOODLAKE
OLIVE VISTA SUBDIVISION
LANDSCAPE AND LIGHTING
ASSESSMENT DISTRICT NO. 05-01
(Pursuant to the Landscaping and Lighting Act of 1972)**

FISCAL YEAR 2016-2017

Monique C. Mello, P.E., City Engineer for the City of Woodlake, Tulare County, California, and Engineer of Work for Assessment District 05-01, makes this report, as directed by the City Council, pursuant to Section 22585 of the Streets and Highways code (Landscaping and Lighting Act of 1972).

The improvements which are the subject of this report are briefly described as follows:

- Maintenance of turf areas, shrubs, trees and irrigation systems, and walls.

This report consists of five exhibits, as follows:

EXHIBIT A Recording History

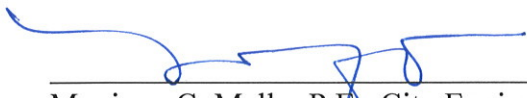
EXHIBIT B Recapitalization of Assessments

EXHIBIT C Estimated Assessments

EXHIBIT D Assessment Roll

EXHIBIT E Diagram Showing All Parcels of Real Property Within the
Assessment District

Respectfully submitted,



Monique C. Mello, P.E., City Engineer

MM/js
#W03006



**ENGINEER'S REPORT OF CITY OF WOODLAKE
LANDSCAPE AND LIGHTING
DISTRICT NO. 05-01
FISCAL YEAR 2016–2017**

**EXHIBIT A
RECORDING HISTORY**

OLIVE VISTA SUBDIVISION

| | |
|--|-----------|
| INITIAL RECORDING | July 2005 |
| Subdivision included: OLIVE VISTA SUBDIVISION | |
| SECOND RECORDING | July 2006 |
| OLIVE VISTA SUBDIVISION | |
| THIRD RECORDING | July 2007 |
| OLIVE VISTA SUBDIVISION | |
| FORTH RECORDING | July 2008 |
| OLIVE VISTA SUBDIVISION | |
| FIFTH RECORDING | July 2009 |
| OLIVE VISTA SUBDIVISION | |
| SIXTH RECORDING | July 2010 |
| OLIVE VISTA SUBDIVISION | |
| SEVENTH RECORDING | July 2011 |
| OLIVE VISTA SUBDIVISION | |
| EIGHTH RECORDING | July 2012 |
| OLIVE VISTA SUBDIVISION | |
| NINTH RECORDING | July 2013 |
| OLIVE VISTA SUBDIVISION | |

TENTH RECORDING

July 2014

OLIVE VISTA SUBDIVISION

ELEVENTH RECORDING

July 2015

OLIVE VISTA SUBDIVISION

**ENGINEER'S REPORT OF CITY OF WOODLAKE
LANDSCAPE AND LIGHTING
DISTRICT NO. 05-01
FISCAL YEAR 2016–2017**

**EXHIBIT B
RECAPITALIZATION OF ASSESSMENTS**

OLIVE VISTA SUBDIVISION

ACTUAL COST 2015–2016

| | | |
|----|---|-------------------|
| 1. | MAINTENANCE COSTS | |
| A. | Contractor (Landscaping) | \$2,600.00 |
| B. | Maintenance of Street Lights | 300.00 |
| C. | Miscellaneous | 0.00 |
| | Subtotal | <u>\$2,900.00</u> |
| 2. | INCIDENTAL COSTS | |
| A. | Administration | \$800.00 |
| B. | Engineering (Annual Report) | 270.00 |
| C. | County Fees | 30.00 |
| D. | Cost Applied Non-Departmental | 0.00 |
| E. | Miscellaneous | 200.00 |
| | Subtotal | <u>\$1,300.00</u> |
| | TOTAL COST: | <u>\$4,200.00</u> |
| | TOTAL ASSESSMENT RECEIVED 2015–2016 | \$4,200.00 |
| | ADJUSTMENT TO 2016–2017 (Deficit to be carried forward) | \$0.00 |

**ENGINEER'S REPORT OF CITY OF WOODLAKE
LANDSCAPING AND LIGHTING
DISTRICT NO. 05-01
FISCAL YEAR 2016-2017**

**EXHIBIT C
ESTIMATED ASSESSMENTS
OLIVE VISTA SUBDIVISION**

| | | |
|----|----------------------------------|-------------------|
| 1. | MAINTENANCE COSTS | |
| | A. Contractor (Landscaping) | \$2,600.00 |
| | B. Maintenance of Street Lights | 300.00 |
| | C. Capital | 0.00 |
| | Subtotal | <u>\$2,900.00</u> |
| 2. | INCIDENTAL COSTS | |
| | A. Administration | \$800.00 |
| | B. Engineering (Annual Report) | 270.00 |
| | C. County Fees | 30.00 |
| | D. Cost applied non-departmental | 0.00 |
| | E. Miscellaneous | 200.00 |
| | Subtotal | <u>\$1,300.00</u> |
| 3. | PRIOR YEAR ADJUSTMENT | \$0.00 |
| | (See Exhibit B) | |
| | DISTRICT ASSESSMENT AMOUNT | <u>\$4,200.00</u> |

Each of the 21 equivalent units will continue to be assessed \$200.00.

**ENGINEER'S REPORT OF CITY OF WOODLAKE
LANDSCAPE AND LIGHTING
DISTRICT NO. 05-01
FISCAL YEAR 2016-2017**

**EXHIBIT D
ASSESSMENT ROLL**

OLIVE VISTA SUBDIVISION

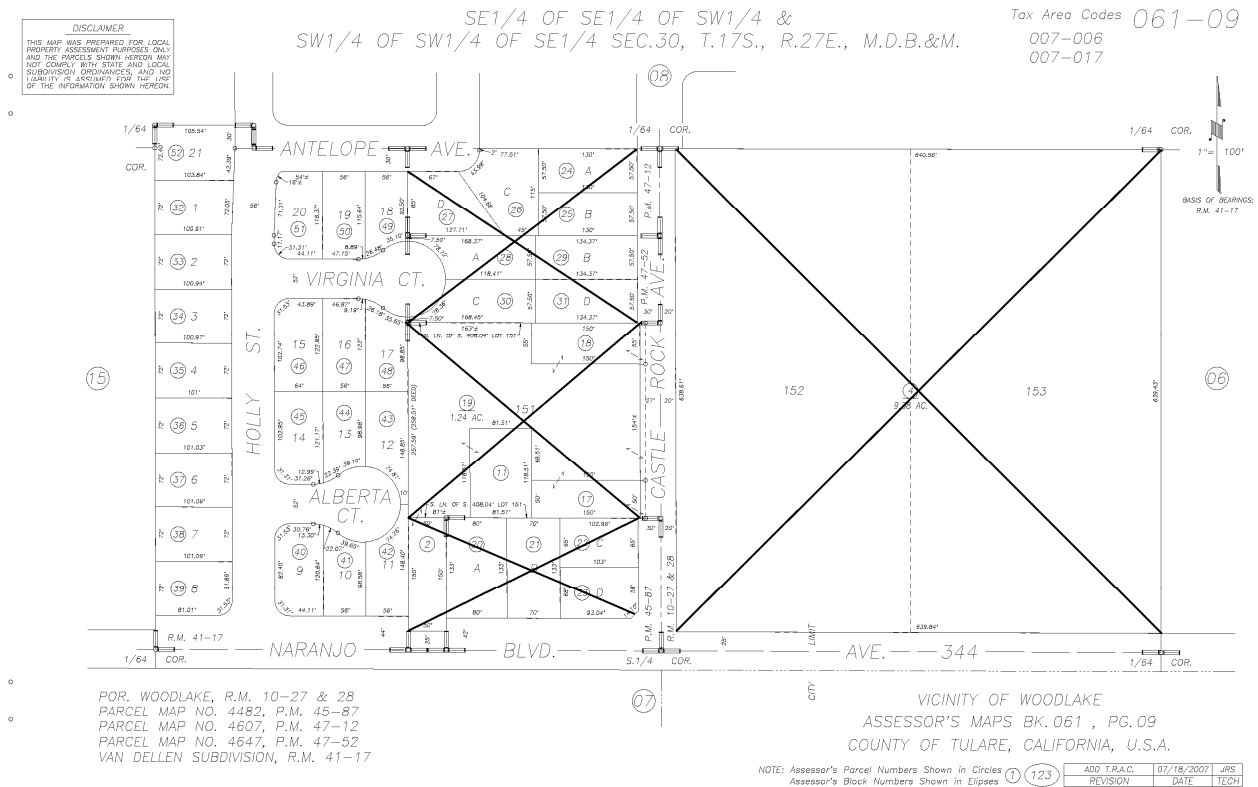
| APN NUMBER | \$ AMOUNT | NAME | ASSESSMENT NUMBER | SUBDIV. DESCRIPTION |
|-----------------------|----------------------|---|------------------------------|--------------------------------|
| 061-090-032 | \$200.00 | Lupian, Elvia 199 N. Holly St. Woodlake, CA 93286 | 137 | Olive Vista |
| 061-090-033 | \$200.00 | Ledesma, Sergio 185 N. Holly St. Woodlake, CA 93286 | 138 | Olive Vista |
| 061-090-034 | \$200.00 | Cuevas, Elizabeth 171 N. Holly St. Woodlake, CA 93286 | 139 | Olive Vista |
| 061-090-035 | \$200.00 | Guzman, Saul Ramirez 157 N. Holly St. Woodlake, CA 93286 | 140 | Olive Vista |
| 061-090-036 | \$200.00 | Aguilar, Mario 143 N. Holly St. Woodlake, CA 93286 | 141 | Olive Vista |
| 061-090-037 | \$200.00 | Piedad, Reynaldo 129 N. Holly St. Woodlake, CA 93286 | 142 | Olive Vista |
| 061-090-038 | \$200.00 | Perez, Ramon 115 N. Holly St. Woodlake, CA 93286 | 143 | Olive Vista |
| 061-090-039 | \$200.00 | Mora, Yolanda 101 N. Holly St. Woodlake, CA 93286 | 144 | Olive Vista |
| 061-090-040 | \$200.00 | Ortega, Emmanuel 110 N. Holly St. Woodlake, CA 93286 | 145 | Olive Vista |
| 061-090-041 | \$200.00 | Rodriguez, Antonio L & Alicia M. 637 Alberta Ct. Woodlake, CA 93286 | 146 | Olive Vista |
| 061-090-042 | \$200.00 | Ledesma, Anna 651 Alberta Ct. Woodlake, CA 93286 | 147 | Olive Vista |
| 061-090-043 | \$200.00 | Marquez, Alejandro & Cynthia 654 Alberta Ct. Woodlake, CA 93286 | 148 | Olive Vista |

| APN NUMBER | \$ AMOUNT | NAME | ASSESSMENT NUMBER | SUBDIV. DESCRIPTION |
|-----------------------|----------------------|--|------------------------------|--------------------------------|
| 061-090-044 | \$200.00 | Aguilar, Richard 632 Alberta Ct. Woodlake, CA 93286 | 149 | Olive Vista |
| 061-090-045 | \$200.00 | Mariscal, Crisol 171 E. Antelope Woodlake, CA 93286 | 150 | Olive Vista |
| 061-090-046 | \$200.00 | Vega, Juan Manuel Sosa 154 N. Holly St. Woodlake, CA 93286 | 151 | Olive Vista |
| 061-090-047 | \$200.00 | Hagen, Jerome H. 631 Virginia Ct. Woodlake, CA 93286 | 152 | Olive Vista |
| 061-090-048 | \$200.00 | Hernandez, Luz Elena Rico De & Miguel 653 Virginia Ct. Woodlake, CA 93286 | 153 | Olive Vista |
| 061-090-049 | \$200.00 | Shaver, Cindy L. 656 Virginia Ct. Woodlake, CA 93286 | 154 | Olive Vista |
| 061-090-050 | \$200.00 | Hernandez, Artemio 634 Virginia Ct. Woodlake, CA 93286 | 155 | Olive Vista |
| 061-090-051 | \$200.00 | Rodriguez, Saul & Gloria 192 N. Holly St. Woodlake, CA 93286 | 156 | Olive Vista |
| 061-090-052 | \$200.00 | Acosta, Ana C. 213 N. Holly St. Woodlake, CA 93286 | 157 | Olive Vista |

**ENGINEER'S REPORT OF CITY OF WOODLAKE
LANDSCAPE AND LIGHTING
DISTRICT NO. 05-01
FISCAL YEAR 2016-2017**

**EXHIBIT E
DIAGRAM SHOWING ALL PARCELS
OF REAL PROPERTY WITHIN
THE ASSESSMENT DISTRICT

OLIVE VISTA SUBDIVISION**



City of Woodlake

AGENDA ITEM V-C

July 25, 2016

Prepared by Greg Collins, City Staff

SUBJECT:

Action: Adoption of Resolution: Approval of Variance 2016-01, Bredd Inc.

BACKGROUND:

The applicant, Bredd Inc., has applied for a variance from the lot width standard of the RM-3 (multi-family residential, one unit per 1,500 square feet) district. The Planning Commission held a public hearing on this matter. The staff presented a staff report to the Commission and outlined the findings that were necessary to approve this variance.

DISCUSSION:

The applicant, Bredd Inc., has applied for a variance from the lot width standard of the RM-3 (multi-family residential, one unit per 1,500 square feet) district. The lot width standard for this district is 50 feet. The applicant is requesting a lot width of 35 feet. This will permit the applicant to construct a single family dwelling on a proposed lot that would have the dimensions of 35 feet by 135 feet (**Note:** The applicant also requested a parcel map on the subject property to divide a lot measuring 70 feet by 300 feet into four lots, each measuring 35 feet by 135 feet).

The Planning Commission held a public hearing on this matter. Nobody appeared before the Commission to either speak for or against said variance. The staff presented a staff report to the Commission and outlined the findings that were necessary to approve this variance. After considering the information provided by staff, the Commission voted to approve Variance 2016-01 subject to conditions listed above.

The Woodlake General Plan, Housing Element, supports this type of variance because it promotes residential infill as well as the construction of affordable housing. The necessary findings for approving a variance from the RM-3 lot width standard are listed and discussed below:

1. There are exceptional or extraordinary circumstances or conditions applicable to the property or the intended use that do not apply generally to the other property in the same vicinity and zone. A lot that is 300 feet deep is a unique condition for a residential infill lot that is located within the core of Woodlake. To make the lot more marketable it makes sense to divide the parcel into lots that are only 150 deep. It is difficult for a homeowner to maintain a lot that is 300 feet deep. Further, by approving a variance from the lot width standard of the RM-3 district this will allow Woodlake to implement various policies in its Housing Element that refer to promoting residential infill and construction of affordable single family homes.

2. The requested variance is necessary for the preservation and enjoyment of a substantial property right possessed by other property owners in the same vicinity and zone. Under current zoning the property owner would be permitted to construct seven apartments on the site. The developer under this variance is only requesting four single-family dwellings. Essentially, the property owner is foregoing the construction of a 7-unit apartment complex for four single-family dwellings.

3. The granting of this variance will not be materially detrimental to the public welfare or injurious to the property or improvements in the vicinity and zone. Four single-family dwellings will not have a detrimental impact on the immediate neighborhood or the community at large especially when compared to a 7-unit apartment complex, which would be permitted under the RM-3 district.

4. The strict literal interpretation and enforcement of the zoning requirement will result in an unnecessary hardship on the applicant. Compliance with the lot width standard of the RM-3 district (50 feet) will limit the developer to constructing only two single-family dwellings on the subject site. Further, if limited to two lots the lot area would be 10,500 square feet. Under the RM-3 district, the minimum lot area is 5,000 square feet. If the applicant was permitted to divide the property into four lots (35 feet by 150 feet), each lot area would still exceed the minimum lot area standard of 5,000 square feet.

RECOMMENDATIONS:

That the Woodlake City Council uphold the Planning Commission's recommendation on Variance 2016-01 and approve resolution subject to the following conditions:

1. The applicant shall submit a plot plan and elevation drawing for each home to be constructed on the subject lots.
2. The applicant shall submit to the City for review and approval a landscaping and irrigation plan for each lot to be created. These improvements shall be installed prior to occupancy.
3. All development impact fees, including school impact fees, shall be paid prior to occupancy.

FISCAL IMPACT:

There is no fiscal impact.

ATTACHMENTS:

1. Resolution: Adoption of Resolution: Approval of Variance 2016-01, Bredd Inc.
2. Four Lot Plot Plan

BEFORE THE CITY COUNCIL
OF THE CITY OF WOODLAKE
COUNTY OF TULARE
STATE OF CALIFORNIA

In the matter of:

ADOPTION OF A RESOLUTION)
APPROVING VARIANCE 2016-01,))
BREDD INC.)

Resolution No.

Councilmember _____, offered the following resolution and moved its adoption.
Approval of a resolution approving of Variance 2016-01, Bredd Inc.

WHEREAS, Bredd Inc., P.O. Box 1003, Pico Rivera, Ca. 90660, is requesting a variance from the lot width standard of the RM-3 (multi-family residential, one unit per 1,500 square feet), district, 17.18.08 Development Standards (also illustrated in Exhibit 1), B. Lot Frontage, Depth and Area of the Woodlake Zoning Ordinance, and

WHEREAS, the subject property is located on the north side of Lakeview Avenue between Pomegranite and Holly Street in Woodlake, and

WHEREAS, the applicant wishes divide a 70-foot by 300-foot lot that is zoned to the RM-3 district into four lots each measuring 35 feet by 150 feet, and

WHEREAS, the Zoning Ordinance requires that lots that are zoned to the RM-3 district have a minimum lot width of 50 feet, and

WHEREAS, the project involves the creation of lots that will have a lot width of 35 feet, and

WHEREAS, the applicant has applied for a variance from the lot width standard consistent with Chapter 17.50 of the Woodlake Zoning Ordinance, and

WHEREAS, persons within 300 feet of the subject site were notified of the meeting and a public hearing notice was published ten (10) days prior to the Planning Commission's meeting of June 22, 2016, and

WHEREAS, the Planning Department has prepared a staff report and declared the proposed project categorically exempt under CEQA, and

WHEREAS, the Planning Commission held a public hearing on this variance request, accepted testimony and voted to recommend approval of said variance to the Woodlake City Council.

NOW, THEREFORE, BE IT RESOLVED that the City Council, after considering all the evidence presented, determined the following findings were relevant in evaluating this amendment:

1. The variance is categorically exempt under CEQA.
2. There are exceptional or extraordinary circumstances or conditions applicable to the property or the intended use that do not apply generally to the other property in the same vicinity and zone.
3. The requested variance is necessary for the preservation and enjoyment of a substantial property right possessed by other property owners in the same vicinity and zone.
4. The granting of this variance will not be materially detrimental to the public welfare or injurious to the property or improvements in the vicinity and zone.
5. The strict literal interpretation and enforcement of the zoning requirement will result in an unnecessary hardship on the applicant.
6. This variance will serve to implement many of the goals and policies in Woodlake's Housing Element.

BE IT FURTHER RESOLVED that the City Council hereby upholds the recommendation of the Planning Commission and approves Variance 16-01 subject to the following conditions.

1. The applicant shall submit a plot plan and elevation drawing for each home to be constructed on the subject lots.
2. The applicant shall submit to the City for review and approval a landscaping and irrigation plan for each lot to be created. These improvements shall be installed prior to occupancy.
3. All development impact fees, including school impact fees, shall be paid prior to occupancy.

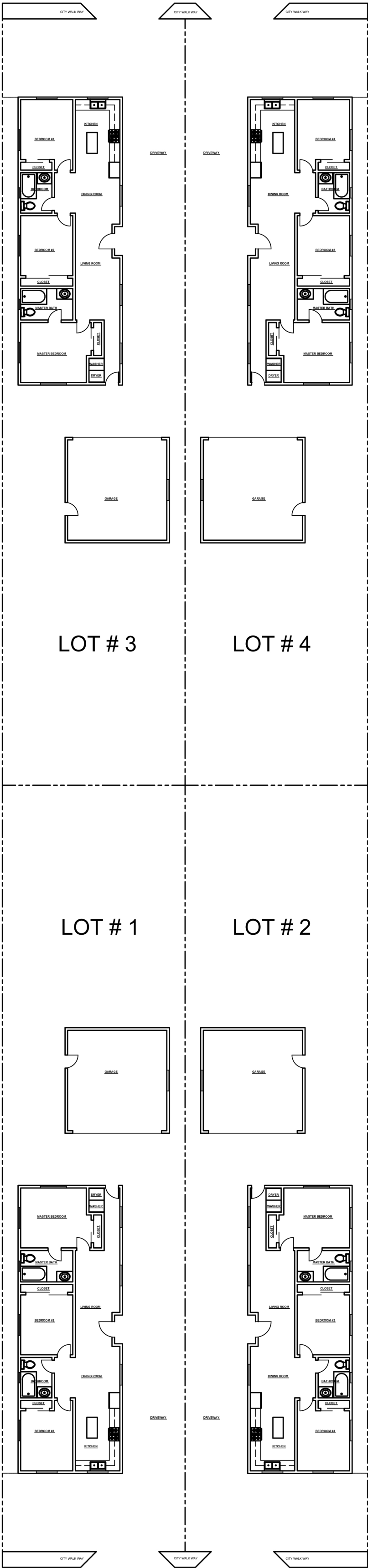
The foregoing resolution was adopted upon a motion of Council member _____, second by Council member _____ at a regular meeting of the Woodlake City Council on the 25th day of July, 2016, by the following roll call vote:

AYES:
NOES:
ABSTAIN:
ABSENT:

Rudy Mendoza, Mayor

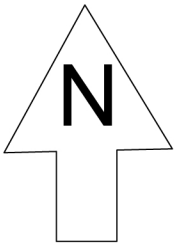
Irene Zacarias, City Clerk

DANIELLE WAY



E LAKEVIEW AVE

PLOT PLAN
SCALE: 3/16" = 1'-0"



City of Woodlake

AGENDA ITEM V-D

July 25, 2016

Prepared by Irene Zacarias, City Staff

SUBJECT:

Information: Nomination of a City of Woodlake Resident to Serve on the Measure R Citizens' Oversight Committee

BACKGROUND:

In November 2006, the voters of Tulare County approved Measure R. Measure R is a ½ cent sales tax that addresses the major regional, local and transit/bike/environmental transportation needs in Tulare County. The implementation of the Measure began in 2007 and will continue through the year 2037. Measure R is administered by the Tulare County Association of Governments (TCAG).

DISCUSSION:

The Measure's bylaws called for the establishment of a Citizens' Oversight Committee. The purpose and duty of the committee is to inform the public, provide input on implementation of the Measure R Expenditure Plan, to advise the TCAG Board if and when the plan needs to be augmented, and to ensure that the funds are being spent in accordance with the plan.

The City of Woodlake was previously represented on the Measure R Citizens' Oversight Committee by Ms. Lucy Cardenas. Her term expired on June 30, 2016 and she is eligible for another two year term. Ms. Cardenas has expressed interest in continuing to serve as the City of Woodlake representative on the Citizens' Oversight Committee. The term will run from July 1, 2016 to June 30, 2018.

City Staff has published the vacancy in the Foothill Sun Gazette. The deadline to complete an application for consideration is August 12. Council can then review applications and appoint a representative at the August 22, 2016 council meeting.

RECOMMENDATIONS:

No staff recommendation.

FISCAL IMPACT:

There is no fiscal impact.

ATTACHMENTS:

1. None